

RECEIVED

SEP 29 2009

DISTRICT I  
1625 N. FRENCH DR., HOBBES, NM 88240

State of New Mexico  
Energy, Minerals and Natural Resources Department

HOBBES OGD

Form C-102  
Revised October 12, 2005  
Submit to Appropriate District Office  
State Lease - 4 Copies  
Fee Lease - 3 Copies

DISTRICT II  
1301 W. GRAND AVENUE, ARTESIA, NM 88210

OIL CONSERVATION DIVISION  
1220 SOUTH ST. FRANCIS DR.  
Santa Fe, New Mexico 87505

DISTRICT III  
1000 Rio Brazos Rd., Aztec, NM 87410

DISTRICT IV  
1220 S. ST. FRANCIS DR., SANTA FE, NM 87505

WELL LOCATION AND ACREAGE DEDICATION PLAT

AMENDED REPORT

API Number 30-025-38833	Pool Code 44500	Pool Name Maljamar;Yeso, West
Property Code 302519	Property Name MC FEDERAL	Well Number 26
OGRID No. 229137	Operator Name COG OPERATING, LLC	Elevation 4050'

Surface Location

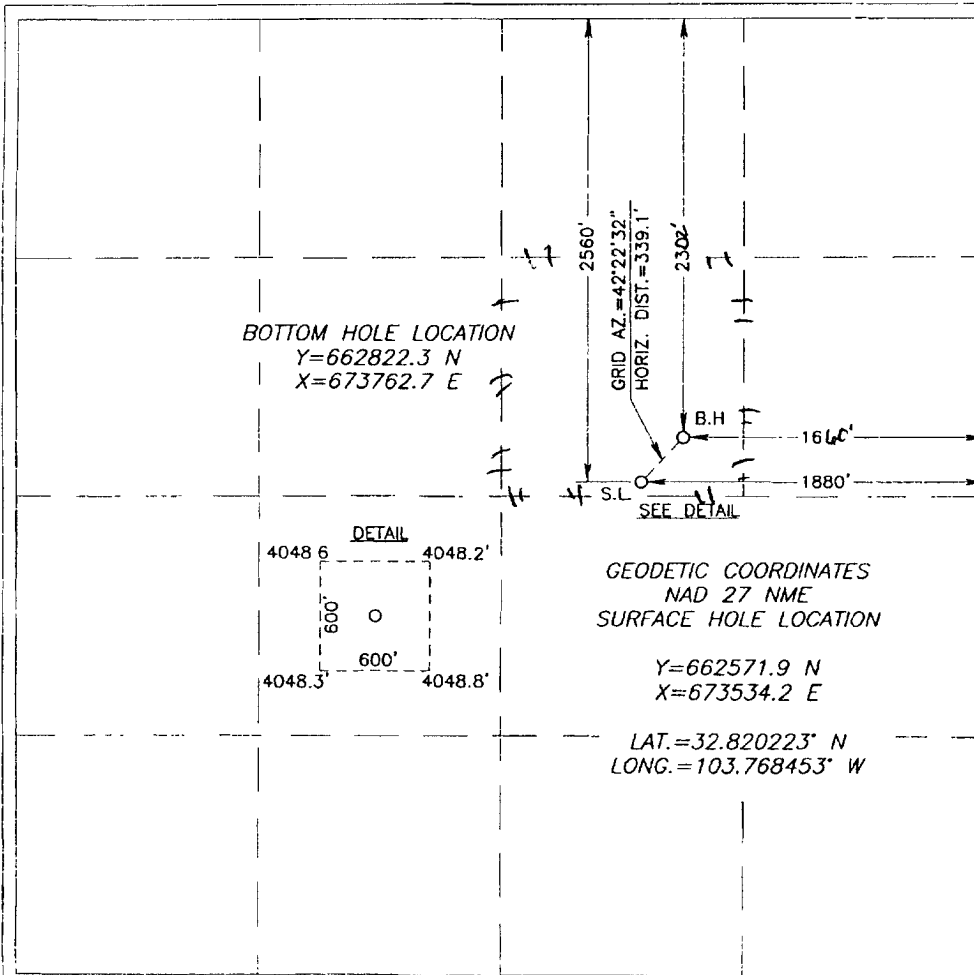
UL or lot No.	Section	Township	Range	Lot Idn	Feet from the	North/South line	Feet from the	East/West line	County
G	21	17-S	32-E		2560	NORTH	1880	EAST	LEA

Bottom Hole Location If Different From Surface

UL or lot No.	Section	Township	Range	Lot Idn	Feet from the	North/South line	Feet from the	East/West line	County
G	21	17-S	32-E		2302.4	NORTH	1668.6	EAST	LEA

Dedicated Acres 40	Joint or Infill	Consolidation Code	Order No.
-----------------------	-----------------	--------------------	-----------

NO ALLOWABLE WILL BE ASSIGNED TO THIS COMPLETION UNTIL ALL INTERESTS HAVE BEEN CONSOLIDATED OR A NON-STANDARD UNIT HAS BEEN APPROVED BY THE DIVISION



**OPERATOR CERTIFICATION**

I hereby certify that the information herein is true and complete to the best of my knowledge and belief, and that this organization either owns a working interest or unleased mineral interest in the land including the proposed bottom hole location or has a right to drill this well at this location pursuant to a contract with an owner of such mineral or working interest, or to a voluntary pooling agreement or a compulsory pooling order heretofore entered by the division.

Signature: Kanicia Carrillo Date: 09/11/09

Printed Name: Kanicia Carrillo

---

**SURVEYOR CERTIFICATION**

I hereby certify that the well location shown on this plat was plotted from field notes of actual surveys made by me or under my supervision, and that the same is true and correct to the best of my belief.

Date Surveyed: JANUARY 2, 2008

Signature & Seal of Professional Surveyor: Ronald J. Eidson

Certificate No. CARY G. EIDSON 12641  
RONALD J. EIDSON 3239

RECEIVED

SEP 29 2009

DISTRICT I  
1225 N. FRENCH DR., HOBBS, NM 88240

State of New Mexico  
Energy, Minerals and Natural Resources Department

HOBBSOCD

Form C-102

DISTRICT II  
1301 W. GRAND AVENUE, ARTESIA, NM 88210

OIL CONSERVATION DIVISION

Revised October 12, 2005  
Submit to Appropriate District Office

1220 SOUTH ST. FRANCIS DR.  
Santa Fe, New Mexico 87505

State Lease - 4 Copies  
Fee Lease - 3 Copies

DISTRICT III  
1000 Rio Brazos Rd., Aztec, NM 87410

DISTRICT IV  
1220 S. ST. FRANCIS DR., SANTA FE, NM 87505

WELL LOCATION AND ACREAGE DEDICATION PLAT

AMENDED REPORT

API Number 30-025-38833	Pool Code 44500	Pool Name Maljamar; Yeso West
Property Code 302519	Property Name MC FEDERAL	Well Number 26
OGRID No. 229137	Operator Name COG OPERATING, LLC	Elevation 4050'

Surface Location

UL or lot No.	Section	Township	Range	Lot Idn	Feet from the	North/South line	Feet from the	East/West line	County
G	21	17-S	32-E		2560	NORTH	1880	EAST	LEA

Bottom Hole Location If Different From Surface

UL or lot No.	Section	Township	Range	Lot Idn	Feet from the	North/South line	Feet from the	East/West line	County
G	21	17-S	32-E			NORTH		EAST	LEA

Dedicated Acres 40	Joint or Infill	Consolidation Code	Order No.
-----------------------	-----------------	--------------------	-----------

NO ALLOWABLE WILL BE ASSIGNED TO THIS COMPLETION UNTIL ALL INTERESTS HAVE BEEN CONSOLIDATED OR A NON-STANDARD UNIT HAS BEEN APPROVED BY THE DIVISION

**BOTTOM HOLE LOCATION**  
Y=662822.3 N  
X=673762.7 E

GRID AZ = 42°22'32"  
HORIZ. DIST. = 339.1'

2560'  
2300'

B.H.  
166'

S.L.  
1880'

SEE DETAIL

**GEODETIC COORDINATES**  
NAD 27 NME  
SURFACE HOLE LOCATION

Y=662571.9 N  
X=673534.2 E

LAT. = 32.820223° N  
LONG. = 103.768453° W

**DETAIL**

4048.6' 4048.2'  
600' 600'  
4048.3' 4048.8'

**OPERATOR CERTIFICATION**

I hereby certify that the information herein is true and complete to the best of my knowledge and belief, and that this organization either owns a working interest or unleased mineral interest in the land including the proposed bottom hole location or has a right to drill this well at this location pursuant to a contract with an owner of such mineral or working interest, or to a voluntary pooling agreement or a compulsory pooling order heretofore entered by the division.

*K.C.*  
Signature \_\_\_\_\_ Date \_\_\_\_\_

Printed Name \_\_\_\_\_

---

**SURVEYOR CERTIFICATION**

I hereby certify that the well location shown on this plat was plotted from field notes of actual surveys made by me or under my supervision, and that the same is true and correct to the best of my belief.

JANUARY 2, 2009  
Date Surveyed \_\_\_\_\_ DSS

Signature & Seal of Professional Surveyor  
*Ronald J. Eidson*

07 11 16 18

Certificate No. GARY G. EIDSON 12641  
RONALD J. EIDSON 3239