

DISTRICT I

1825 N. FRENCH DR., HOHOB, NM 88240

DISTRICT II

1301 W. GRAND AVENUE, ARTESHA, NM 88210

DISTRICT III

1000 Rio Brazos Rd., Aztec, NM 87410

DISTRICT IV

1220 S. ST. FRANCIS DR., SANTA FE, NM 87505

State of New Mexico

Energy, Minerals and Natural Resources Department

OIL CONSERVATION DIVISION
1220 SOUTH ST. FRANCIS DR.
Santa Fe, New Mexico 87505

Form C-102

Revised JUNE 10, 2003

Submit to Appropriate District Office

State Lease - 4 Copies

Fee Lease - 3 Copies

WELL LOCATION AND ACREAGE DEDICATION PLAT

☐ AMENDED REPORT

| | | |
|----------------------------|-------------------------------------|--|
| API Number 30-025-37668 | Pool Code 24170 | Pool Name Eunice; San Andres, South |
| Property Code 34816 | Property Name NEW MEXICO STATE S | Well Number 50 |
| OGRID No. 00873 | Operator Name APACHE CORPORATION | Elevation 3370' |

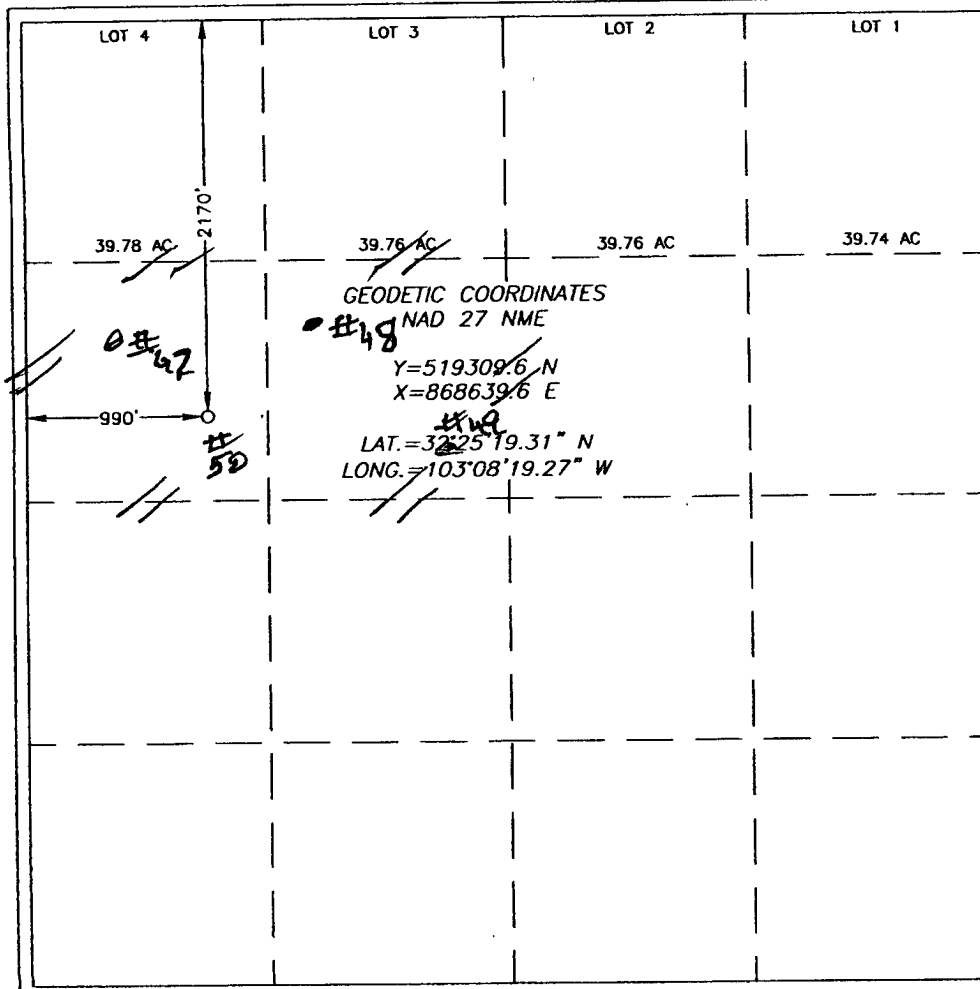
Surface Location

| UL or lot No. | Section | Township | Range | Lot Idn | Feet from the | North/South line | Feet from the | East/West line | County |
|---------------|---------|----------|-------|---------|---------------|------------------|---------------|----------------|--------|
| E | 2 | 22-S | 37-E | | 2170 | NORTH | 990 | WEST | LEA |

Bottom Hole Location If Different From Surface

| UL or lot No. | Section | Township | Range | Lot Idn | Feet from the | North/South line | Feet from the | East/West line | County |
|--------------------------|-----------------|--------------------|-----------|---------|---------------|------------------|---------------|----------------|--------|
| | | | | | | | | | |
| Dedicated Acres 40 80 | Joint or Infill | Consolidation Code | Order No. | | | | | | |

NO ALLOWABLE WILL BE ASSIGNED TO THIS COMPLETION UNTIL ALL INTERESTS HAVE BEEN CONSOLIDATED
OR A NON-STANDARD UNIT HAS BEEN APPROVED BY THE DIVISION



OPERATOR CERTIFICATION

I hereby certify that the information
contained herein is true and complete to the
best of my knowledge and belief.

Elaine Linton
Signature

Elaine Linton

Printed Name

Engineering Tech.

Title

4/24/2006

Date

SURVEYOR CERTIFICATION

I hereby certify that the well location shown
on this plat was plotted from field notes of
actual surveys made by me or under my
supervision and that the same is true and
correct to the best of my belief.

OCTOBER 4, 2005

Date Surveyed

Ronald J. Eidson
Signature & Seal of
Professional Surveyor

Professional Surveyor

2339

05.11.1555

Certificate

RONALD J. EIDSON

3239