



## WELL DATA SHEET

LEASE: Opal "28" Federal Com

WELL: # 1

FIELD: Hat Mesa

LOC: 1650' FSL & 660' FEL

SEC: 28 TOWN: 20S R: 33E

SURVEY: \_\_\_\_\_

STATUS: \_\_\_\_\_

CO: Lea

API NO: 30-025-34004

TD: 14387'

ST: NM

LEASE # \_\_\_\_\_

PBTD: 11430'

COTD: \_\_\_\_\_

1/21/2010

Spud Date: 6-19-1997

Comp. Date: 8-12-1997

GL: 3623'

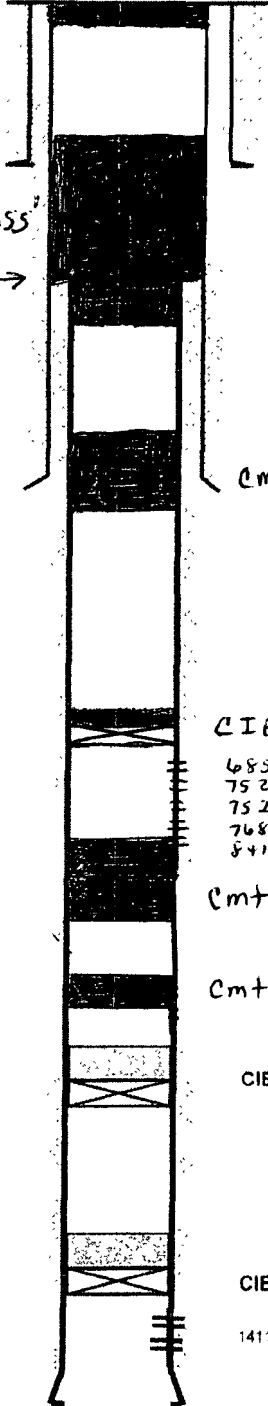
DF: \_\_\_\_\_

KB: \_\_\_\_\_

*60' surf plug*

*cmt plug 3442-1055'*

*5 1/2" csg cut @ 3000'* →



Csg Detail:

Hole Size: 17-1/2"

13-3/8" OD, 54.5 #/ft, grade \_\_\_\_\_

csg set @ 1350' w/ 1500 sx.

Circ? Yes TOC @ \_\_\_\_\_ Surf By \_\_\_\_\_ Circ \_\_\_\_\_

Hole Size: 12-1/2"

9-5/8" OD, 40 #/ft, grade \_\_\_\_\_

csg set @ 5232' w/ 1810 sx.

Circ? \_\_\_\_\_ TOC @ \_\_\_\_\_ By \_\_\_\_\_

Hole Size: 8-3/4"

5-1/2" OD, 20 #/ft, grade \_\_\_\_\_

csg set @ 14387' w/ 2225 sx.

in \_\_\_\_\_ stages w/DV tool @ \_\_\_\_\_

Stage 1 circ? \_\_\_\_\_ TOC \_\_\_\_\_ By \_\_\_\_\_

Stage 2 circ? \_\_\_\_\_ TOC \_\_\_\_\_ By \_\_\_\_\_

*cmt plug 5293-4924'*

*CIBP set @ 6800' w/ 35' cmt on top*

*6858-76'  
7524-28'  
7529-33'  
7684-88'  
8410-48'*

*cmt plug 8550-8063'*

*cmt plug 9091-8864'*

*CIBP @ 11430' w/ 35' cmt top*

*CIBP @ 13865' w/ 35' cmt top*

*14118-26'*

TD = 14387'