

District I  
1625 N. French Dr., Hobbs, NM 88240  
District II  
1301 W. Grand Avenue, Artesia, NM 88210  
District III  
1000 Rio Brazos Rd., Aztec, NM 87410  
District IV  
1220 S. St. Francis Dr., Santa Fe, NM 87505

RECEIVED  
MAR 08 2010  
HOBBS, NM

State of New Mexico  
Energy, Minerals & Natural Resources Department  
OIL CONSERVATION DIVISION  
1220 South St. Francis Dr.  
Santa Fe, NM 87505

Form C-102  
Revised October 12, 2005  
Submit to Appropriate District Office  
State Lease- 4 Copies  
Fee Lease- 3 Copies

AMENDED REPORT

WELL LOCATION AND ACREAGE DEDICATION PLAT

API Number <b>30-025-39704</b>	Pool Code <b>51020</b>	Pool Name <b>Red Hills; Bone Spring</b>
Property Code <b>37858</b>	Property Name <b>LOMAS ROJAS "26" STATE COM</b>	Well Number <b>5H</b>
OGRID No. <b>7377</b>	Operator Name <b>EOG RESOURCES, INC.</b>	Elevation <b>3338.1'</b>

Surface Location

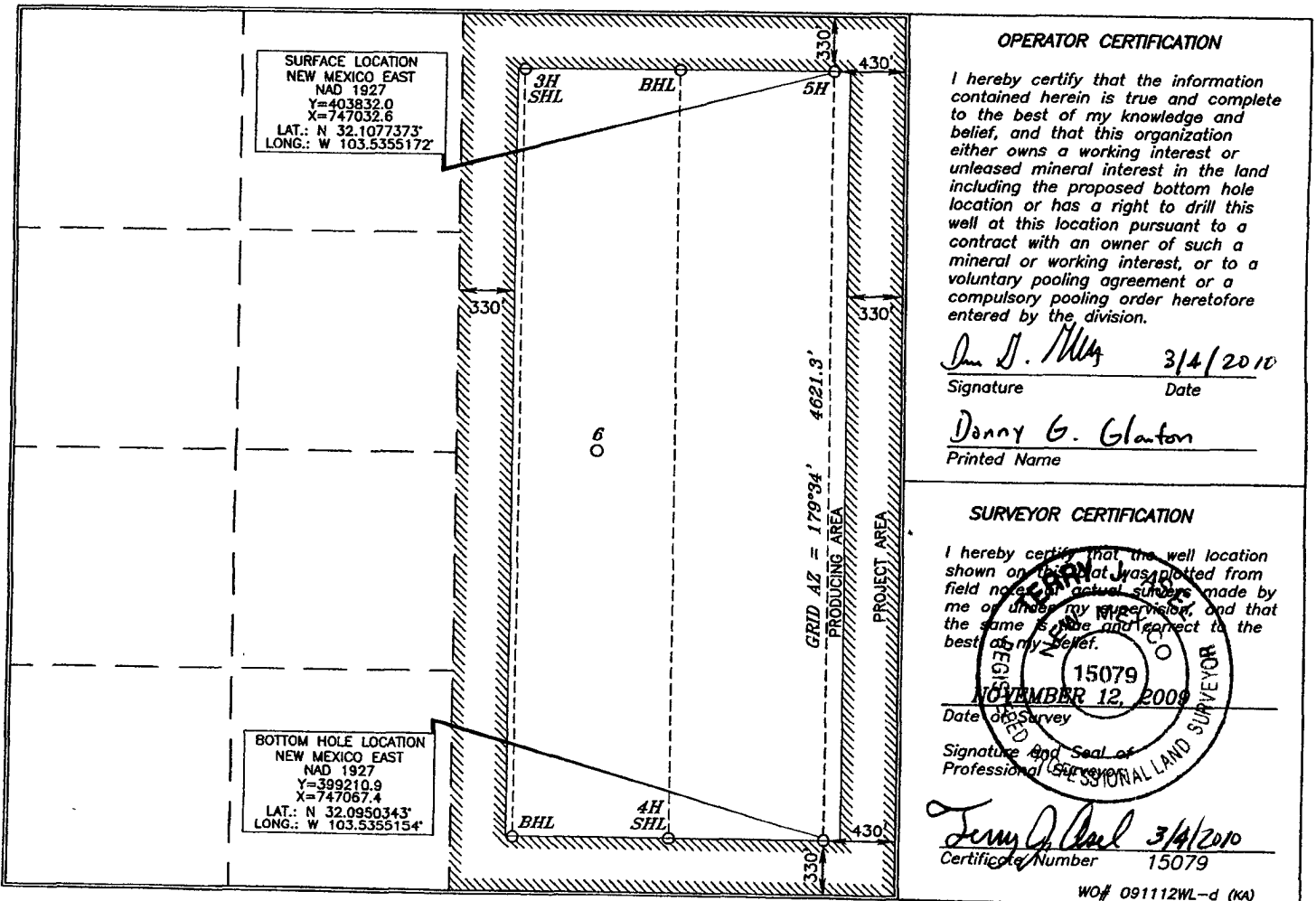
UL or lot no.	Section	Township	Range	Lot Idn	Feet from the	North/South line	Feet from the	East/West line	County
<b>A</b>	<b>26</b>	<b>25 SOUTH</b>	<b>33 EAST, N.M.P.M.</b>		<b>330'</b>	<b>NORTH</b>	<b>430'</b>	<b>EAST</b>	<b>LEA</b>

Bottom Hole Location If Different From Surface

UL or lot no.	Section	Township	Range	Lot Idn	Feet from the	North/South line	Feet from the	East/West line	County
<b>P</b>	<b>26</b>	<b>25 SOUTH</b>	<b>33 EAST, N.M.P.M.</b>		<b>330'</b>	<b>SOUTH</b>	<b>430'</b>	<b>EAST</b>	<b>LEA</b>

Dedicated Acres <b>320</b>	Joint or Infill	Consolidation Code	Order No.
-------------------------------	-----------------	--------------------	-----------

No allowable will be assigned to this completion until all interests have been consolidated or a non-standard unit has been approved by the division.



**Permit Information:**

Well Name: Lomas Rojas 26 State Com No. 5H

**Location:**

SL: 330' FNL &amp; 430' FEL, Section 26, T-25-S, R-33-E, Lea Co., N.M.

BHL: 330' FSL &amp; 430' FEL, Section 26, T-25-S, R-33-E, Lea Co., N.M.

**Casing Program:**

Casing	Setting Depth	Hole Size	Casing Size	Casing Weight	Casing Grade	Desired TOC
Surface	650'	17-1/2"	13-3/8"	48#	H-40	Surface
Intermediate	4,000'	12-1/4"	9-5/8"	40#	J-55	Surface
	5,100'	12-1/4"	9-5/8"	40#	HCK-55	
Production	13,887'	8-3/4"	5-1/2"	17#	HCP-110	4600'

**Cement Program:**

Depth	No. Sacks	Wt. lb/gal	Yld Ft <sup>3</sup> /ft	Slurry Description
650'	675	14.8	1.32	Class C + 0.005 pps Static Free + 2% CaCl <sub>2</sub> + 0.25 pps CelloFlake + 0.005 gps FP-6L
5,100'	1100	12.7	2.01	Lead: Class 'C' + 2.00% SMS + 1.50% R-3 + 0.25 lb/sk Cello Flake + 0.005 lb/sk Static Free
	200	14.8	1.32	Tail: Class 'C' + 0.25 lb/sk Cello Flake + 0.005 lb/sk Static Free
11,000	105	18.0	0.90	210' Btm Hole Plug - Class 'H' + 1.20% CD-31 + 0.20% R-3 + 5.00% Salt (1.252 lb/sk)
9,400'	300	18.0	0.90	600' Sidetrack Plug - Class 'H' + 1.20% CD-31 + 0.20% R-3 + 5.00% Salt (1.252 lb/sk)
13,887'	975	11.8	2.37	Lead: 50:50:10 Class 'H' + 0.80% FL-52A + 0.30% ASA-301 + 0.30% SMS + 2.00% Salt (2.259 lb/sk) + 0.20% R-21 + 0.25 lb/sk Cello Flake
	1100	14.2	1.30	Tail: 50:50:2 Class 'H' + 0.30% FL-52A + 0.20% CD-32 + 0.35% SMS + 5.00% Salt (2.454 lb/sk) + 0.45% R-3 + 0.005 lb/sk Static Free

**Mud Program:**

Depth	Type	Weight (ppg)	Viscosity	Water Loss
0 - 650'	Fresh - Gel	8.6-8.8	28-34	N/c
650' - 5,100'	Brine	10.0-10.2	28-34	N/c
5,100' - 8,500'	Fresh Water	8.4-8.6	28-34	N/c
8,500' - 11,000' Pilot hole	Cut Brine - XCD	9.0-9.5	40-42	8-10
9,000' - 13,887' Lateral	Cut Brine - XCD	9.0-9.5	40-42	8-10

Lomas Rojas State Com #5H  
Red Hills  
Lea County, New Mexico

330' FNL  
430' FEL  
Section 26  
T-25-S, R-33-E

Proposed Wellbore

KB: 3,368.1'  
GL: 3,338.1'

API: 30-025-

