

RECEIVED

State of New Mexico

DISTRICT I
1625 N. FRENCH DR., HOBBS, NM 88240

Energy, Minerals and Natural Resources Department

SEP 03 2010

Form C-102

DISTRICT II
1301 W. GRAND AVENUE, ARTESIA, NM 88210

CONSERVATION DIVISION
1220 SOUTH ST. FRANCIS DR.
Santa Fe, New Mexico 87505

Revised October 12, 2005
Submit to Appropriate District Office
State Lease - 4 Copies
Fee Lease - 3 Copies

DISTRICT III
1000 Rio Brazos Rd., Aztec, NM 87410

DISTRICT IV
1220 S. ST. FRANCIS DR., SANTA FE, NM 87505

WELL LOCATION AND ACREAGE DEDICATION PLAT

AMENDED REPORT

API Number 30-025-39635	Pool Code 63780 ; 47090 ; 63840 ; 96764	Pool Name weir; Blinebry - weir; Drinkard Monument; Tubb - Monument; ABO, SE-
Property Code 306601	Property Name HANSEN STATE	Well Number 14
OGRID No. 873	Operator Name APACHE CORPORATION	Elevation 3541'

Surface Location

UL or lot No.	Section	Township	Range	Lot Idn	Feet from the	North/South line	Feet from the	East/West line	County
B	16	20-S	37-E		910	NORTH	2310	EAST	LEA

Bottom Hole Location If Different From Surface

UL or lot No.	Section	Township	Range	Lot Idn	Feet from the	North/South line	Feet from the	East/West line	County
Dedicated Acres 40		Joint or Infill	Consolidation Code		Order No				

NO ALLOWABLE WILL BE ASSIGNED TO THIS COMPLETION UNTIL ALL INTERESTS HAVE BEEN CONSOLIDATED OR A NON-STANDARD UNIT HAS BEEN APPROVED BY THE DIVISION

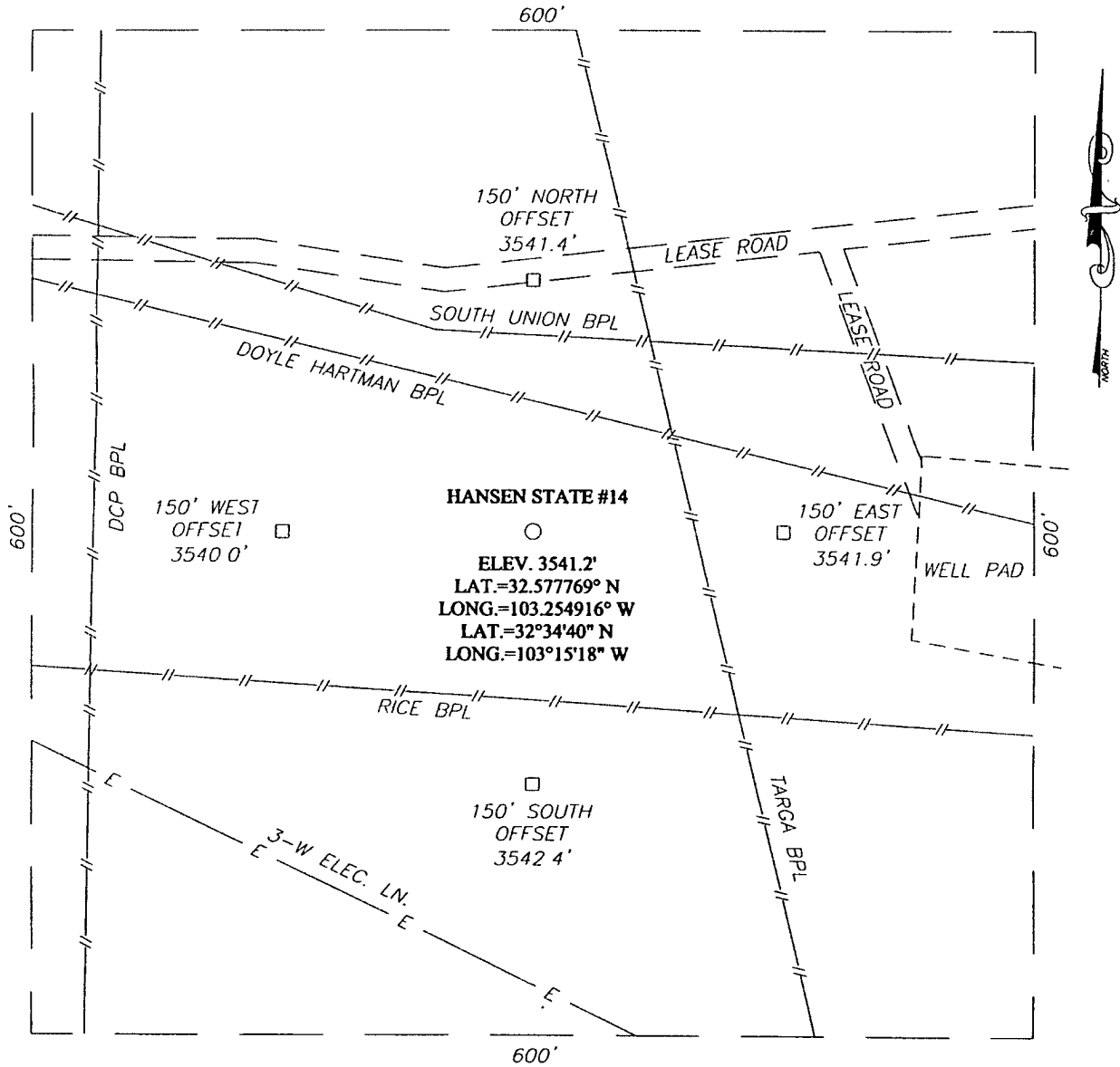
	<p>OPERATOR CERTIFICATION</p> <p>I hereby certify that the information herein is true and complete to the best of my knowledge and belief, and that this organization either owns a working interest or unleased mineral interest in the land including the proposed bottom hole location or has a right to drill this well at this location pursuant to a contract with an owner of such mineral or working interest, or to a voluntary pooling agreement or a compulsory pooling order heretofore entered by the division.</p> <p><i>Sorina L. Flores</i> 9/2/10 Signature Date</p> <p>Sorina L. Flores Printed Name</p>
	<p>SURVEYOR CERTIFICATION</p> <p>I hereby certify that the well location shown on this plat was plotted from field notes of actual surveys made by me or under my supervision, and that the same is true and correct to the best of my belief.</p> <p>AUGUST 17 2010 Date Surveyed</p> <p><i>Ronald E. Eidson</i> Signature Seal of Professional Surveyor</p> <p>RONALD E. EIDSON Professional Surveyor 10.11.1252</p> <p>Certificate No. RONALD EIDSON 3239</p>

GEODETIC COORDINATES
NAD 27 NME

Y=575587.6 N
X=832198.7 E

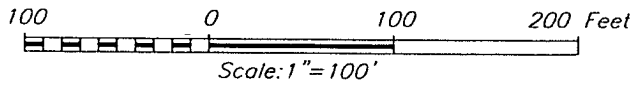
LAT.=32.577769° N
LONG =103.254916° W
LAT.=32°34'40" N
LONG.=103°15'18" W

SECTION 16, TOWNSHIP 20 SOUTH, RANGE 37 EAST, N.M.P.M.,
 LEA COUNTY, NEW MEXICO



DIRECTIONS TO LOCATION

FROM THE INTERSECTION OF HWY. 8 AND CO RD. #322 (MONUMENT) GO SOUTH ON HWY. #8 APPROX. 3.0 MILES TURN LEFT AND GO SOUTHEAST APPROX. 0.3 MILES VEER LEFT AND GO EAST APPROX 0.3 MILES. THE LOCATION STAKE IS APPROX. 150 FEET SOUTH.



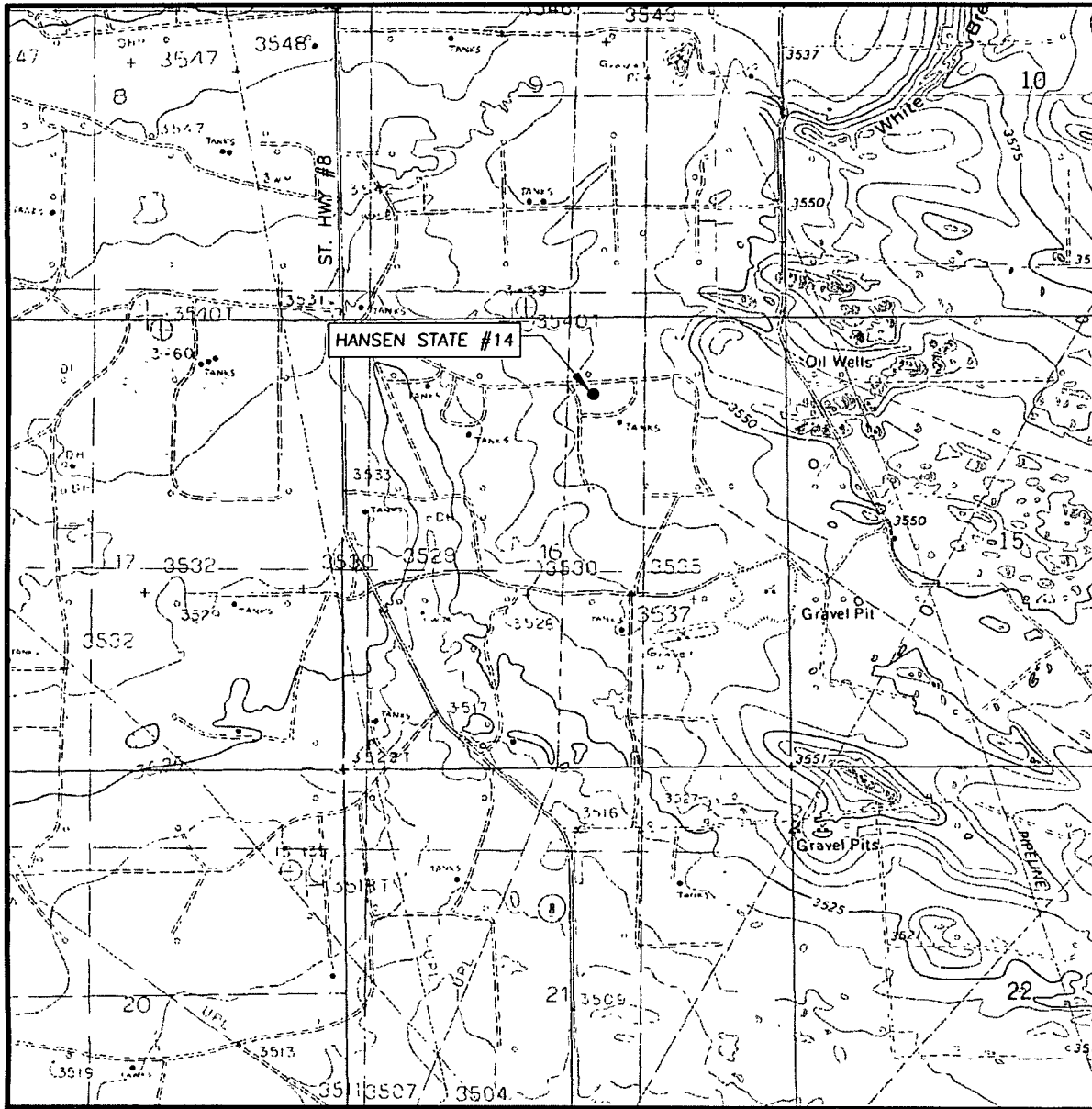
APACHE CORPORATION

HANSEN STATE #14
 LOCATED 910 FEET FROM THE NORTH LINE
 AND 2310 FEET FROM THE EAST LINE OF SECTION 16,
 TOWNSHIP 20 SOUTH, RANGE 37 EAST, N.M.P.M.,
 LEA COUNTY, NEW MEXICO.

Survey Date: 8/17/10	Sheet 1 of 1 Sheets
W.O. Number: 10.11.1252	Dr By: LA
Date: 8/25/10	12111252
	Scale: 1" = 100'

PROVIDING SURVEYING SERVICES SINCE 1946
JOHN WEST SURVEYING COMPANY
 412 N DAL PASO
 HOBBS, N.M. 88240
 (575) 393-3117

LOCATION VERIFICATION MAP



SCALE: 1" = 2000'

CONTOUR INTERVAL:
 HOBBS SW, N.M. - 5'
 MONUMENT SOUTH, N.M. - 5'

SEC. 16 TWP. 20-S RGE. 37-E

SURVEY _____ N.M.P.M.

COUNTY LEA STATE NEW MEXICO

DESCRIPTION 910' FNL & 2310' FEL


ELEVATION 3541'

OPERATOR APACHE CORPORATION

LEASE HANSEN STATE

U.S.G.S. TOPOGRAPHIC MAP

HOBBS SW, N.M



PROVIDING SURVEYING SERVICES
 SINCE 1946
JOHN WEST SURVEYING COMPANY
 412 N DAL PASO
 HOBBS, N.M. 88240
 (575) 393-3117