

DISTRICT I
1625 N. French Dr., Hobbs, NM 88240

DISTRICT II
1301 W. Grand Ave., Artesia, NM 88210

DISTRICT III
1000 Rio Brazos Rd., Aztec, NM 87410

DISTRICT IV
1220 St. Francis Dr., Santa Fe, NM 87505

State of New Mexico
Energy, Minerals and Natural Resources Department

Form C-102
Revised October 12, 2005

Submit to Appropriate District Office
State Lease-4 copies
Fee Lease-3 copies

OIL CONSERVATION DIVISION
1220 South St. Francis Drive
Santa Fe, NM 87505

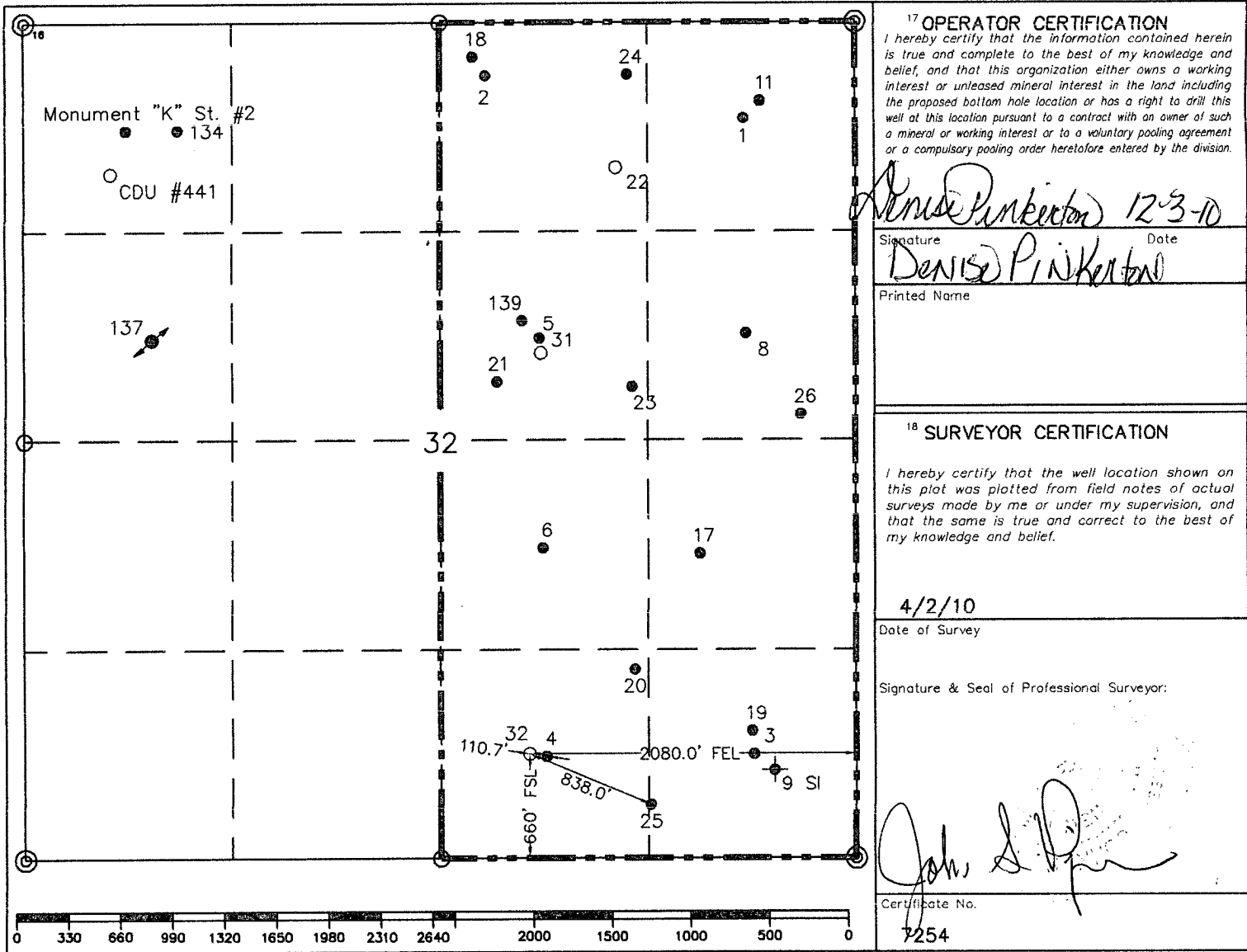
RECEIVED
DEC 06 2010
HOBBSDO

☐ AMENDED REPORT

WELL LOCATION AND ACREAGE DEDICATION PLAT

¹ API Number 30-025-39973		² Pool Code 60240		³ Pool Name Julia Oil & Gas					
⁴ Property Code 2690		⁵ Property Name W.T. McCOMACK				⁶ Well Number 32			
⁷ OGRID No. 4323		⁸ Operator Name CHEVRON USA				⁹ Elevation 3462'			
¹⁰ Surface Location									
UL or lot no. 0	Section 32	Township 21-S	Range 37-E	Lot Idn 660'	Feet from the South	North/South line 2080'	East/West line East	County Lea	
¹¹ Bottom Hole Location If Different From Surface									
UL or lot no.	Section	Township	Range	Lot Idn	Feet from the	North/South line	Feet from the	East/West line	County
¹² Dedicated Acres 40		¹³ Joint or Infill		¹⁴ Consolidation Code		¹⁵ Order No.			

NO ALLOWABLE WILL BE ASSIGNED TO THIS COMPLETION UNTIL ALL INTERESTS HAVE BEEN CONSOLIDATED
OR A NON-STANDARD UNIT HAS BEEN APPROVED BY THE DIVISION.



○ = Staked Location • = Producing Well ⊕ = Injection Well ◇ = Water Supply Well ⊛ = Plugged & Abandon Well
⊙ = Found Section Corner, 2 or 3" Iron Pipe & GLO B.C. ○ = Found /4 Section Corner, 1" Iron Pipe & GLO B.C.

ADDITIONAL INFORMATION ON THE LOCATION

State Plane Coordinates			
Northing 522057.96 (1927 NAD= 521998.58)	Easting 896170.07 (1927 NAD= 854985.49)		
Latitude 32°25'47.832"	Longitude 103°10'59.887"		
Zone North American Datum	Combined Grid Factor	Coordinate File	
East 1983/HARN	0.9998912	Weatherly83E.crd	
Drawing File	Field Book		
Chevron-Weatherly.Dwg	Lea #24, Pg. 44		