

RECEIVED

DISTRICT I
1625 N. French Dr., Hobbs, NM 88240
DISTRICT II
1301 W. Grand Avenue, Artesia, NM 88210
DISTRICT III
1000 Rio Brazos Rd., Aztec, NM 87410
DISTRICT IV
1220 S. St. Francis Dr., Santa Fe, NM 87505

FEB 23 2011
HOBBSSUCD

State of New Mexico
Energy, Minerals and Natural Resources Department

Form C-102
Revised July 16, 2010

Submit one copy to appropriate
District Office

OIL CONSERVATION DIVISION
1220 South St. Francis Dr.
Santa Fe, New Mexico 87505

WELL LOCATION AND ACREAGE DEDICATION PLAT

AMENDED REPORT

API Number 30-025-36675	Pool Code 47090	Pool Name MONUMENT; TUBB
Property Code 302374	Property Name V LAUGHLIN	Well Number 5H
OGRID No. 873	Operator Name APACHE CORPORATION	Elevation 3556'

Surface Location

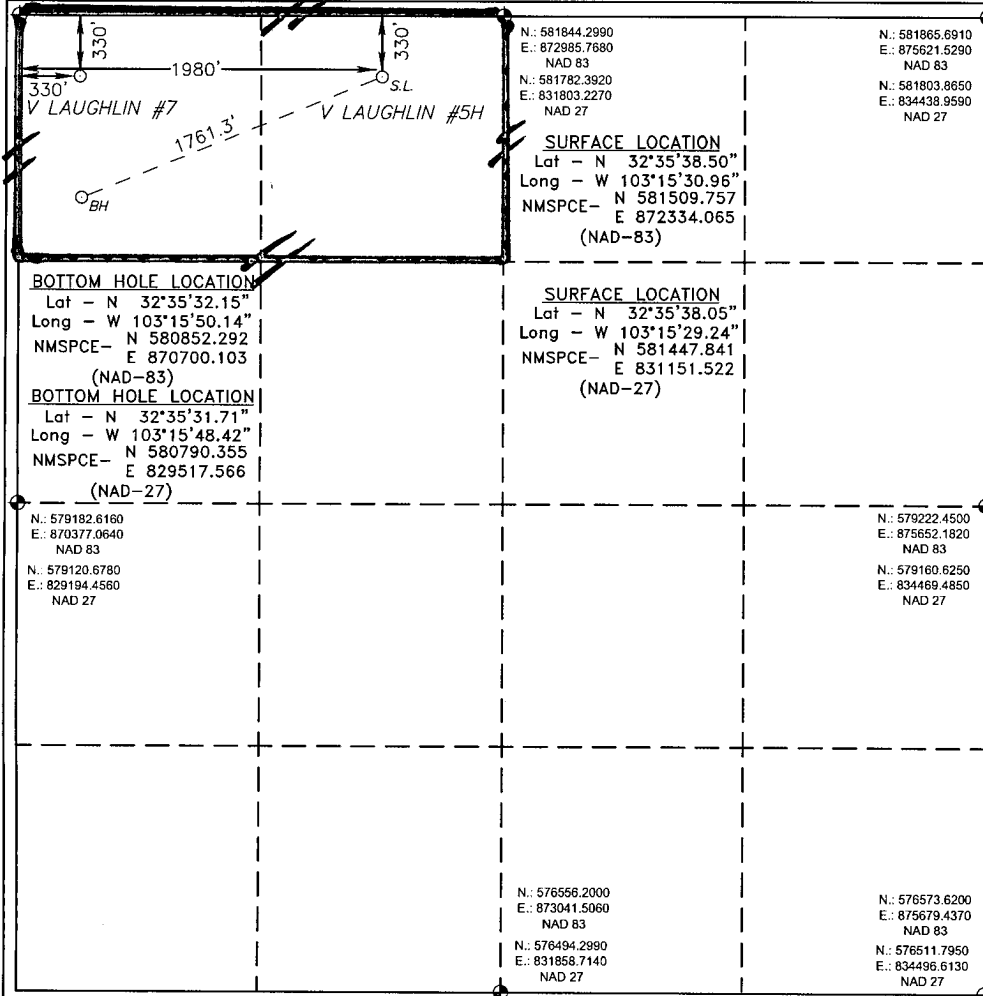
UL or lot No.	Section	Township	Range	Lot Idn	Feet from the	North/South line	Feet from the	East/West line	County
C	9	20 S	37 E		330	NORTH	1980	WEST	LEA

Bottom Hole Location If Different From Surface

UL or lot No.	Section	Township	Range	Lot Idn	Feet from the	North/South line	Feet from the	East/West line	County
D	9	20 S	37 E		1008 330	NORTH	351 340	WEST	LEA
Dedicated Acres 80	Joint or Infill	Consolidation Code	Order No. DHC-3299						

N.: 581830.4560 N.: 581788.5120
E.: 870350.1450 E.: 829167.6810
NAD 83 NAD 27

NO ALLOWABLE WILL BE ASSIGNED TO THIS COMPLETION UNTIL ALL INTERESTS HAVE BEEN CONSOLIDATED
OR A NON-STANDARD UNIT HAS BEEN APPROVED BY THE DIVISION



OPERATOR CERTIFICATION
I hereby certify that the information contained herein is true and complete to the best of my knowledge and belief, and that this organization either owns a working interest or unleased mineral interest in the land including the proposed bottom hole location or has a right to drill this well at this location pursuant to a contract with an owner of such a mineral or working interest, or to a voluntary pooling agreement or a compulsory pooling order heretofore entered by the division.

Reesa Holland 2/22/11
Signature Date

REESA HOLLAND
Printed Name

Reesa.Holland@apachecorp.com
Email Address

SURVEYOR CERTIFICATION
I hereby certify that the well location shown on this plat was plotted from field notes of actual surveys made by me or under my supervision, and that the same is true and correct to the best of my belief.

Date Surveyed _____
Signature & Seal of Professional Surveyor

Certificate No. Gary L. Jones 7977

BASIN SURVEYS 23260

DISTRICT I
1625 N. French Dr., Hobbs, NM 88201
DISTRICT II
1301 W. Grand Avenue, Artesia, NM 88210

DISTRICT III
1000 Rio Brazos Rd., Aztec, NM 87410

DISTRICT IV
1220 S. St. Francis Dr., Santa Fe, NM 87505

RECEIVED

State of New Mexico
Energy, Minerals and Natural Resources Department

Form C-102
Revised July 16, 2010

Submit one copy to appropriate
District Office

FEB 23 2011
OIL
HOBSOCD

CONSERVATION DIVISION
1220 South St. Francis Dr.
Santa Fe, New Mexico 87505

WELL LOCATION AND ACREAGE DEDICATION PLAT

AMENDED REPORT

API Number 30-025-36675	Pool Code 96764	Pool Name MONUMENT; ABO, SOUTHEAST
Property Code 302374	Property Name V LAUGHLIN	Well Number 5
OGRID No. 873	Operator Name APACHE CORPORATION	Elevation 3556'

Surface Location

UL or lot No.	Section	Township	Range	Lot Idn	Feet from the	North/South line	Feet from the	East/West line	County
C	9	20 S	37 E		330	NORTH	1980	WEST	LEA

Bottom Hole Location If Different From Surface

UL or lot No.	Section	Township	Range	Lot Idn	Feet from the	North/South line	Feet from the	East/West line	County
D	9	20 S	37 E		980	NORTH	340	WEST	LEA

Dedicated Acres 80	Joint or Infill	Consolidation Code	Order No. DHC-3299
-----------------------	-----------------	--------------------	-----------------------

NO ALLOWABLE WILL BE ASSIGNED TO THIS COMPLETION UNTIL ALL INTERESTS HAVE BEEN CONSOLIDATED OR A NON-STANDARD UNIT HAS BEEN APPROVED BY THE DIVISION

<p>N.: 581830.4560 E.: 870350.1450 NAD 83</p> <p>N.: 581768.5120 E.: 829167.6610 NAD 27</p> <p>1980'</p> <p>330'</p> <p>1761.3'</p> <p>BH</p> <p>SL</p>	<p>N.: 581844.2990 E.: 872985.7680 NAD 83</p> <p>N.: 581782.3920 E.: 831803.2270 NAD 27</p> <p>SURFACE LOCATION Lat - N 32°35'38.50" Long - W 103°15'30.96" NMSPC- N 581509.757 E 872334.065 (NAD-83)</p>	<p>N.: 581865.6910 E.: 875621.5290 NAD 83</p> <p>N.: 581803.8650 E.: 834438.9590 NAD 27</p>	<p>OPERATOR CERTIFICATION I hereby certify that the information contained herein is true and complete to the best of my knowledge and belief, and that this organization either owns a working interest or unleased mineral interest in the land including the proposed bottom hole location or has a right to drill this well at this location pursuant to a contract with an owner of such a mineral or working interest, or to a voluntary pooling agreement or a compulsory pooling order heretofore entered by the division.</p> <p>Reesa Holland 2/22/11 Signature Date</p> <p>REESA HOLLAND Printed Name</p> <p>Reesa.Holland@apachecorp.com Email Address</p>
<p>BOTTOM HOLE LOCATION Lat - N 32°35'32.15" Long - W 103°15'50.14" NMSPC- N 580852.292 E 870700.103 (NAD-83)</p> <p>BOTTOM HOLE LOCATION Lat - N 32°35'31.71" Long - W 103°15'48.42" NMSPC- N 580790.355 E 829517.566 (NAD-27)</p>	<p>SURFACE LOCATION Lat - N 32°05'38.05" Long - W 103°15'29.24" NMSPC- N 581447.841 E 831151.522 (NAD-27)</p>	<p>N.: 579222.4500 E.: 875652.1820 NAD 83</p> <p>N.: 579160.6250 E.: 834469.4850 NAD 27</p>	<p>SURVEYOR CERTIFICATION I hereby certify that the well location shown on this plat was plotted from field notes of actual surveys made by me or under my supervision and that the same is true and correct to the best of my belief.</p> <p>ALBERT L. JONES Date Surveyed Signature & Seal of Professional Surveyor 7977</p>
<p>N.: 579182.6160 E.: 870377.0640 NAD 83</p> <p>N.: 579120.6780 E.: 829194.4560 NAD 27</p>	<p>N.: 576556.2000 E.: 873041.5060 NAD 83</p> <p>N.: 576494.2990 E.: 831858.7140 NAD 27</p>	<p>N.: 576573.6200 E.: 875679.4370 NAD 83</p> <p>N.: 576511.7950 E.: 834486.6130 NAD 27</p>	<p>Certificate No. Gary L. Jones 7977</p> <p>BASIN SURVEYS 23260</p>