

Submit 3 Copies To Appropriate District
Office
District I
1625 N. French Dr., Hobbs, NM 87240
District II
1301 W. Grand Ave., Artesia, NM 88210
District III
1000 Rio Brazos Rd., Aztec, NM 87410
District IV
1220 S. St. Francis Dr., Santa Fe, NM 87505

State of New Mexico
Energy, Minerals and Natural Resources

Form C-103
June 19, 2008

OIL CONSERVATION DIVISION
1220 South St. Francis Dr.
Santa Fe, NM 87505

HOBBS OGD

APR 27 2011

| | |
|--|---|
| SUNDRY NOTICES AND REPORTS ON WELLS (DO NOT USE THIS FORM FOR PROPOSALS TO DRILL OR TO DEEPEN OR PLUG BACK TO A DIFFERENT RESERVOIR. USE "APPLICATION FOR PERMIT" (FORM C-101) FOR SUCH PROPOSALS.) | |
| 1. Type of Well: Oil Well <input type="checkbox"/> Gas Well <input type="checkbox"/> Other <u>Water injection</u> | WELL API NO. 30-025-11526 |
| 2. Name of Operator <u>Energen Resources Corporation</u> | 5. Indicate Type of Lease STATE <input type="checkbox"/> FEE <input checked="" type="checkbox"/> |
| 3. Address of Operator <u>3300 N. 'A', Bldg. 4, Ste. 100</u> | 6. State Oil & Gas Lease No. |
| 4. Well Location Unit Letter <u>U-A</u> : <u>660</u> feet from the <u>North</u> line and <u>660</u> feet from the <u>East</u> line Section <u>10</u> Township <u>25S</u> Range <u>37E</u> NMPM County <u>Lea</u> | 7. Lease Name or Unit Agreement Name: <u>Stuart Langlie Mattix Unit</u> |
| | 8. Well Number <u>111</u> |
| | 9. OGRID Number <u>162928</u> |
| | 10. Pool name or Wildcat <u>Langlie Mattix 7 RVRs Queen Grayburg</u> |
| 11. Elevation (Show whether DR, RKB, RT, GR, etc.) <u>DF: 3132'</u> | |

12. Check Appropriate Box to Indicate Nature of Notice, Report, or Other Data

NOTICE OF INTENTION TO:

PERFORM REMEDIAL WORK ☐ PLUG AND ABANDON ☒
TEMPORARILY ABANDON ☐ CHANGE PLANS ☐
PULL OR ALTER CASING ☐ MULTIPLE COMPL ☐
DOWNHOLE COMMINGLE ☐

OTHER: ☐

SUBSEQUENT REPORT OF:

REMEDIAL WORK ☐ ALTERING CASING ☐
COMMENCE DRILLING OPNS. ☐ P AND A ☐
CASING/CEMENT JOB ☐

OTHER: ☐

13. Describe proposed or completed operations. (Clearly state all pertinent details, and give pertinent dates, including estimated date of starting any proposed work). SEE RULE 1103. For Multiple Completions: Attach wellbore diagram of proposed completion or recompletion.

See attached procedure.

Spud Date:

Rig Release Date:

I hereby certify that the information above is true and complete to the best of my knowledge and belief.

SIGNATURE Tracie J Cherry TITLE Asst. Supv Regulatory/Admin DATE 04-26-11
Type or print name Tracie J Cherry E-mail address: tracie.cherry@energen.com PHONE 432/684-3692

For State Use Only

APPROVED BY [Signature] TITLE STAFF MGR DATE 4-28-2011
Conditions of Approval (if any):

ENERGEN RESOURCES CORPORATION

Stuart Langlie Mattix Unit #111

30-025-11526

660' FNL and 660' FEL

Sec 10, T-25-S, R-37-E

Lea, Co. NM

Langlie Mattix Field (7 RVRS-Q-Grayburg)

See Attached Wellbore Diagrams:

Plugging Procedure:

1. RIH with tbg, tag CIBP @ 3715'.
2. RIH with packer, identify depth of water flow.
3. Notify Midland Engineering and NMOCD.
4. If source of flow is determined to be from 4-1/2" liner and 7" casing annulus, RIH with 7" CIBP and set @ 2750'.
5. Verify water flow has ceased.
6. Dump bail 35' of cement on CIBP.
7. WOC - Tag cement plug.
8. Fill remaining wellbore with MLF
9. RIH with perf guns to 1250'. Perforate casing with 4 sqz holes.
10. Pump 60 sx cement through sqz holes at 1250'.
11. WOC - Tag cement plug.
12. RIH with perf guns to 305'. Perforate casing with 4 sqz holes.
13. Circulate cement to surface through perfs at 305'.
14. Cut off wellhead 3' from surface and weld on P&A marker.

ENERGEN RESOURCES

Stuart Langlie Mattix Unit #111

Lea County, NM

Current Conditions: 4/19/2011

SI WSW

Conductor:

None

Surface Casing:

10-3/4" 32.75# @ 255'

Hole Size: 13-3/4"

Cemented to surface

w/ 250 sx

Intermediate Casing:

7" 24# Grade D

& 22# Grade B @ 3324'

Hole Size: 8-5/8"

Cemented w/ 350 sx

TOC: 2440' (calc)

Production Liner:

4-1/2"

From 2874' - 3795'

Cemented w/ 275 sx

in 6-1/4" hole

Cement top 930' (calc)

GR Elevation: 3126'

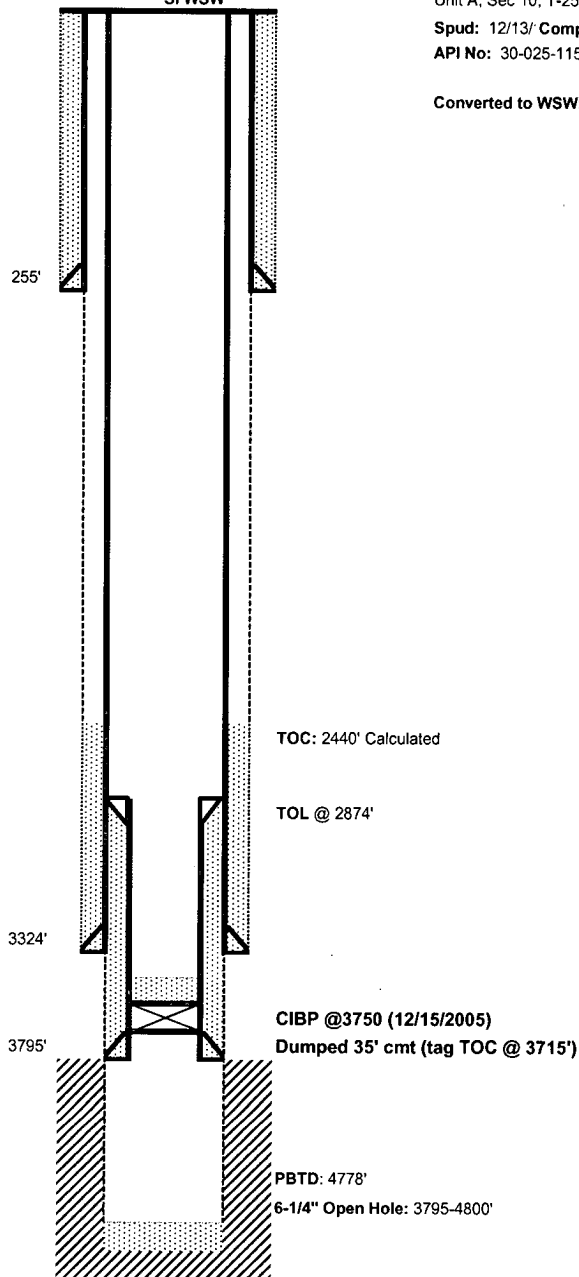
Location: 660' FNL X 660' FEL

Unit A, Sec 10, T-25-S, R-37-E

Spud: 12/13/ Completed: 1/12/1939

API No: 30-025-11526

Converted to WSW: 10/1987



ENERGEN RESOURCES

Stuart Langlie Mattix Unit #111

Lea County, NM

GR Elevation: 3126'

Location: 660' FNL X 660' FEL

Unit A, Sec 10, T-25-S, R-37-E

Conductor:

None

Surface Casing:

10-3/4" 32.75# @ 255'

Hole Size: 13-3/4"

Cemented to surface

w/ 250 sx

255'

Cut off wellhead & weld on 1/2" steel plate
dead man marker.

Perf & Squeeze between ~~1" & 2-5/8"~~
@ 305', Circ. To Surface

MLF

Intermediate Casing:

7" 24# Grade D

& 22# Grade B . @ 3324'

Hole Size: 8-5/8"

Cemented w/ 350 sx

TOC: 2440' (calc)

Perf & Squeeze between ~~1" & 2-5/8"~~
@ 1250'

MLF

TOC: 2440' Calculated

SPOT 25SX

Dump Bail 95' cmt

Set @ 2775'

TOL @ 2874'

2925' - Bottom amt

3275 Tag Top

3375 Bottom amt

CIBP @ 3750 (12/15/2005)

Dumped 35' cmt (tag TOC @ 3715')

PBTD: 4778'

6-1/4" Open Hole: 3795-4800'

Production Liner:

4-1/2"

From 2874' - 3795'

Cemented w/275 sx

in 6-1/4" hole

Cement top 930' (calc)

3324'

3795'

Dump BAIL 10SX Cmt @ 3375'

RIH Tag CIBP @ 3715'
CIRC well w/ MLF