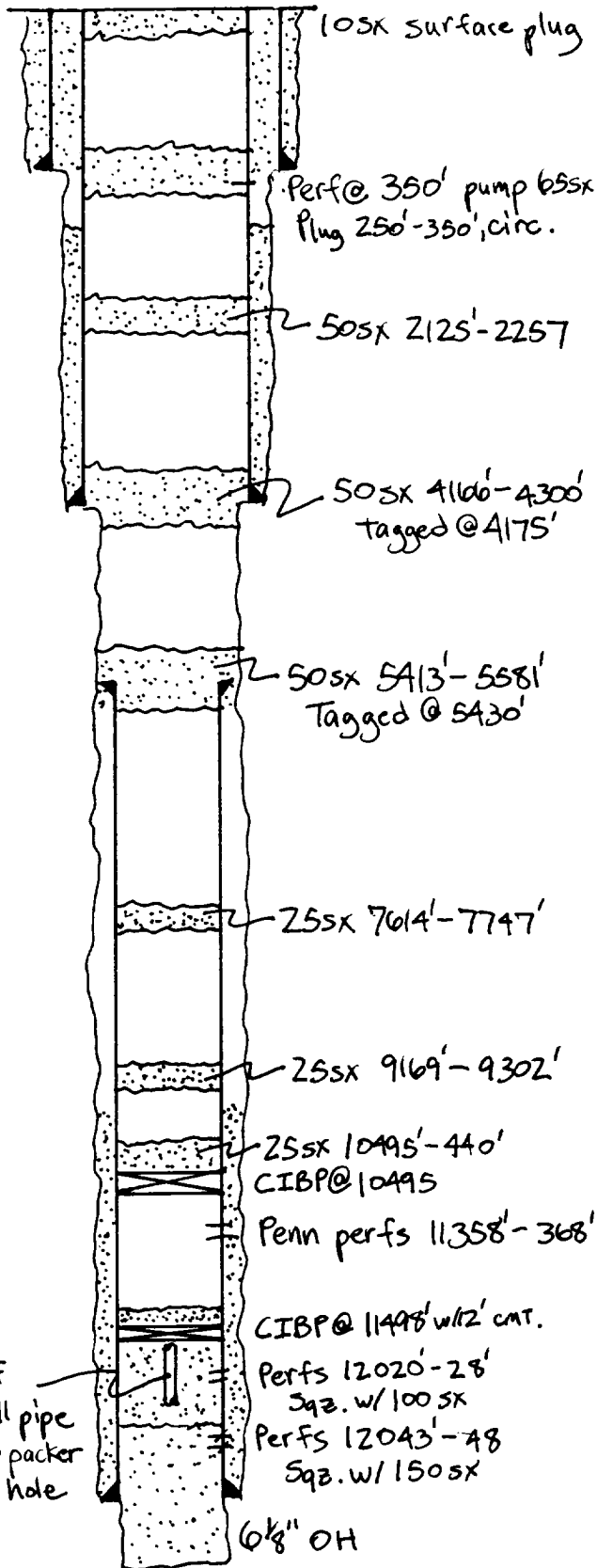


OPERATOR: Saga Petroleum LLC of CO	LOCATION: Sec. 27, T9S, R36E, Lea County, NM
Lease: U.D. Sawyer #9	Unit H, 1980' FNL + 990' FEL



1 3/8" casing set at 273' with 275' sx of cement.

Hole Size: 1 7/2" . TOC @ Surf by circ.

9 5/8" casing set at 4240' with 1440' sx of cement.

Hole Size: 12 1/4" . TOC @ 1520' by TS.

7" casing cut and pulled at 5540'.

7" casing set at 12049' with 250' sx of cement.

Hole Size: 8 3/4" . 1st Stage: TOC @ 9400' by TS.
2nd Stage: TOC @ _____' by _____.

Total depth 12068' DV Tool @ N/A.