

NEW MEXICO OIL CONSERVATION COMMISSION
WELL LOCATION AND ACREAGE DEDICATION PLAT

Form O-100
Supersedes O-128
Effective 10-65

All distances must be from the outer boundaries of the Section

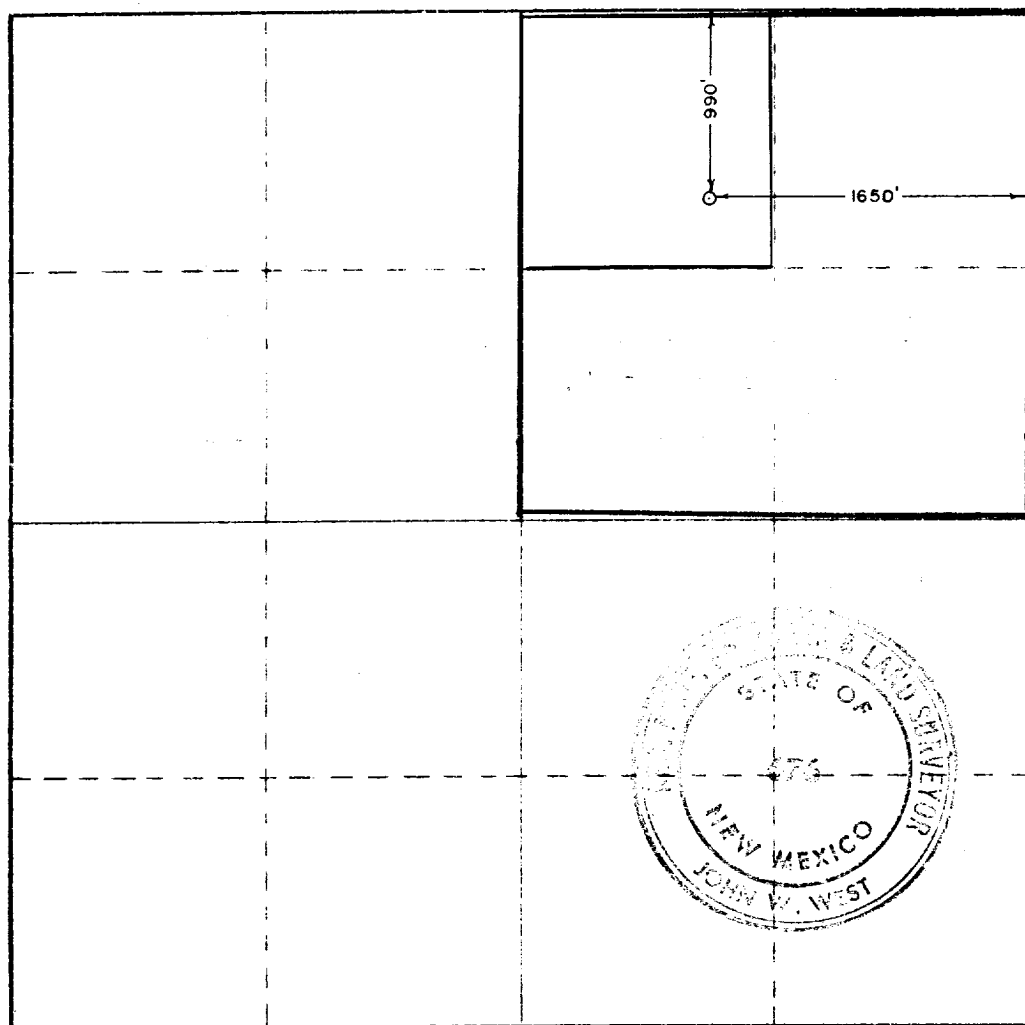
Operator H. C. HOOD		Lease LARIO STATE			Well No. 1
Unit Letter B	Section 12	Township 9 SOUTH	Range 32 EAST	County LEA	
Actual Footage Location of Well: 990 feet from the NORTH line and 1650 feet from the EAST line					
Ground Level Elev. 4406	Producing Formation Poma	Pool UNDESIGNATED		Surface Acreage 40-100	

- Outline the acreage dedicated to the subject well by colored pencil or hachure marks on the plat below.
- If more than one lease is dedicated to the well, outline each and identify the ownership thereof (both as to working interest and royalty).
- If more than one lease of different ownership is dedicated to the well, have the interests of all owners been consolidated by communitization, unitization, force-pooling, etc?

Yes No If answer is "yes," type of consolidation _____

If answer is "no," list the owners and tract descriptions which have actually been consolidated. (Use reverse side of this form if necessary.) _____

No allowable will be assigned to the well until all interests have been consolidated (by communitization, unitization, forced-pooling, or otherwise) or until a non-standard unit, eliminating such interests, has been approved by the Commission.



CERTIFICATION

I hereby certify that the information contained herein is true and complete to the best of my knowledge and belief.

[Signature]
Agent

H. C. HOOD

January 19, 1968

I hereby certify that the well location shown on this plat was plotted from field notes of actual surveys made by me or under my supervision, and that the same is true and correct to the best of my knowledge and belief.

JANUARY 16, 1968

Date surveyed

Registered Professional Engineer and/or Land Surveyor

[Signature]
Certificate No. **676**

