

NE EXICO OIL CONSERVATION COMMISSIC
WELL LOCATION AND ACREAGE DEDICATION PLAT

Form C-102
Supersedes C-128
Effective 1-4-65

All distances must be from the outer boundaries of the Section

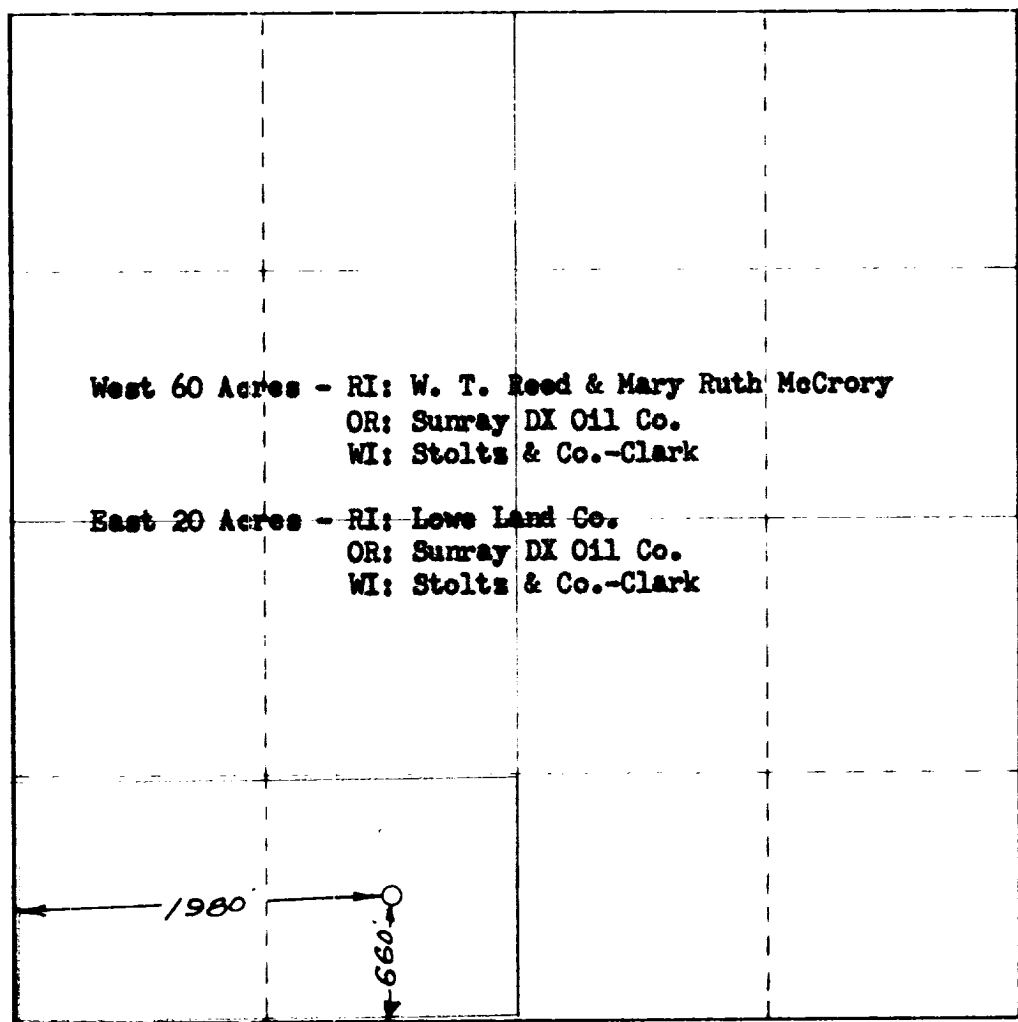
Operator STOLTZ AND COMPANY-CLARK		Lease <i>LEIGH</i>			Well No. 1
Init. Letter N	Section 20	Township 11 S.	Range 33 E.	County Lea	
Actual Footage Location of Well: 660 feet from the South line and 1980 feet from the West line					
Ground Level Elev. 4302	Producing Formation Lower Penn		Pool Undes. North Bagley	Dedicated Acreage: 80 Acres	

1. Outline the acreage dedicated to the subject well by colored pencil or hachure marks on the plat below.
2. If more than one lease is dedicated to the well, outline each and identify the ownership thereof (both as to working interest and royalty)
3. If more than one lease of different ownership is dedicated to the well, have the interests of all owners been consolidated by communitization, unitization, force-pooling, etc?

Yes No If answer is "yes," type of consolidation **Unitization**

If answer is "no," list the owners and tract descriptions which have actually been consolidated. (Use reverse side of this form if necessary)

No allowable will be assigned to the well until all interests have been consolidated (by communitization, unitization, forced-pooling, or otherwise) or until a non-standard unit, eliminating such interests, has been approved by the Commission.



CERTIFICATION

I hereby certify that the information contained herein is true and complete to the best of my knowledge and belief.

Name *H. L. Smut*

Position
Agent

Company
Stolts & Co.-Clark

Date
4/16/68

I hereby certify that the well location shown on this plat was plotted from field notes of actual surveys made by me or under my supervision, and that the same is true and correct to the best of my knowledge and belief.

Date Surveyed
April 15, 1968

Registered Professional Engineer and/or Land Surveyor

Certificate No. *Henschel*

3640