

WELL LOCATION AND ACREAGE DEDICATION PLAT

Supplement C-128
Effective 1-1-85

All distances must be from the outer boundaries of the Section

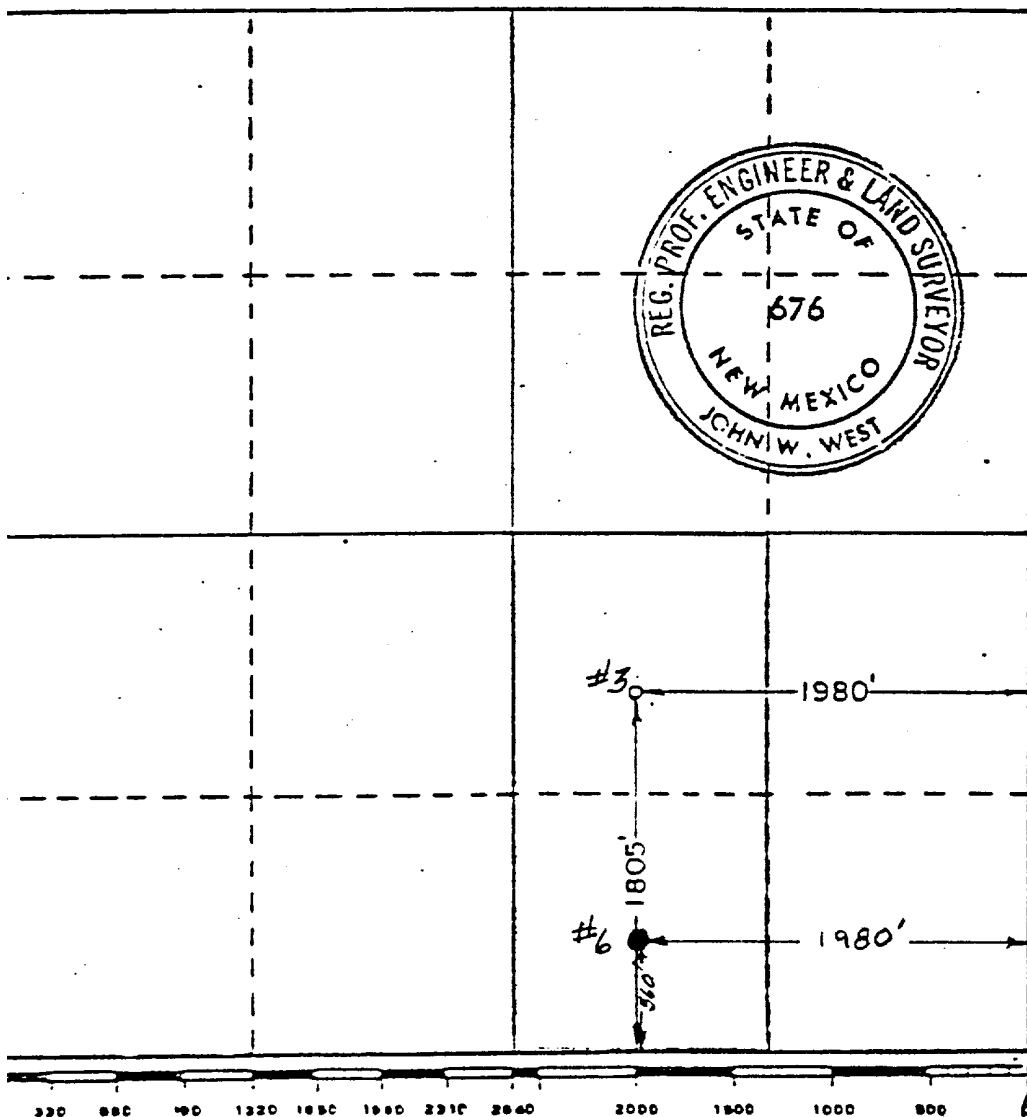
Lessor COASTAL STATES GAS PRODUCING CO.		Lessee SANTA FE		Well No. 3
Section Letter J	Section 33	Township 9 SOUTH	Range 37 EAST	County LEA
Well Location of Well: 1805 feet from the SOUTH line and 1980 feet from the EAST line				
Well Depth Elev. 3954.2	Producing Formation San Andres	Pool Undes West Sawyer	Dedicated Acreage: 80 Acres	

1. Outline the acreage dedicated to the subject well by colored pencil or hachure marks on the plat below.
2. If more than one lease is dedicated to the well, outline each and identify the ownership thereof (both as to working interest and royalty).
3. If more than one lease of different ownership is dedicated to the well, have the interests of all owners been consolidated by communitization, unitization, force-pooling, etc?

Yes No If answer is "yes," type of consolidation _____

If answer is "no," list the owners and tract descriptions which have actually been consolidated. (Use reverse side of this form if necessary.) _____

No allowable will be assigned to the well until all interests have been consolidated (by communitization, unitization, forced-pooling, or otherwise) or until a non-standard unit, eliminating such interests, has been approved by the Commission.



CERTIFICATION

I hereby certify that the information contained herein is true and complete to the best of my knowledge and belief.

Robbin Stephenson
Name
Production Analyst
Position
Coastal Oil & Gas Corp.
Company
December 2, 1981
Date

I hereby certify that the well location shown on this plat was plotted from field notes of actual surveys made by me or under my supervision, and that the same is true and correct to the best of my knowledge and belief.

Date Surveyed
SEPTEMBER 30, 1969
Registered Professional Engineer and/or Land Surveyor
John W. West
Certificate No. **676**

NEW MEXICO OIL CONSERVATION COMMISSION
WELL LOCATION AND ACREAGE DEDICATION PLAT

Form C-102
Supersedes C-128
Effective 1-1-65

All distances must be from the outer boundaries of the Section.

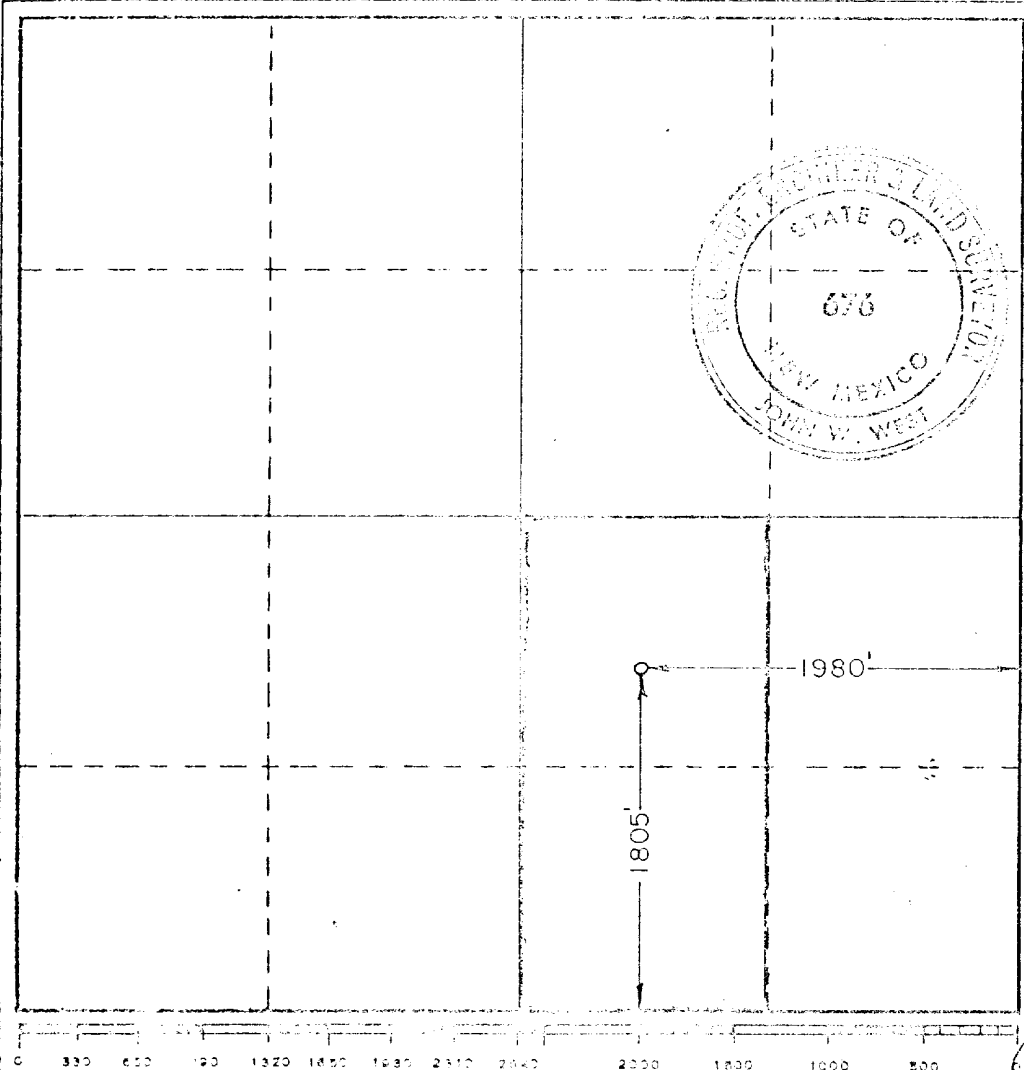
Operator COASTAL STATES GAS PRODUCING CO.		Lease SANTA FE		Well No. 3
Unit Letter J	Section 33	Township 9 SOUTH	Range 37 EAST	County LEA
Actual Footage Location of Well: 1805 feet from the SOUTH line and 1980 feet from the EAST line				
Ground Level Elev. 3954.2	Producing Formation San Andres	Pool Unders West Sawyer	Dedicated Acreage: 80 Acres	

1. Outline the acreage dedicated to the subject well by colored pencil or hachure marks on the plat below.
2. If more than one lease is dedicated to the well, outline each and identify the ownership thereof (both as to working interest and royalty).
3. If more than one lease of different ownership is dedicated to the well, have the interests of all owners been consolidated by communitization, unitization, force-pooling, etc?

Yes No If answer is "yes" type of consolidation _____

If answer is "no" list the owners and trust descriptions which have actually been consolidated. (Use reverse side of this form if necessary.) _____

No allowable will be assigned to the well until all interests have been consolidated (by communitization, unitization, forced-pooling, or otherwise) or until a non-standard unit, eliminating such interests, has been approved by the Commission.



CERTIFICATION

I hereby certify that the information contained herein is true and complete to the best of my knowledge and belief.

Name: J. L. Smith

Position: Agent

Company: Coastal States Gas Prod. Co.

Date: October 1, 1969

I hereby certify that the well location shown on this plat was plotted from field notes of actual surveys made by me or under my supervision, and that the same is true and correct to the best of my knowledge and belief.

Date Surveyed: SEPTEMBER 30, 1969

Registered Professional Engineer and/or Land Surveyor

J. W. West

Certificate No. **676**

vugs, seat bldg oil
Cored 4978-5005', rec 27' dolo, seat PFF,
seat bldg salt wtr, oil & wtr
Perf 4928-32', 4939-43', 4952-57', 4970-86'
w/1 SFF
Acid (4928-57') 500 gals + 2500 gals + 1000

LEA Sawyer, W. NM Sec 33, T9S, R37E
COASTAL STATES GAS PROD. CO. 3 Santa Fe Page #2

10-21-69 Continued
Acid (4970-86') 500 gals + 2500 gals + 3000 gals
10-27-69 TD 5005'; PBD 5001'; TO Pmp
Ppd 164 BO + 100 BW in 24 hrs (4928-86')
11-3-69 TD 5005'; PBD 5001'; COMPLETE
LOG TOPS: Anhydrite 2220', Yates 2890',
San Andres 4180'
11-6-69 COMPLETION REPORTED