

UNITED STATES
DEPARTMENT OF THE INTERIOR
GEOLOGICAL SURVEY

24371
5. LEASE DESIGNATION AND SERIAL NO.

LC 065151

APPLICATION FOR PERMIT TO DRILL, DEEPEN, OR PLUG BACK

1a. TYPE OF WORK
DRILL DEEPEN PLUG BACK

b. TYPE OF WELL
OIL WELL GAS WELL OTHER SINGLE ZONE MULTIPLE ZONE

2. NAME OF OPERATOR
Flag-Redfern Oil Company

3. ADDRESS OF OPERATOR
P. O. Box 23, Midland, Texas 79701

4. LOCATION OF WELL (Report location clearly and in accordance with any State requirements.*)
At surface 660' FNL & 660' FEL Section 23, T-9-S, R-37-E.
At proposed prod. zone Same

14. DISTANCE IN MILES AND DIRECTION FROM NEAREST TOWN OR POST OFFICE*
15 miles east Cross roads, New Mexico

15. DISTANCE FROM PROPOSED* LOCATION TO NEAREST PROPERTY OR LEASE LINE, FT. (Also to nearest drlg. unit line, if any)
660'

16. NO. OF ACRES IN LEASE
160

17. NO. OF ACRES ASSIGNED TO THIS WELL
40/160

18. DISTANCE FROM PROPOSED LOCATION* TO NEAREST WELL, DRILLING, COMPLETED, OR APPLIED FOR, ON THIS LEASE, FT.
None

19. PROPOSED DEPTH
5100'

20. ROTARY OR CABLE TOOLS
Rotary

21. ELEVATIONS (Show whether DF, RT, GR, etc.)
3981' Ground

22. APPROX. DATE WORK WILL START*
November 23, 1972

23. PROPOSED CASING AND CEMENTING PROGRAM

SIZE OF HOLE	SIZE OF CASING	WEIGHT PER FOOT	SETTING DEPTH	QUANTITY OF CEMENT
12 1/4"	8 5/8"	24# J-55	400	250 sx - Circulate
7 7/8"	4 1/2"	9.5# J-55	5100	250 sx

Drill 12 1/4" hole from surface at approximately 400' - Run & set 8 5/8" casing, circulate cement to surface with 250 sx class H-2% Cacl. Drill 7 7/8" hole to approximately 5100'. Run open hole logs. Run 4 1/2", 9.5 lb/ft, J-55 production casing. Cement with 250 sx class C, 2% gel, 0.75% CFR-2, 8 lb salt per sack. Run correlation log. Perforate San Andres. Treat with acid. Swab to test. Potential well.

Mud Program - 0-4800' - Native Mud
4800' - TD - Salt Base Mud - WT 10.3, Vis 38, WL 15 cc

Blowout Preventor - Shaffer 10" - Series 900 - Installed on surface pipe.

IN ABOVE SPACE DESCRIBE PROPOSED PROGRAM: If proposal is to deepen or plug back, give data on present productive zone and proposed new productive zone. If proposal is to drill or deepen directionally, give pertinent data on subsurface locations and measured and true vertical depths. Give blowout preventer program, if any.

24. SIGNED Bryan H. Brea TITLE Prod Mgr DATE 11-9-72

(This space for Federal or State office use)

PERMIT NO. _____ APPROVAL DATE _____

APPROVED BY _____ TITLE _____

CONDITIONS OF APPROVAL, IF ANY:

APPROVED
DEC 3 1972
ARTHUR R. BROWN
DISTRICT ENGINEER

RECEIVED

12 1972

**OIL CONSERVATION COMM.
HOBBS, N. M.**

NEW MEXICO OIL CONSERVATION COMMISSION
WELL LOCATION AND ACREAGE DEDICATION PLAT

Form C-102
Supersedes C-128
Effective 1-1-65

All distances must be from the outer boundaries of the Section.

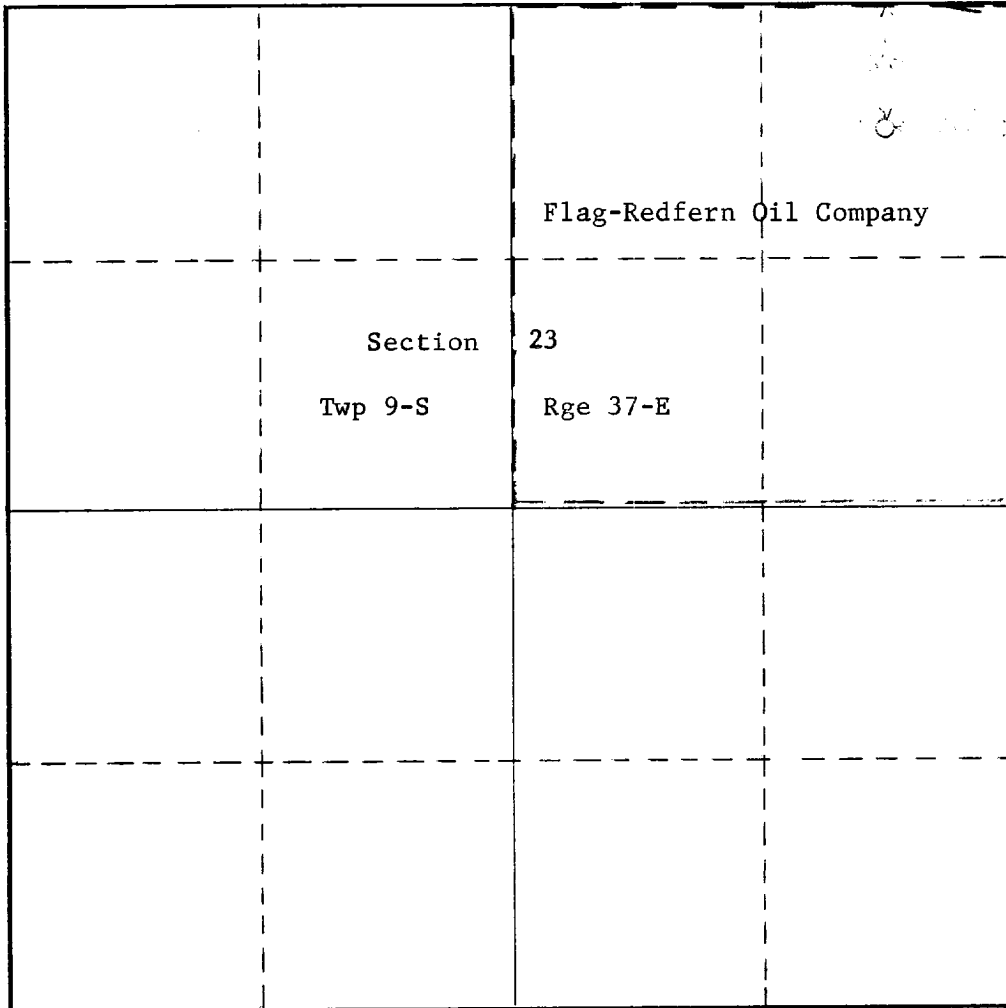
Operator Flag-Redfern Oil Company			Lease Bilbrey 51			Well No. 1		
Unit Letter A	Section 23	Township 9-S	Range 37-E	County Lea				
Actual Footage Location of Well: 660 feet from the North line and 660 feet from the East line								
Ground Level Elev. 3981	Producing Formation San Andres		Pool Sawyer DESIGNATED			Dedicated Acreage: 160 Acres		

1. Outline the acreage dedicated to the subject well by colored pencil or hachure marks on the plat below.
2. If more than one lease is dedicated to the well, outline each and identify the ownership thereof (both as to working interest and royalty).
3. If more than one lease of different ownership is dedicated to the well, have the interests of all owners been consolidated by communitization, unitization, force-pooling, etc?

Yes No If answer is "yes," type of consolidation _____

If answer is "no," list the owners and tract descriptions which have actually been consolidated. (Use reverse side of this form if necessary.) _____

No allowable will be assigned to the well until all interests have been consolidated (by communitization, unitization, forced-pooling, or otherwise) or until a non-standard unit, eliminating such interests, has been approved by the Commission.



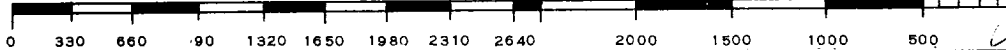
CERTIFICATION

I hereby certify that the information contained herein is true and complete to the best of my knowledge and belief.

Name Burns H. Dea
Position Production Manager
Company Flag-Redfern Oil Company
Date 11-9-72

I hereby certify that the well location shown on this plat was plotted from field notes of actual surveys made by me or under my supervision, and that the same is true and correct to the best of my knowledge and belief.

Date Surveyed 11-8-72
Registered Professional Engineer and/or Land Surveyor [Signature]
Certificate No. 754



RECEIVED

1 12 1972

**OIL CONSERVATION COMM.
HOBBS, N. M.**

Flag-Redfern

O I L C O M P A N Y

410 WALL TOWERS WEST • MIDLAND, TEXAS 79701

P. O. BOX 23 • PHONE (915) 683-5134

November 9, 1972

FILE:

U. S. Department of Interior
Geological Survey
Post Office Box 1157
Hobbs, New Mexico 88240

Attention: Mr. Arthur Brown

Re: Flag-Redfern Oil Company
Bilbrey "51" #1
Section 23, 9S, 37E
Lea County, New Mexico

Gentlemen:

The following is a Development Plan for Surface Use as required to accompany application to drill the captioned well:

- 1) State Highway 125 from Tatum, New Mexico to Bledsoe, Texas crosses Section 24, one mile east of the captioned location. Existing caliche lease roads provide access to the center of Section 24.
- 2) Access road to captioned well will be an extension of the existing lease roads 2640 feet to the west into Section 23 and 660 feet south to the location.
- 3) Additional lateral roads in Section 23 will be required if development proceeds in this section.
- 4) The planned access road will be the only road into the lease.
- 5) It is anticipated that the tank battery will be installed in the southeast corner of the drilling pad, the size and number of tanks and separators to be determined after the well is completed.
- 6) There is no known supply of drilling water in the immediate area and we consequently plan to haul drilling water into this location.
- 7) All solid waste from the drilling operation will be either buried or hauled away.
- 8) Produced brine will be stored in tanks and be trucked by permit into an approved subsurface disposal zone.

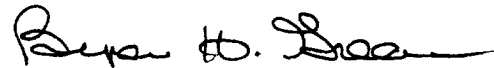
U. S. Department of Interior
November 9, 1972
Page two of two

- 9) Casinghead gas will be contracted to either Warren Petroleum Corporation or Cities Service Gas Company. Contracts will be requested of these companies immediately upon completion.
- 10) Location layout and rig plan are detailed on the attached development plat.
- 11) Should this be a dry hole, the pits will be filled and the surface restored as near as possible to the original contours. Should this well produce, pits will be filled and leveled and the pad maintained during the life of production.

Please advise if we can furnish any additional information that you might desire.

Yours very truly,

FLAG-REDFERN OIL COMPANY



Byron H. Greaves
Production Manager

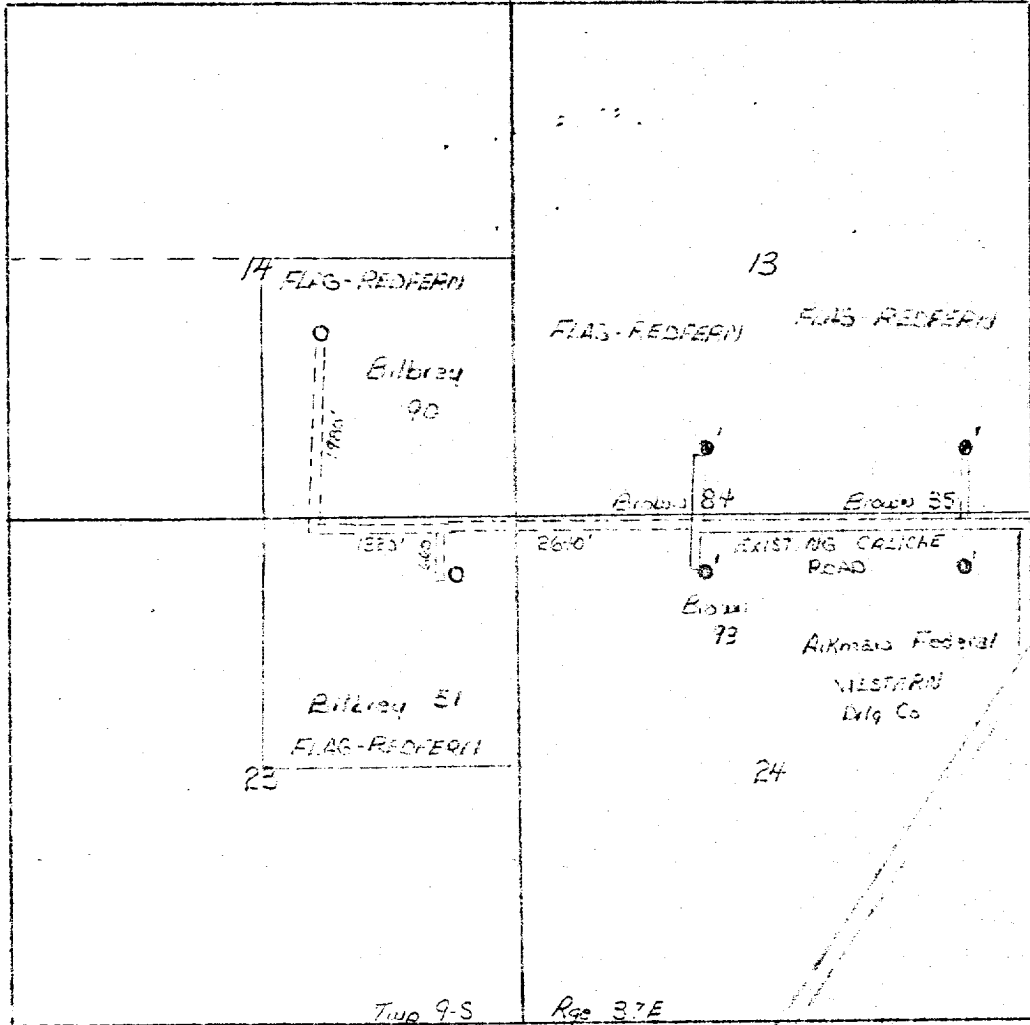
BHG:elf

Attachments

DEVELOPMENT PLAN FOR

SURFACE USE

FLAG - REDFERN OIL COMPANY
 SAUDYER SAN ANTONIO FIELD
 DEER COUNTY, NEW MEXICO



BLEDSON



FAD DETAIL

TATUM

