

NEW MEXICO OIL CONSERVATION COMMISSION
WELL LOCATION AND ACREAGE DEDICATION PLAT

Form O-107
Supplies 11-75
Effective 11-65

Number of Acres to Show the Outer Boundaries of the Section

SOUTHERN UNION PRODUCTION COMPANY		TENNECO STATE		Well No. 1
I	1	11 South	34 East	Lea
2310	South	330	East	
4201				Dedicated Acres 40

1. Outline the acreage dedicated to the subject well by colored pencil or hachure marks on the plat below.

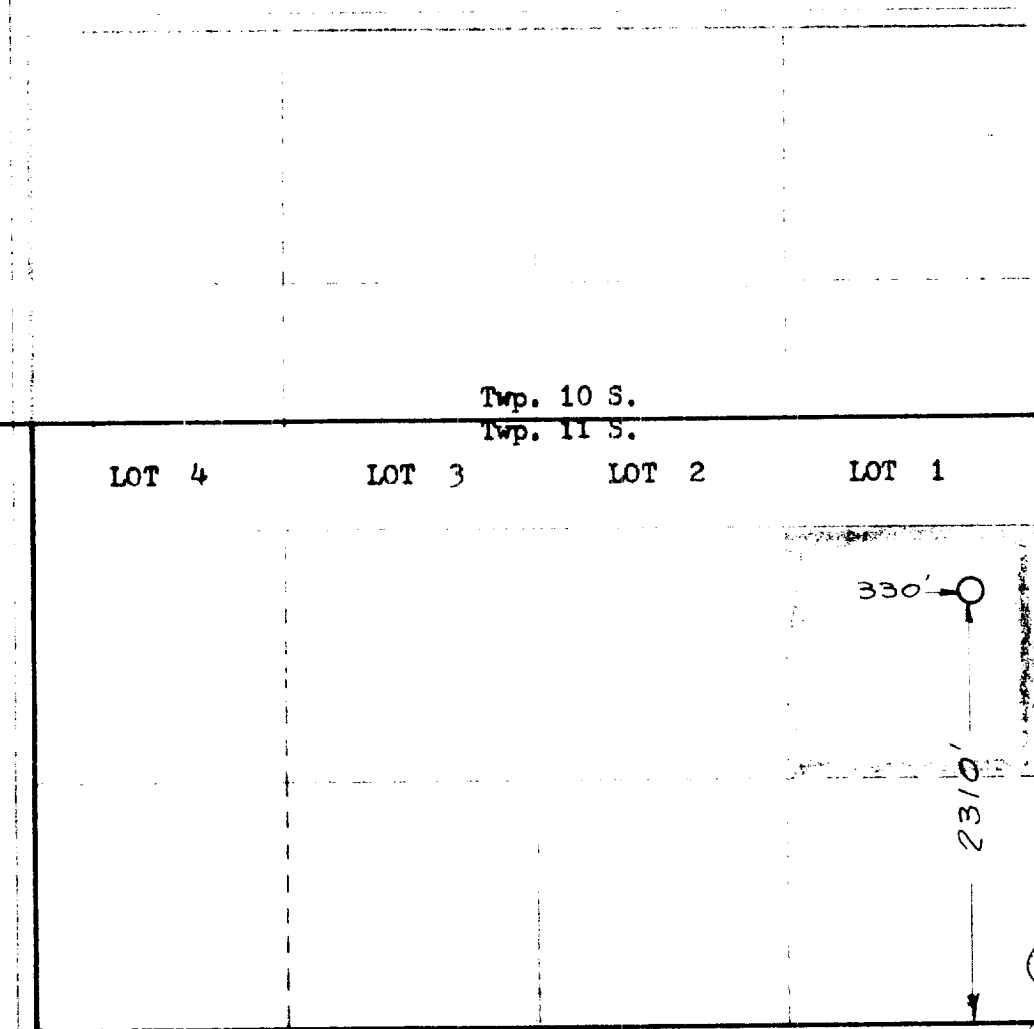
If more than one lease is dedicated to the well, outline each and identify the ownership thereof (both as to working interest and royalty).

2. If more than one lease of different ownership is dedicated to the well, have the interests of all owners been consolidated by communitization, unitization, force pooling, etc.?

Yes No If answer is "Yes," type of consolidation _____

If answer is "No," list the owners and tract descriptions which have actually been consolidated. (Use reverse side of this form if necessary.) _____

3. If the well will be assigned to the well until all interests have been consolidated (by communitization, unitization, force pooling, or otherwise) or until a non-standard unit, eliminating such interests, has been approved by the Commission _____



CERTIFICATION

I hereby certify that the information contained herein is true and complete to the best of my knowledge and belief

Name *Madison J. Boyley*
Position

Operations Supervisor

Company **Southern Union Production Company**

Date **November 17, 1975**

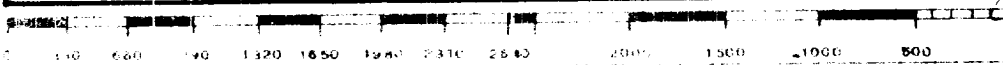
I hereby certify that the well location shown on this plat was plotted from field notes of actual surveys made by me or under my supervision, and that the same is true and correct to the best of my knowledge and belief.

Date Surveyed **November 14, 1975**

Registered Professional Engineer and/or Land Surveyor

W. W. Shear

Certificate No. **1559**



ELF

THE UNIVERSITY OF CHICAGO

LIBRARY

540 EAST 58TH STREET
CHICAGO, ILL. 60637