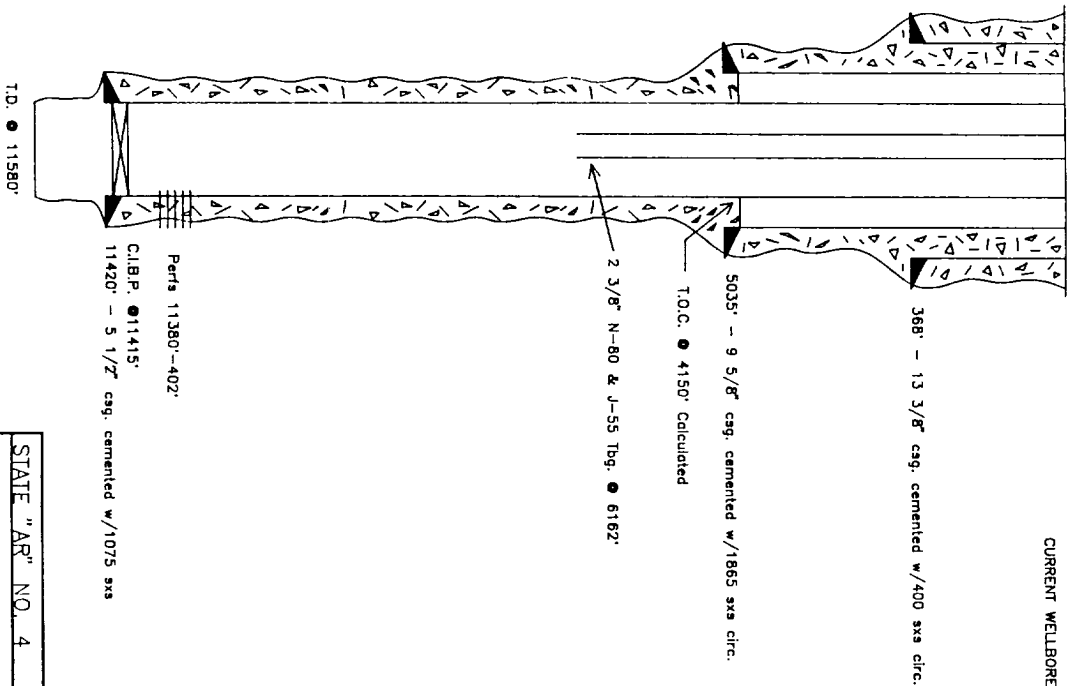


Elev. 3961' K.B. +18'

Lynx Petroleum

3/18/91

CURRENT WELLBORE STATUS



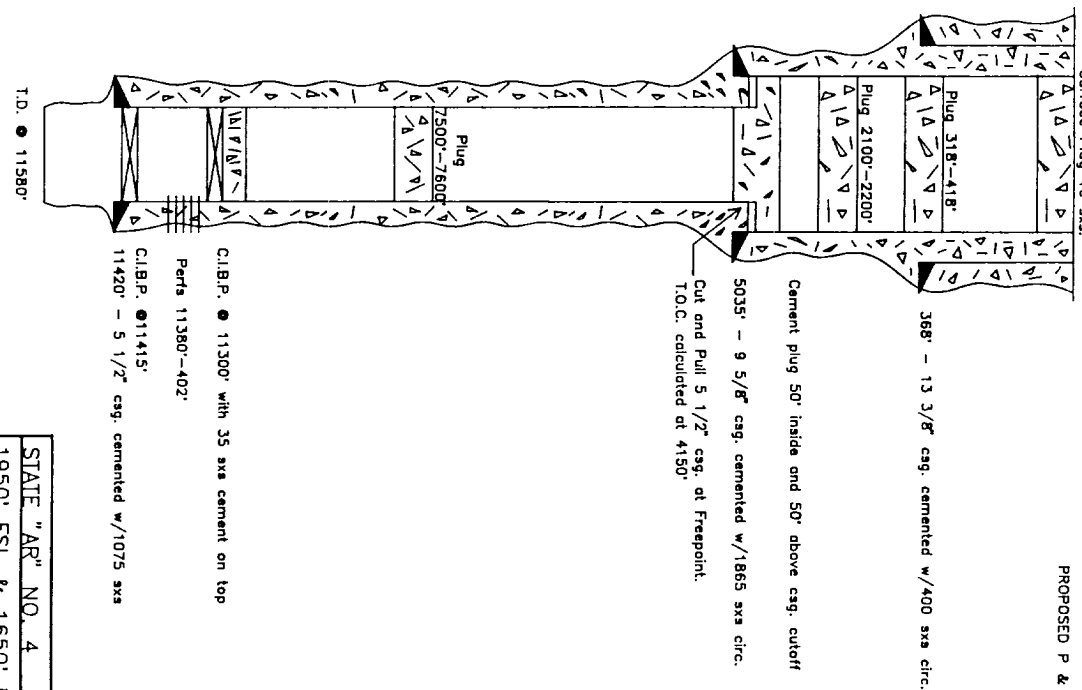
STATE "AR" NO. 4  
 1950' FSL & 1650' FWL  
 Sec. 2, T-11S, R-37E, Lea Co.

Elev. 3961' K.B. +18'

Lynx Petroleum

3/18/91

PROPOSED P & A



STATE "AR" NO. 4  
 1950' FSL & 1650' FWL  
 Sec. 2, T-11S, R-37E, Lea Co.