

NEW MEXICO OIL CONSERVATION COMMISSION
WELL LOCATION AND ACREAGE DEDICATION PLAT

Fbrr C-102
Supersedes C-128
Effective 1-1-65

All distances must be from the outer boundaries of the Section.

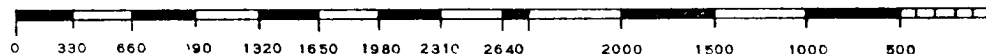
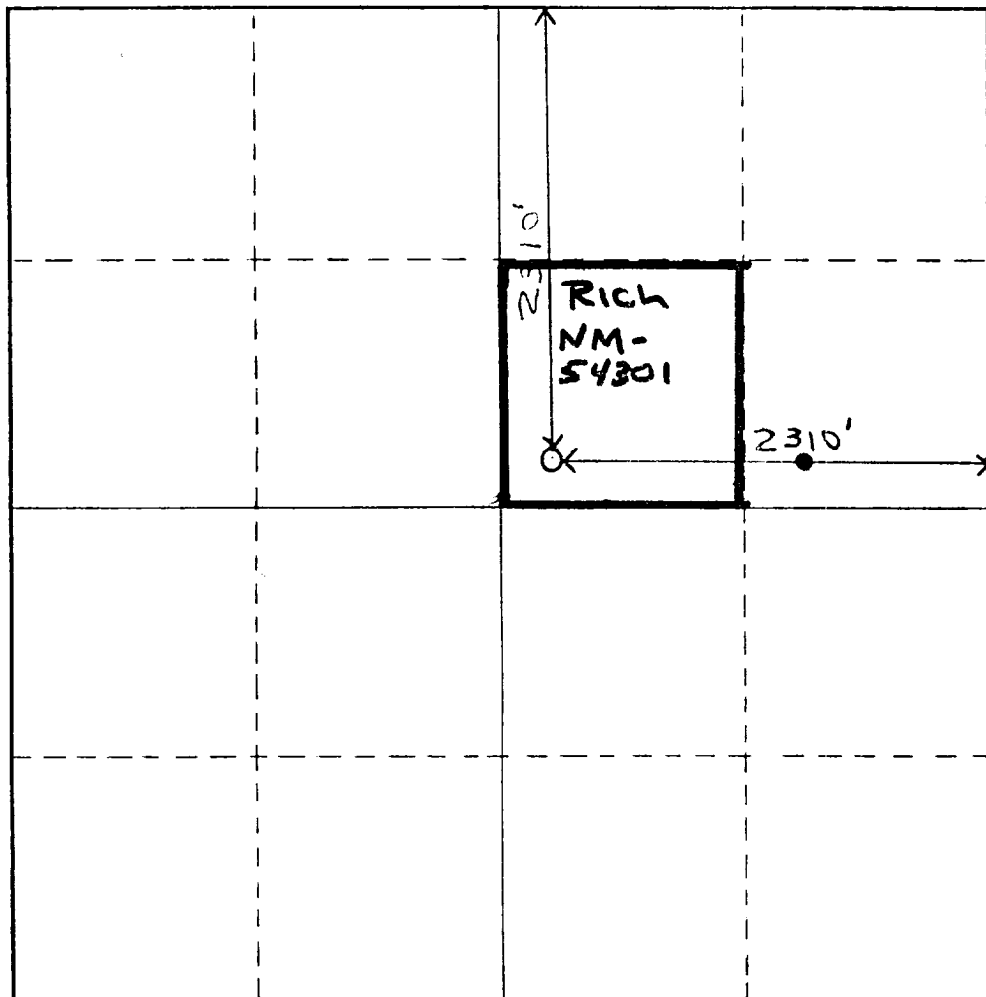
Operator Yates Drilling Company			Lease Rich Federal			Well No. 1		
Unit Letter G	Section 27	Township 12	Range 31	County Chaves				
Actual Footage Location of Well: 2310 feet from the North line and 2310 feet from the East line								
Ground Level Elev. 4435.6'	Producing Formation Queen			Pool SE CHAVES QUEEN GAS AREA ASSOC.			Dedicated Acreage: 40 Acres	

1. Outline the acreage dedicated to the subject well by colored pencil or hachure marks on the plat below.
2. If more than one lease is dedicated to the well, outline each and identify the ownership thereof (both as to working interest and royalty).
3. If more than one lease of different ownership is dedicated to the well, have the interests of all owners been consolidated by communitization, unitization, force-pooling, etc?

Yes No If answer is "yes," type of consolidation _____

If answer is "no," list the owners and tract descriptions which have actually been consolidated. (Use reverse side of this form if necessary.) _____

No allowable will be assigned to the well until all interests have been consolidated (by communitization, unitization, forced-pooling, or otherwise) or until a non-standard unit, eliminating such interests, has been approved by the Commission.



CERTIFICATION

I hereby certify that the information contained herein is true and complete to the best of my knowledge and belief.

Cy Cowan

Name
CY COWAN
Position
Regulatory Agent
Company
Yates Drilling Co.
Date
11-26-84

I hereby certify that the well location shown on this plat was plotted from field notes of actual surveys made by me or under my supervision, and that the same is true and correct to the best of my knowledge and belief.

11-23-84
Date
STATE OF NEW MEXICO
Registered Professional Engineer and Land Surveyor
3640
Roland Surber
Certification No. 3640