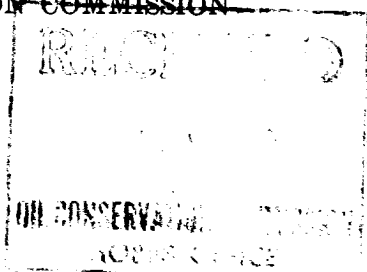


NEW MEXICO OIL CONSERVATION COMMISSION

Santa Fe, New Mexico

WELL RECORD



Mail to Oil Conservation Commission, Santa Fe, New Mexico, or its proper agent not more than twenty days after completion of well. Follow instructions in the Rules and Regulations of the Commission. Indicate questionable data by following it with (?). SUBMIT IN TRIPLICATE.

AREA 640 ACRES
LOCATE WELL CORRECTLY

The Texas Company

State of New Mexico "AU"

Well No. 1 Company or Operator Lease
in NW 1/4 of Sec. 29, T. 14-S
R. 32-E, N. M. P. M., Wildcat Field, Lea County.
Well is 660 feet south of the North line and 660 feet East West of the East line of Section 29
If State land the oil and gas lease is No. B-9214 Assignment No. - - -
If patented land the owner is - - - Address - - -
If Government land the permittee is - - - Address - - -
The Lessee is The Texas Company Address Houston, Texas
Drilling commenced May 27 19 51 Drilling was completed April 7 19 52
Name of drilling contractor Cactus Drilling Company Address San Angelo, Texas
Elevation above sea level at top of casing 4359(DF) feet.
The information given is to be kept confidential until - - - - - 19 -

OIL SANDS OR ZONES

No. 1, from - - - to - - - No. 4, from - - - to - - -
No. 2, from - - - to - - - No. 5, from - - - to - - -
No. 3, from - - - to - - - No. 6, from - - - to - - -

IMPORTANT WATER SANDS

Include data on rate of water inflow and elevation to which water rose in hole.

No. 1, from - - - - - to - - - - - feet.
No. 2, from - - - - - to - - - - - feet.
No. 3, from - - - - - to - - - - - feet.
No. 4, from - - - - - to - - - - - feet.

CASING RECORD

SIZE	WEIGHT PER FOOT	THREADS PER INCH	MAKE	AMOUNT	KIND OF SHOE	CUT & FILLED FROM	PERFORATED FROM	PERFORATED TO	PURPOSE
13-3/8	48#	8R	SMLS	348	Baker	- -	-	-	- -
8-5/8	32#	8R	SMLS	3957	Larkin	- -	-	-	- -
5-1/2	17#	8R	SMLS	9848	HOWCO	- -	-	-	- -

MUDDING AND CEMENTING RECORD

SIZE OF HOLE	SIZE OF CASING	WHERE SET	NO. SACKS OF CEMENT	METHOD USED	MUD GRAVITY	AMOUNT OF MUD USED
17-1/4	13-3/8	362	400	HOWCO	- -	- -
11-3/4	8-5/8	3970	2400	HOWCO	- -	- -
7-7/8	5-1/2	9860	200	HOWCO	- -	- -

PLUGS AND ADAPTERS

Heaving plug—Material - - - Length - - - Depth Set - - -
Adapters—Material - - - Size - - -

RECORD OF SHOOTING OR CHEMICAL TREATMENT

SIZE	SIBILL USED	EXPLOSIVE OR CHEMICAL USED	QUANTITY	DATE	DEPTH SHOT OR TREATED	DEPTH CLEANED OUT
<u>- - -</u>	<u>- - -</u>	<u>- - -</u>	<u>- - -</u>	<u>- - -</u>	<u>- - -</u>	<u>- - -</u>

Results of shooting or chemical treatment - - - - -

RECORD OF DRILL-STEM AND SPECIAL TESTS

If drill-stem or other special tests or deviation surveys were made, submit report on separate sheet and attach hereto.

TOOLS USED

Rotary tools were used from 0 feet to 13500 feet, and from - - - feet to - - - feet.
Cable tools were used from - - - feet to - - - feet, and from - - - feet to - - - feet.

PRODUCTION

Put to producing Dry 19 -
The production of the first 24 hours was - - - barrels of fluid of which - - - % was oil; - - - % emulsion; - - - % water; and - - - % sediment. Gravity, Be - - -
If gas well, cu. ft. per 24 hours - - - Gallons gasoline per 1,000 cu. ft. of gas - - -
Rock pressure, lbs. per sq. in. - - -

EMPLOYEES

E.G. Halley Driller D.E. Churchill Driller
C.T. Reynolds Driller L.L. Livey Driller

FORMATION RECORD ON OTHER SIDE

I hereby swear or affirm that the information given herewith is a complete and correct record of the well and all work done on it so far as can be determined from available records.

Midland, Texas, April 23, 1952
Name [Signature]
Position District Superintendent
Representing The Texas Company
Address Box 1070, Midland, Texas

FORMATION RECORD

FROM	TO	THICKNESS IN FEET	FORMATION
0	70	70	Caliche & Surface Sand
70	163	93	Surface Sand
163	340	177	Sand
340	1439	1099	Red Bed
1439	1873	434	Red Bed & Anhy
1873	2271	398	Anhy & Salt
2271	2745	474	Anhy & Shale
2745	3074	329	Anhy & Gyp & Salt
3074	3416	342	Anhy & Salt
3416	3684	268	Anhy & Gyp
3684	3970	286	Anhy & Lime
3970	7474	3504	Lime
7474	7521	47	Lime & Shale
7521	8129	608	Shale
8129	8192	63	Shale & Shells
8192	8227	35	Shale & Gyp
8227	8262	35	Shale & Shells
8262	8294	32	Shale & Dolomite
8294	8345	51	Lime & Shale
8345	8369	24	Shale & Dolomite
8369	8421	52	Shale
8421	8456	35	Shale & Dolomite
8456	8486	30	Shale
8486	8636	150	Lime & Shale
8636	8640	4	Lime, Shale & Chert
8640	8672	32	Dolomite
8672	8710	38	Lime
8710	8885	175	Dolomite
8885	9353	468	Lime
9353	9390	37	Lime & Shale
9390	10048	658	Lime
10048	10072	24	Lime & Chert
10072	10131	59	Lime
10131	10146	15	Lime & Shale
10146	11412	1266	Lime
11412	12554	1142	Lime & Shale
12554	12763	209	Lime & Chert
12763	12983	220	Lime
12983	13213	230	Lime & Shale
13213	13234	21	Lime & Dolomite
13234	13500	266	Dolomite
	13500		Total Depth

All measurements from Rotary Table or 12' above ground.

DRILL STEM TESTS:

- DST #1: 9525-9650 Packer failed.
- DST #2: 9490-9650 Tool open 50 minutes. Recovered 8103' drilling mud.
- DST #3: 9710-9779 Tool open 3 hours. Gas to surface in 8 minutes. No fluid to surface. Recovered 4958' fluid 2630' heavy gas cut and slightly oil cut mud, 1910' free oil.
- DST #4: 9775-9779 Tool open 4 hours 20 minutes. Recovered 240' heavy oil and gas cut mud 1092' oil cut salt water.
- DST #5: 9860-10070 Tool open 1 hour. Recovered 125' drilling mud.
- DST #6: 13060-13145 Tool open 1 hour. Recovered 2500' of water blanket and 90' drlg. mud.
- DST #7: 13179-13145 Tool open 1 hour and 15 minutes. Recovered 2500' water blanket 20' drilling mud.
- DST #8: 13179-13250 Tool open 1 hour and 15 minutes. Recovered 2500' water blanket 10' mud.
- DST #9: 13240-13309 Tool failed. No test.
- DST #10: 13250-13309 Tool open 1 hour 15 minutes. Recovered 2668' water blanket 184' gas cut mud with slight show of oil.
- DST #11: 13309-13339 Tool open 1-1/2 hours. Recovered 2500' water blanket 80' drilling mud. No show of oil.
- DST #12: 13337-13412 Tool open 2 hours. Recovered 3152' fluid 2500' water blanket, 372' salt water, 180' drilling mud. No show of oil or gas.
- DST #13: 13411-13500 Tool open 3 hours. Recovered 6992' fluid 2500' water blanket, 4492' salt water.

PLUGGING RECORD

Using heavy mud between cement plugs, spotted the following plugs:
 25 sacks 13100'-13160'; 25 sacks 12335'-12405'; 20 sacks 11215'-11175';
 30 sacks 9885'-9835'; 20 sacks 9567'-9526'; 30 sacks 4465'-4365' (Cut off
 5-1/2" casing at 4465' and pulled same); 30 sacks 3895'-3935'; (Cut off
 3-5/8" casing at 600' and pulled same) 15 sacks top 13-3/8" casing.