

NEW MEXICO OIL CONSERVATION COMMISSION
 WELL LOCATION AND ACREAGE DEDICATION PLAT

Form C-102
 Supersedes C-128
 Effective 1-1-65

All distances must be from the center boundaries of the Section.

Jun 5 11 31 AM '68
 FEDERAL OFFICE OF O. C. C.

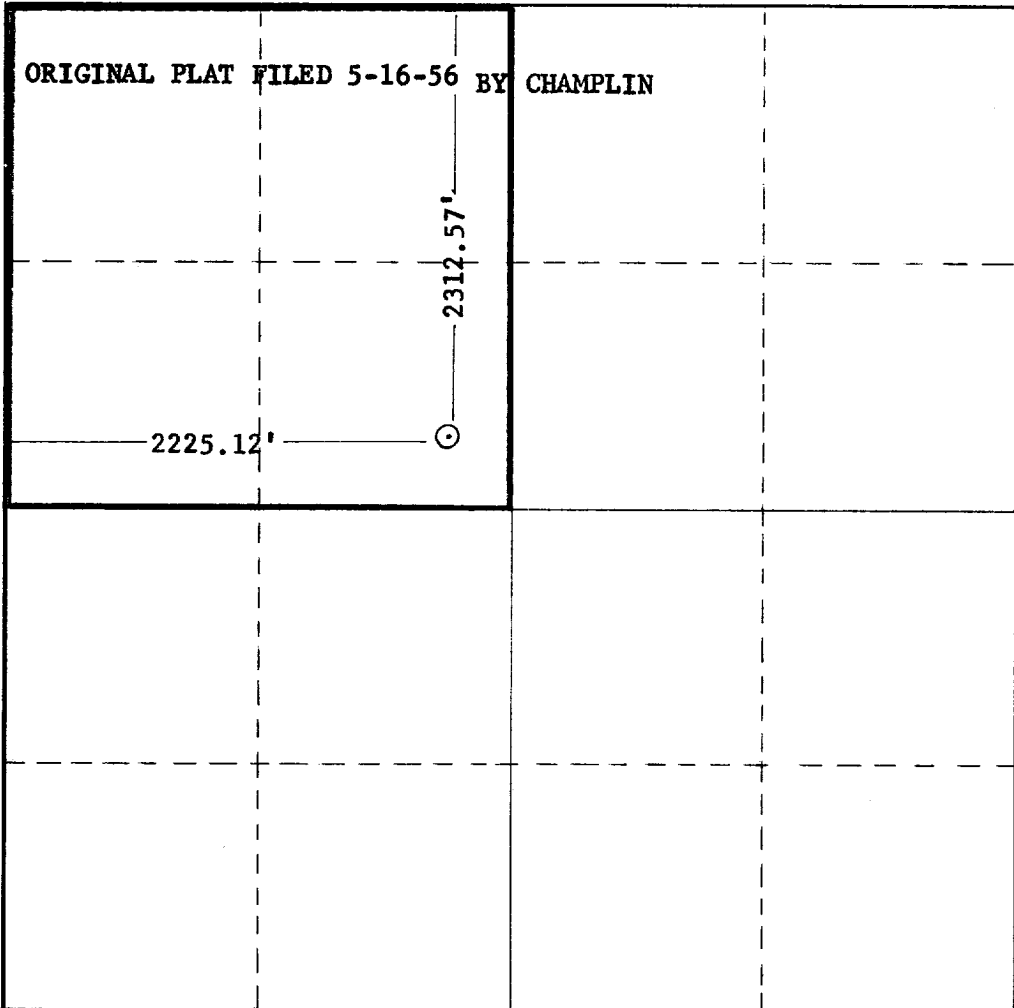
Operator Coastal States Gas Producing Company		Lease Federal 6		Well No. 1
Unit Letter F	Section 6	Township 14S	Range 33E	County Lea
Actual Footage Location of Well: 2312.57 feet from the north line and 2225.12 feet from the west line				
Ground Level Elev: 4290' DF	Producing Formation Upper Pennsylvanian	Pool Baum	Dedicated Acreage: 160 Acres	

1. Outline the acreage dedicated to the subject well by colored pencil or hachure marks on the plat below.
2. If more than one lease is dedicated to the well, outline each and identify the ownership thereof (both as to working interest and royalty).
3. If more than one lease of different ownership is dedicated to the well, have the interests of all owners been consolidated by communitization, unitization, force-pooling, etc?

Yes No If answer is "yes," type of consolidation By communitization, in progress.

If answer is "no," list the owners and tract descriptions which have actually been consolidated. (Use reverse side of this form if necessary.) _____

No allowable will be assigned to the well until all interests have been consolidated (by communitization, unitization, forced-pooling, or otherwise) or until a non-standard unit, eliminating such interests, has been approved by the Commission.



CERTIFICATION

I hereby certify that the information contained herein is true and complete to the best of my knowledge and belief.

Name: *Joe P. Howard*
 Position: **Division Production Superintendent**
 Company: **Coastal States Gas Producing Company**

Date: **June 3, 1968**

I hereby certify that the well location shown on this plat was plotted from field notes of actual surveys made by me or under my supervision, and that the same is true and correct to the best of my knowledge and belief.

Date Surveyed

Registered Professional Engineer and/or Land Surveyor

Certificate No.

