

31 12 1975

NEW MEXICO OIL CONSERVATION COMMISSION

Form C-101  
Revised 1-1-65

NO. OF COPIES RECEIVED	
DISTRIBUTION	
SANTA FE	
FILE	
U.S.G.S.	
LAND OFFICE	
OPERATOR	

5A. Indicate Type of Lease  
STATE  FEDERAL

5. State Oil or Gas Lease No.  
K-6678-1

APPLICATION FOR PERMIT TO DRILL, DEEPEN, OR PLUG BACK

1a. Type of Work  
DRILL  DEEPEN  PLUG BACK

b. Type of Well  
OIL WELL  GAS WELL  OTHER  SINGLE ZONE  MULTIPLE ZONE

2. Name of Operator  
Texaco Inc.

3. Address of Operator  
P. O. Box 3109, Midland, Texas 79701

4. Location of Well  
UNIT LETTER B LOCATED 810 FEET FROM THE North LINE  
AND 1980 FEET FROM THE East LINE OF SEC. 19 TWP. 12-S RGE. 34-E NMPM

7. Unit Agreement Name

8. Firm or Lease Name  
New Mexico "DP" State

9. Well No.

10. Field and Pool, or Unit  
Hightower (Lower Penn) East

17. County  
Lea

19. Proposed Depth  
10,400'

19A. Formation  
Lower Penn

20. Rotary or C.T.  
Rotary

21. Elevations (Show whether DP, RT, etc.)  
4199' Gr.

21A. Kind & Status Plug. Bond  
\$10,000 Blanket

21B. Drilling Contractor  
Unknown

22. Approx. Date Work will start  
At Once

PROPOSED CASING AND CEMENT PROGRAM

SIZE OF HOLE	SIZE OF CASING	WEIGHT PER FOOT	SETTING DEPTH	SACKS OF CEMENT	EST. TOP
15"	11 3/4"	42#	350'	*350	300% to Circulate
10 5/8"	8 5/8"	24#, 28#, 32#	4,200'	**950	150% to Tieback
7 7/8"	5 1/2"	17#	10,400'	***970	150% to Tieback

\*350 sx. Class "C" w/2% CaCl<sub>2</sub>, 14.8 ppg (300% to circulate - Cmt. must circulate)

\*\*750 sx. TLW w/5# Gilsonite/sx. (11.9 ppg) followed by 200 sx. Class "C" w/10# salt/sx. (15 ppg). (150% to Tieback) Not required to tieback.

\*\*800 sx. TLW w/5# Gilsonite/sx. (11.7 ppg) followed by 170 sx. Chem Comp expanding cement, 15.6 ppg, w/2% D82 (150% to tieback - Not required)

Blowout Preventer (See Exhibit "B").  
Will be installed after surface pipe set at 4200'.

APPROVAL VALID  
FOR 90 DAYS UNLESS  
DRILLING COMMENCED,

Formation Tops Expected	
San Andres 4050'	WC XX 9190
Glorietta 5500'	Bough "A" 9885
Tubb 6900'	Ranger Lake "A" 10195
Abo 7650'	Ranger Lake "B" 10285
	Total Depth 10400

IN ABOVE SPACE DESCRIBE PROPOSED PROGRAM IF PROPOSED TO DEEPEN OR PLUG BACK, GIVE DATA ON PRESENT PRODUCTIVE ZONE AND PROPOSED NEW PRODUCTIVE ZONE. GIVE BLOWOUT PREVENTER PROGRAM, IF ANY.

I hereby certify that the information above is true and complete to the best of my knowledge and belief.

Signed R. D. Tomberlin Title Assistant Division Petroleum Engineer Date December 30, 1975

(This space for State Use)

APPROVED BY [Signature] TITLE \_\_\_\_\_ DATE \_\_\_\_\_

CONDITIONS OF APPROVAL, IF ANY:

NEW MEXICO OIL CONSERVATION COMMISSION  
WELL LOCATION AND ACREAGE DEDICATION PLAT

Form C-102  
Supersedes C-128  
Effective 1-1-65

All distances must be from the outer boundaries of the Section.

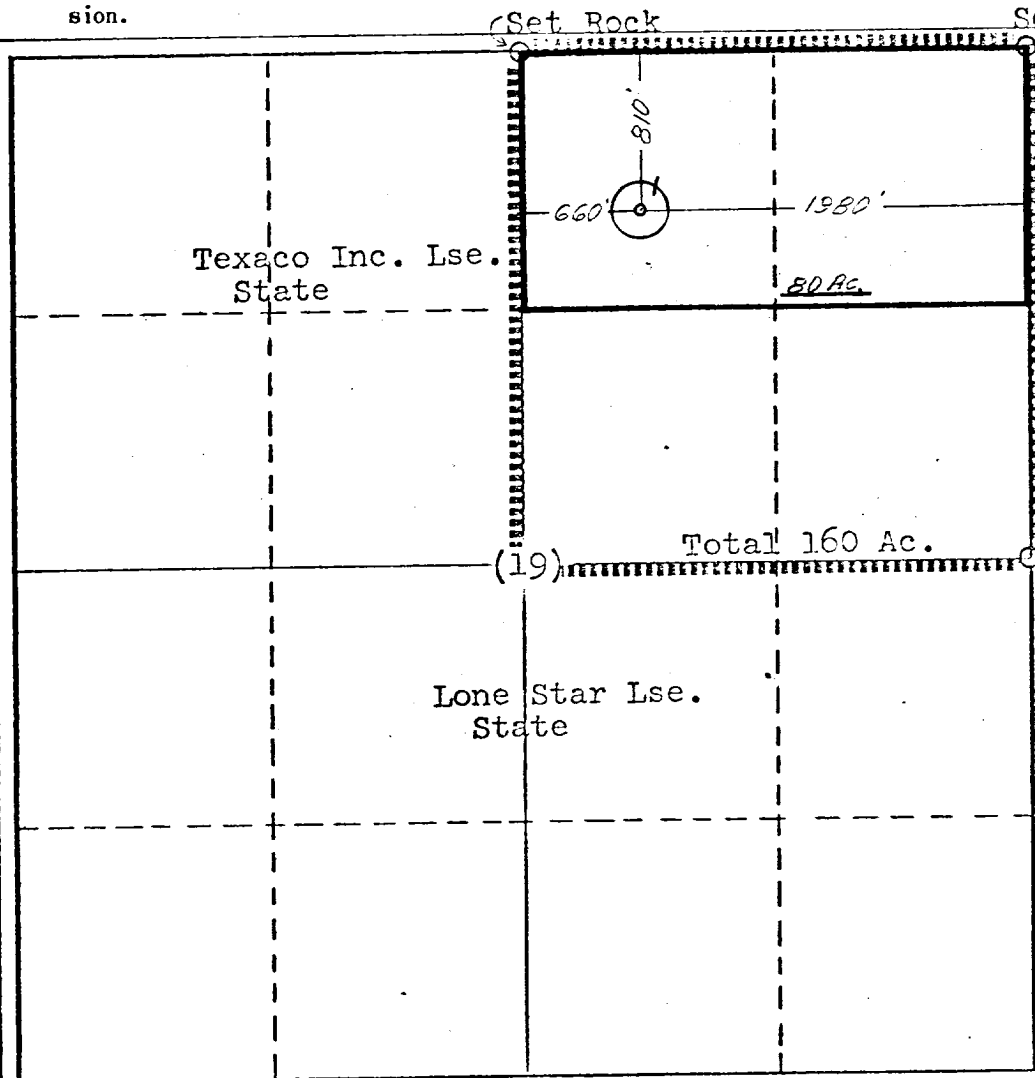
Operator <b>Texaco Inc.</b>		Location New Mexico "DP" State			Well No. <b>1</b>
Unit Letter <b>B</b>	Section <b>19</b>	Township <b>12: South</b>	Range <b>34 East</b>	County <b>Lea</b>	
Actual Footage Location of Well: <b>810</b> feet from the <b>North</b> line and <b>1980</b> feet from the <b>East</b> line <b>Sec. 19</b>					
Ground Level Elev. <b>4199</b>	Producing Formation <b>Lower Penn</b>	Pool <b>Hightower (Lower Penn) East</b>		Dedicated Acreage: <b>80</b>	Acres

1. Outline the acreage dedicated to the subject well by colored pencil or hachure marks on the plat below.
2. If more than one lease is dedicated to the well, outline each and identify the ownership thereof (both as to working interest and royalty).
3. If more than one lease of different ownership is dedicated to the well, have the interests of all owners been consolidated by communitization, unitization, force-pooling, etc?

Yes  No If answer is "yes," type of consolidation \_\_\_\_\_

If answer is "no," list the owners and tract descriptions which have actually been consolidated. (Use reverse side of this form if necessary.) \_\_\_\_\_

No allowable will be assigned to the well until all interests have been consolidated (by communitization, unitization, forced-pooling, or otherwise) or until a non-standard unit, eliminating such interests, has been approved by the Commission.



CERTIFICATION	
I hereby certify that the information contained herein is true and complete to the best of my knowledge and belief.	
Name	<b>B. L. Eiland</b>
Position	<b>Registered Land Surveyor</b>
Company	<b>Texaco Inc.</b>
Date	<b>December 30, 1975</b>
I hereby certify that the well location shown on this plat was plotted from field notes of actual surveys made by me or under my supervision, and that the same is true and correct to the best of my knowledge and belief.	
Date Surveyed	<b>December 29, 1975</b>
Registered Professional Engineer and/or Land Surveyor <b>B. L. Eiland</b>	
Certificate No.	<b>4386</b>

