

30-025-28540

NO. OF COPIES RECEIVED	
DISTRIBUTION	
SANTA FE	
FILE	
U.S.G.S.	
LAND OFFICE	
OPERATOR	

NEW MEXICO OIL CONSERVATION COMMISSION

Form C-101
Revised 1-1-65

5A. Indicate Type of Lease
STATE FEE

5. State Oil & Gas Lease No.

APPLICATION FOR PERMIT TO DRILL, DEEPEN, OR PLUG BACK

1a. Type of Work
b. Type of Well DRILL DEEPEN PLUG BACK
OIL WELL GAS WELL OTHER SINGLE ZONE MULTIPLE ZONE

2. Name of Operator
Mayne & Mertz, Inc.

3. Address of Operator
P.O. Box 183, Midland, Texas 79702

4. Location of Well
UNIT LETTER H LOCATED 2310 FEET FROM THE North LINE
AND 990 FEET FROM THE East LINE OF SEC. 7 TWP. 13-S RGE. 36-E NMPM

7. Unit Agreement Name
Harton-State ~~TRIE~~

8. Farm or Lease Name
Tatum Wolfcamp

9. Well No.
1

10. Field and Pool, or Wildcat
Tatum Wolfcamp

12. County
Lea

19. Proposed Depth
10500'

19A. Formation
Wolfcamp

20. Rotary or C.T.
Rotary

21. Elevations (Show whether DF, RT, etc.)
4003.5' GL

21A. Kind & Status Plug. Bond
One-well (\$10,000)

21B. Drilling Contractor
Undesignated

22. Approx. Date Work will start
1/9/84

PROPOSED CASING AND CEMENT PROGRAM

SIZE OF HOLE	SIZE OF CASING	WEIGHT PER FOOT	SETTING DEPTH	SACKS OF CEMENT	EST. TOP
17 1/2"	13 3/8"	54.5#	350'	circulate	G.L.
12 1/4"	8 5/8"	32 & 24#	4,500'	625	2000'
7 7/8"	5 1/2"	17 & 15.5#	10,500'	450	7000'

Cement must tie back
into 138 casing

- Attached are:
1. Well Location and Acreage Dedication Plat
 2. Blowout Preventer Diagram
 3. One-well Plugging Bond

APPROVAL VALID FOR 180 DAYS
PERMIT EXPIRES 7/19/84
UNLESS DRILLING UNDERWAY

IN ABOVE SPACE DESCRIBE PROPOSED PROGRAM; IF PROPOSAL IS TO DEEPEN OR PLUG BACK, GIVE DATA ON PRESENT PRODUCTIVE ZONE AND PROPOSED NEW PRODUCTIVE ZONE. GIVE BLOWOUT PREVENTER PROGRAM, IF ANY.

I hereby certify that the information above is true and complete to the best of my knowledge and belief.

Signed [Signature] Title President Date December 12, 1983

ORIGINAL SIGNED BY EDDIE SEAY

APPROVED BY OIL & GAS INSPECTOR TITLE _____ DATE JAN 19 1984

CONDITIONS OF APPROVAL, IF ANY:

DEC 20 1983

O.C.D.

HOBBS OFFICE

NEW MEXICO OIL CONSERVATION COMMISSION
WELL LOCATION AND ACREAGE DEDICATION PLAT

Form C-102
Supersedes C-128
Effective 1-1-85

All distances must be from the outer boundaries of the Section.

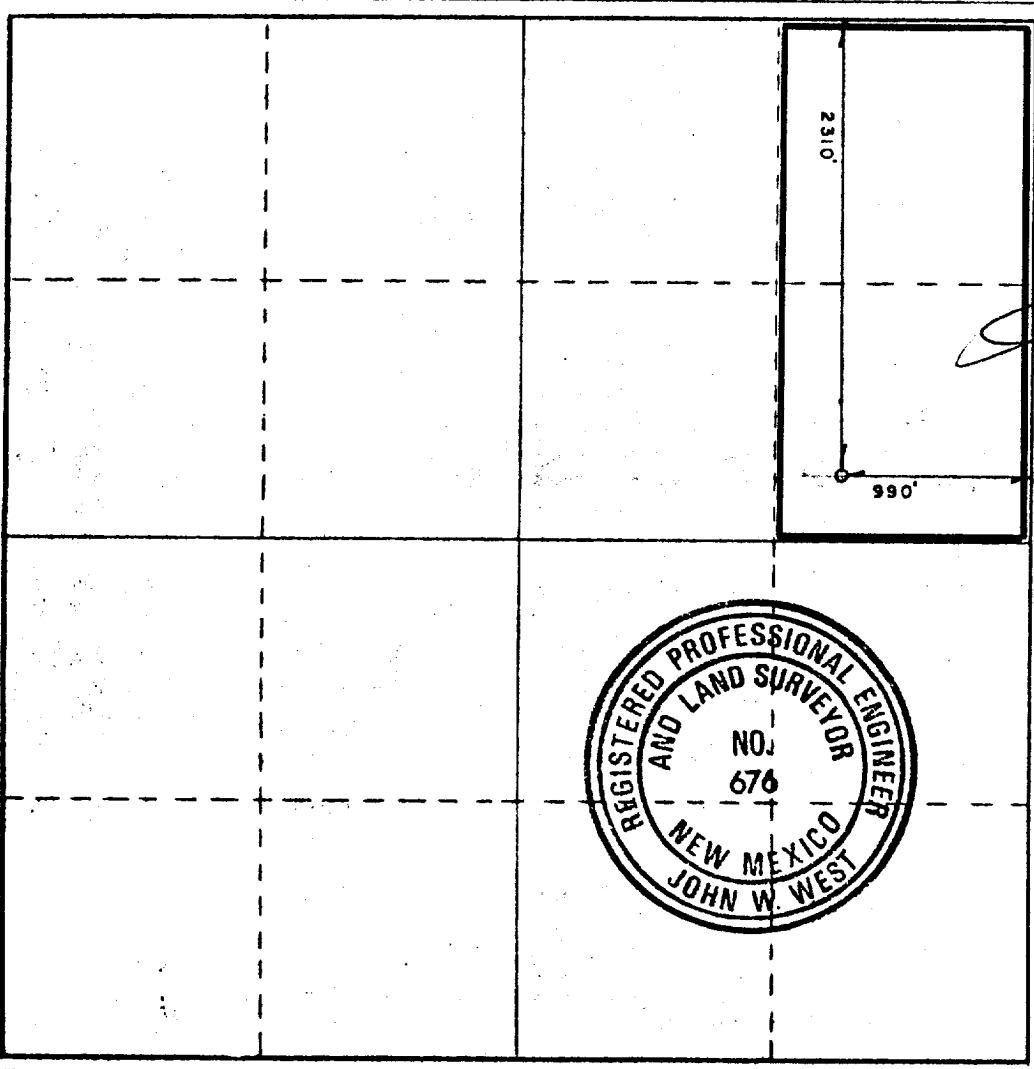
Operator MAYNE & MERTZ, INC.		Lease HARTON STATE UNIT			Well No. 1
Unit Letter H	Section 7	Township 13 SOUTH	Range 36 EAST	County LEA	
Actual Footage Location of Well: 2310 feet from the NORTH line and 990 feet from the EAST line					
Ground Level Elev. 4003.5	Producing Formation WOLFCAMP	Pool TATUM WOLFCAMP	Dedicated Acreage: 80 Acres		

1. Outline the acreage dedicated to the subject well by colored pencil or hachure marks on the plat below.
2. If more than one lease is dedicated to the well, outline each and identify the ownership thereof (both as to working interest and royalty).
3. If more than one lease of different ownership is dedicated to the well, have the interests of all owners been consolidated by communitization, unitization, force-pooling, etc?

Yes No If answer is "yes," type of consolidation _____

If answer is "no," list the owners and tract descriptions which have actually been consolidated. (Use reverse side of this form if necessary.) _____

No allowable will be assigned to the well until all interests have been consolidated (by communitization, unitization, forced-pooling, or otherwise) or until a non-standard unit, eliminating such interests, has been approved by the Commission.



CERTIFICATION

I hereby certify that the information contained herein is true and complete to the best of my knowledge and belief.

Name
Stylo Mayne
PRESIDENT

Company
MAYNE & MERTZ, INC.

Date
DECEMBER 12, 1983

I hereby certify that the well location shown on this plat was plotted from field notes of actual surveys made by me or under my supervision, and that the same is true and correct to the best of my knowledge and belief.

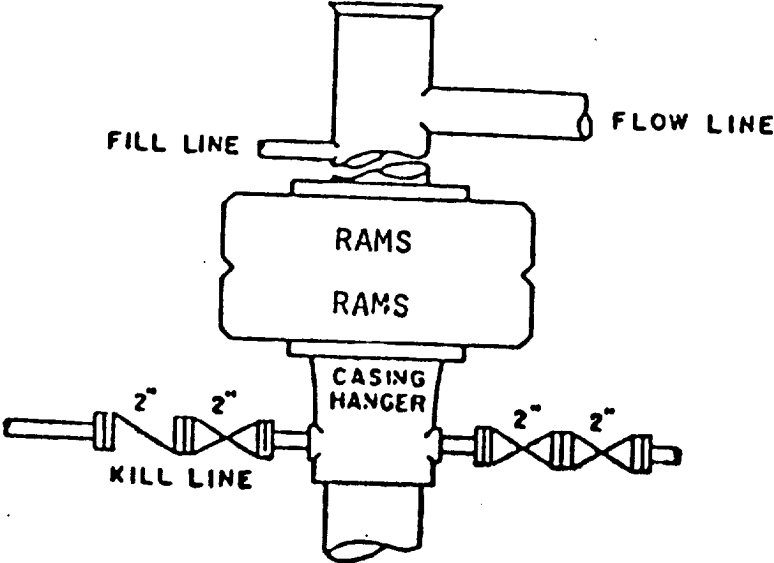
Date Surveyed
DECEMBER 8, 1983

Registered Professional Engineer and/or Land Surveyor
John W. West

Certificate No.
171



BLOWOUT PREVENTER SKETCH
Mayne & Mertz, Inc.
HARTON-STATE UNIT NO. 1



26/12/83

DEC 20 1983

11

O.C.D.
HOBBS OFFICE