

State of New Mexico  
Energy, Minerals and Natural Resources Department

Form C-105  
Revised 1-1-89

Submit to Appropriate District Office  
State Lease - 6 copies  
Fee Lease - 5 copies  
DISTRICT I  
P.O. Box 1980, Hobbs, NM 88240

DISTRICT II  
P.O. Drawer DD, Artesia, NM 88210

DISTRICT III  
1000 Rio Brazos Rd., Aztec, NM 87410

**OIL CONSERVATION DIVISION**  
2040 Pacheco St.  
Santa Fe, NM 87505

WELL API NO. 30-0 2534922

5. Indicate Type of Lease  
STATE  FEE

6. State Oil & Gas Lease No.

**WELL COMPLETION OR RECOMPLETION REPORT AND LOG**

1a. Type of Well: OIL WELL  GAS WELL  DRY  OTHER \_\_\_\_\_  
b. Type of Completion: NEW WELL  WORK OVER  DEEPEN  PLUG BACK  DIFF RESVR  OTHER \_\_\_\_\_

7. Lease Name or Unit Agreement Name  
BURRUS

2. Name of Operator  
Ricks Exploration, Inc.

8. Well No. 1

3. Address of Operator  
210 Park Ave., 3000 Oklahoma Tower, Oklahoma City, OK

9. Pool name or Wildcat  
TRINITY - WOLFCAMP

4. Well Location  
Unit Letter 0 : 900' Feet From The South Line and 1859' Feet From The East Line  
Section 22 Township 12S Range 38E NMPM Lea County

10. Date Spudded 4/11/00  
11. Date T.D. Reached 5/26/00  
12. Date Compl. (Ready to Prod.) 6/29/00  
13. Elevations (DF & RKB, RT, GR, etc.) GL: 3798' KB: 3815.5'  
14. Elev. Casinghead

15. Total Depth 12036'  
16. Plug Back T.D. 9200'  
17. If Multiple Compl. How Many Zones?  
18. Intervals Drilled By Rotary Tools Cable Tools  
x

19. Producing Interval(s), of this completion - Top, Bottom, Name  
Wolfcamp  
20. Was Directional Survey Made No

21. Type Electric and Other Logs Run as before: DI, DA, Densilog  
22. Was Well Cored No

**23. CASING RECORD (Report all strings set in well)**

CASING SIZE	WEIGHT LB/FT.	DEPTH SET	HOLE SIZE	CEMENTING RECORD	AMOUNT PULLED
13-3/8"	48#	387.87'	17 1/2"	360 sx/C	
9-5/8"	36#/40#	4516.00'	12 1/4"	1270 sx/C	
5 1/2"	17#	12031.00'	7-7/8"	730 sx/C/POZ	

24. LINER RECORD					25. TUBING RECORD		
SIZE	TOP	BOTTOM	SACKS CEMENT	SCREEN	SIZE	DEPTH SET	PACKER SET
					2 7/8	9159.66	

26. Perforation record (interval, size, and number) 9002-9031'	27. ACID, SHOT, FRACTURE, CEMENT, SQUEEZE, ETC.	
	DEPTH INTERVAL	AMOUNT AND KIND MATERIAL USED
	9002-31'	1000 gal 15% NEFE HCL

**28. PRODUCTION**

Date First Production 6/29/00	Production Method (Flowing, gas lift, pumping - Size and type pump) Pumping- RHEM pump				Well Status (Prod. or Shut-in) Producing		
Date of Test 2/28/01	Hours Tested 24	Choke Size	Prod'n For Test Period	Oil - Bbl. 220	Gas - MCF 147	Water - Bbl. 0	Gas - Oil Ratio 668:1
Flow Tubing Press.	Casing Pressure	Calculated 24-Hour Rate	Oil - Bbl. 220	Gas - MCF 147	Water - Bbl. 0	Oil Gravity - API - (Corr.) 42.5	

29. Disposition of Gas (Sold, used for fuel, vented, etc.)  
Sold  
Test Witnessed By  
Nick Newland

30. List Attachments  
C104, C102

31. I hereby certify that the information shown on both sides of this form is true and complete to the best of my knowledge and belief

Signature Lynne Suchy Printed Name Lynne Suchy Title Drilling Asstnt Date 3/16/01

2# Trinity Devonian

DISTRICT I  
P.O. Box 1900, Hobbs, NM 88341-1900

State of New Mex  
Energy, Minerals and Natural Resources Department

Form C-1  
Revised February 10, 19  
Submit to Appropriate District Offi  
State Lease - 4 Copi  
Fee Lease - 3 Copi

DISTRICT II  
P.O. Drawer DD, Artesia, NM 88211-0719

DISTRICT III  
1000 Rio Brazos Rd., Artec, NM 87410

DISTRICT IV  
P.O. BOX 2088, SANTA FE, N.M. 87504-2088

OIL CONSERVATION DIVISION  
P.O. Box 2088  
Santa Fe, New Mexico 87504-2088

AMENDED REPORT

WELL LOCATION AND ACREAGE DEDICATION PLAT

API Number	Pool Code	Pool Name
	59890	TRINITY-WOLFCAMP
Property Code	Property Name	Well Number
25306	BURRIS	1
OGRID No.	Operator Name	Elevation
168489	RICKS EXPLORATION INC.	3798

Surface Location

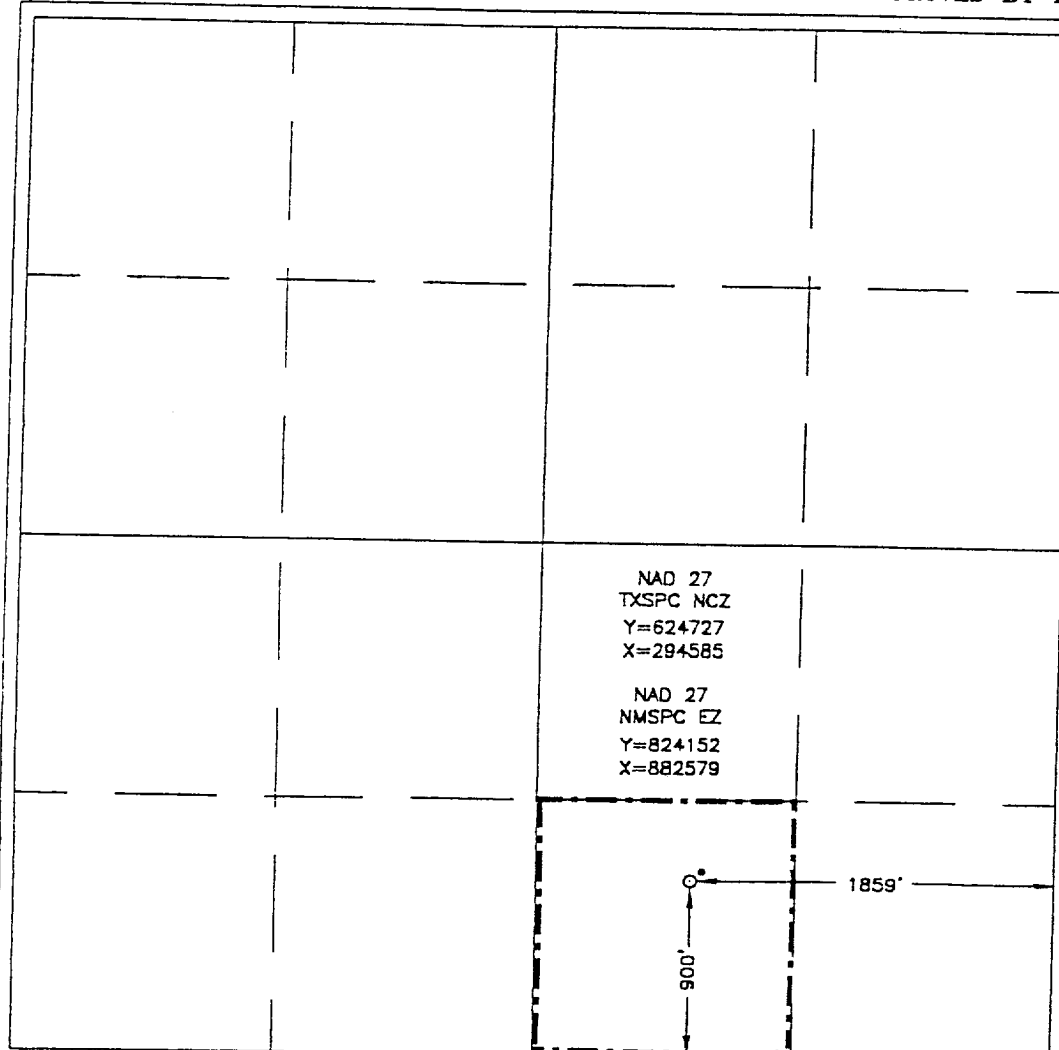
UL or lot No.	Section	Township	Range	Lot Idn	Feet from the	North/South line	Feet from the	East/West line	County
0	22	12 S	38E		900	SOUTH	1859	EAST	LEA

Bottom Hole Location If Different From Surface

UL or lot No.	Section	Township	Range	Lot Idn	Feet from the	North/South line	Feet from the	East/West line	County

Dedicated Acres	Joint or Infill	Consolidation Code	Order No.
40			

NO ALLOWABLE WILL BE ASSIGNED TO THIS COMPLETION UNTIL ALL INTERESTS HAVE BEEN CONSOLIDATED OR A NON-STANDARD UNIT HAS BEEN APPROVED BY THE DIVISION



OPERATOR CERTIFICATION

I hereby certify that the information contained herein is true and complete to the best of my knowledge and belief.

*Joe T. Jenica*  
Signature

Joe T. Jenica

Printed Name  
Agent

Title  
Date  
01/02/01

Date

SURVEYOR CERTIFICATION

I hereby certify that the well location shown on this plat was plotted from field notes of actual surveys made by me or under my supervision, and that the same is true and correct to the best of my belief.

JANUARY 26, 2000

Date Surveyed LMP

Signature & Seal of  
Professional Surveyor

*Ronald J. Edson* 1-27-2000  
00-11-0073

Certificate No. RONALD J. EDSON 3239  
GARY EDSON 12641  
MACON McDONALD 12186