

20-041-20603

NO. OF COPIES RECEIVED		
DISTRIBUTION		
SANTA FE		
FILE		
U.S.G.S.		
LAND OFFICE		
OPERATOR		

NEW MEXICO OIL CONSERVATION COMMISSION

Form C-101
Revised 1-1-65

5A. Indicate Type of Lease
STATE FEE

5. State Oil & Gas Lease No.

APPLICATION FOR PERMIT TO DRILL, DEEPEN, OR PLUG BACK

1a. Type of Work
b. Type of Well DRILL DEEPEN PLUG BACK
OIL WELL GAS WELL OTHER SINGLE ZONE MULTIPLE ZONE

7. Unit Agreement Name

8. Farm or Lease Name
Wilson

2. Name of Operator
Enserch Exploration, Inc.

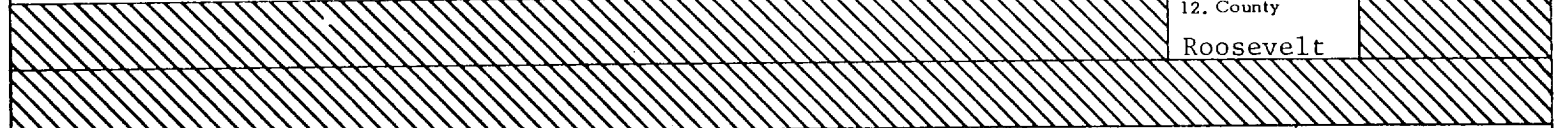
9. Well No.
1

3. Address of Operator
1230 River Bend Drive - Suite 136 - Dallas, Texas 75247

10. Field and Pool, or Wildcat
Undesignated

4. Location of Well UNIT LETTER F LOCATED 1980 FEET FROM THE North LINE
AND 1970 FEET FROM THE West LINE OF SEC. 6 TWP. 5-S RGE. 33-E NMPM

12. County
Roosevelt



19. Proposed Depth 8350'
19A. Formation Mississippian Lm
20. Rotary or C.T. Rotary

21. Elevations (Show whether DF, RT, etc.) 4502.1 GL
21A. Kind & Status Plug. Bond American Insurance 5171534
21B. Drilling Contractor Republic Drilling Co.
22. Approx. Date Work will start July 1, 1981

PROPOSED CASING AND CEMENT PROGRAM

SIZE OF HOLE	SIZE OF CASING	WEIGHT PER FOOT	SETTING DEPTH	SACKS OF CEMENT	EST. TOP
17-1/2"	13-3/8"	48#	350'	400	Circ. Surface
12-1/4"	9-5/8"	36#	2000'	1150	Circ. Surface
8-3/4"	5-1/2"	15.5# & 17.0#	8350'	1000	6000'

Drill to 8350' in search of oil. Will set 13-3/8" surface casing. A 13-3/8" 3000 psi bradenhead and a 12", 3000 psi BOP will be installed before drilling the intermediate hole. After 9-5/8" casing is set, a 9-5/8" 3000 psi bradenhead will be installed. A 12", 3000 psi double hydraulic BOP and a 12", 3000 psi Hydril will be used from 2000' to total depth.

APPROVAL VALID FOR 180 DAYS
PERMIT EXPIRES 12/18/81
UNLESS DRILLING UNDERWAY

IN ABOVE SPACE DESCRIBE PROPOSED PROGRAM; IF PROPOSAL IS TO DEEPEN OR PLUG BACK, GIVE DATA ON PRESENT PRODUCTIVE ZONE AND PROPOSED NEW PRODUCTIVE ZONE. GIVE BLOWOUT PREVENTER PROGRAM, IF ANY.

I hereby certify that the information above is true and complete to the best of my knowledge and belief.

Signed C. H. Peoples Title Regional Drilling Manager Date June 16, 1981

(This space for State Use)

SUPERVISOR DISTRICT

APPROVED BY [Signature] TITLE _____ DATE JUN 17 1981

CONDITIONS OF APPROVAL, IF ANY:

NEW MEXICO OIL CONSERVATION COMMISSION
WELL LOCATION AND ACREAGE DEDICATION PLAT

Form No. 1
Superseded by Form No. 1
1-7-79

All distances must be from the outer boundaries of the Section

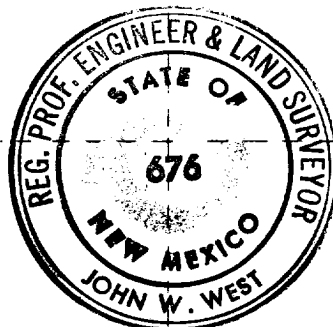
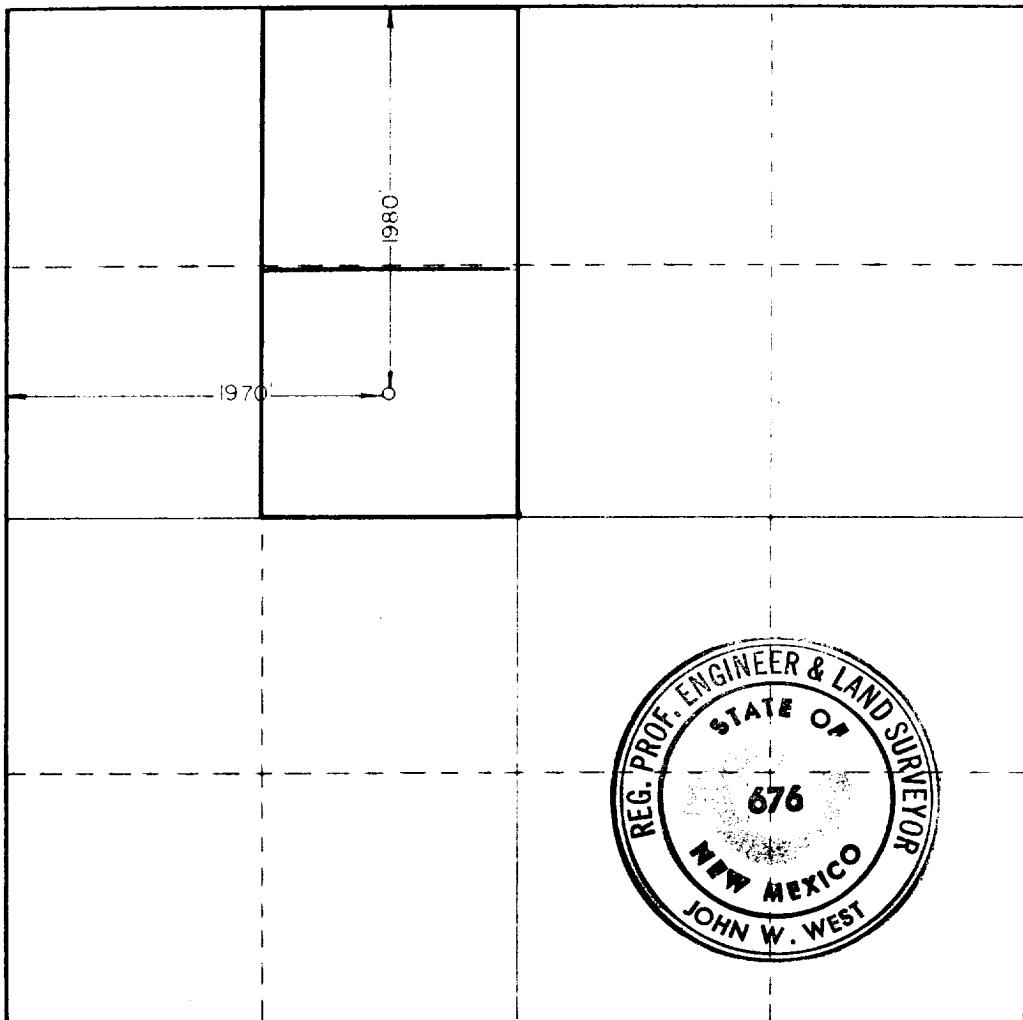
Operator Enserch Exploration, Inc.,		Lease Wilson		Acreage 1	
Unit Letter F	Section 6	Range 5 South	Block 33 East	County Roosevelt	
Actual Well Location of Well					
1980 feet from the north line and		1970 feet from the west line			
Ground Surface Elev. 4502.1	Producing Formation Mississippian Lime	Pool Undesignated		Well No. 8040	

1. Outline the acreage dedicated to the subject well by colored pencil or hachure marks on the plat below.
2. If more than one lease is dedicated to the well, outline each and identify the ownership thereof (both as to working interest and royalty).
3. If more than one lease of different ownership is dedicated to the well, have the interests of all owners been consolidated by communitization, unitization, force-pooling, etc?

Yes No If answer is "yes," type of consolidation _____

If answer is "no," list the owners and tract descriptions which have actually been consolidated (if so reverse side of this form if necessary.) _____

No allowable will be assigned to the well until all interests have been consolidated (by communitization, unitization, forced-pooling, or otherwise) or until a non-standard unit, eliminating such interests, has been approved by the Commission.



CERTIFICATION

I hereby certify that the information contained herein is true and complete to the best of my knowledge and belief.

C. H. Peeples

C. H. Peeples

Regional Drilling Manager

Enserch Exploration, Inc.

June 16, 1981

I hereby certify that the well location shown on this plat was plotted from field notes of actual surveys made by me or under my supervision, and that the same is true and correct to the best of my knowledge and belief.

Date Surveyed

June 10, 1981

Registered Engineer and Land Surveyor

John W. West

Certificate No. **JOHN W. WEST 676**
PATRICK A. ROMERO 6663
Ronald J. Eidson 3239

