

District I
1625 N. French Dr., Hobbs, NM 88240
District II
1301 W. Grand Ave., Artesia, NM 88210
District III
1000 Rio Brazos Rd., Aztec, NM 87410
District IV
1220 S. St. Francis Dr., Santa Fe, NM
87505

OIL CONSERVATION DIVISION
1220 South St. Francis Dr.
Santa Fe, NM 87505

WELL API NO.
30-025-03788

5. Indicate Type of Lease
STATE ☒ FEE ☐

6. State Oil & Gas Lease No.
B-7766

7. Lease Name or Unit Agreement Name:

Lovington San Andres Unit

8. Well No.
11

9. Pool name or Wildcat
Lovington Grayburg San Andres

SUNDRY NOTICES AND REPORTS ON WELLS
(DO NOT USE THIS FORM FOR PROPOSALS TO DRILL OR TO DEEPEN OR PLUG BACK TO A DIFFERENT RESERVOIR. USE "APPLICATION FOR PERMIT" (FORM C-101) FOR SUCH PROPOSALS.)

1. Type of Well:

Oil Well ☐ Gas Well ☐ Other Water Injection Well

2. Name of Operator
Pure Resource

3. Address of Operator
500 West Illinois - Midland, Texas 79701

4. Well Location

Unit Letter F : 1980 feet from the NORTH line and 1980 feet from the WEST line

Section 36 Township 16S Range 36E NMPM Lea County

10. Elevation (Show whether DR, RKB, RT, GR, etc.)

11. Check Appropriate Box to Indicate Nature of Notice, Report or Other Data
NOTICE OF INTENTION TO:

PERFORM REMEDIAL WORK ☐ PLUG AND ABANDON ☐

TEMPORARILY ABANDON ☐ CHANGE PLANS ☐

PULL OR ALTER CASING ☐ MULTIPLE COMPLETION ☐

OTHER: ☐

SUBSEQUENT REPORT OF:

REMEDIAL WORK ☒ ALTERING CASING ☐

COMMENCE DRILLING OPNS. ☐ PLUG AND ABANDONMENT ☐

CASING TEST AND CEMENT JOB ☐

OTHER: ☐

12. Describe proposed or completed operations. (Clearly state all pertinent details, and give pertinent dates, including estimated date of starting any proposed work). SEE RULE 1103. For Multiple Completions: Attach wellbore diagram of proposed completion or recompilation.

9 5/8" 32# casing set at 2,087' (Circ)

5 1/2" 17# casing set at 4,575' (Circ)

Open Hole completion 4,575-5,130'

Injection packer at 4,506' (Baker Model A-2 Lok-Set)

Failed Mechanical Integrity Test: Salt water flow out of surface casing. Workover Date: Dec 7, 2001 thru Dec 17, 2001
Ran cement bond log from 4,000'-3,400'. Logging tool broke down. TOC appeared to be at 3,746'. Shot circulating holes at 3,7098-08. Could not establish circulation. Reran bond log and found stringer at 2,785-90'. Spotted four barrels of cement across bottom set of squeeze perfs. POOH and reset packer at 2,917' with tail pipe at 3,239'. Squeezed well with final pressure of 2,000 PSI December 10, 2001. Pumped 933 sacks of class "C" December 11, 2001 establishing good circulation on production to surface casing annulus through the upper set of squeeze holes (2,720'). Final squeeze pressure of 2,000 PSI. Drilled out cement from 2,586' - 2,770' and 3,430'-3,744'. Retrieved RBP and cleaned out fill to 5,125'. Returned to injection.

Post workover mechanical integrity test was not witnessed by NMOCD.

Starting Pressure: 580 PSI

Final Pressure: 560 PSI

I hereby certify that the information above is true and complete to the best of my knowledge and belief.

SIGNATURE Tejay Simpson
Type or print name: Tejay Simpson

TITLE: Area Foreman

DATE: June 25, 2002

Telephone No.: 505-886-7503

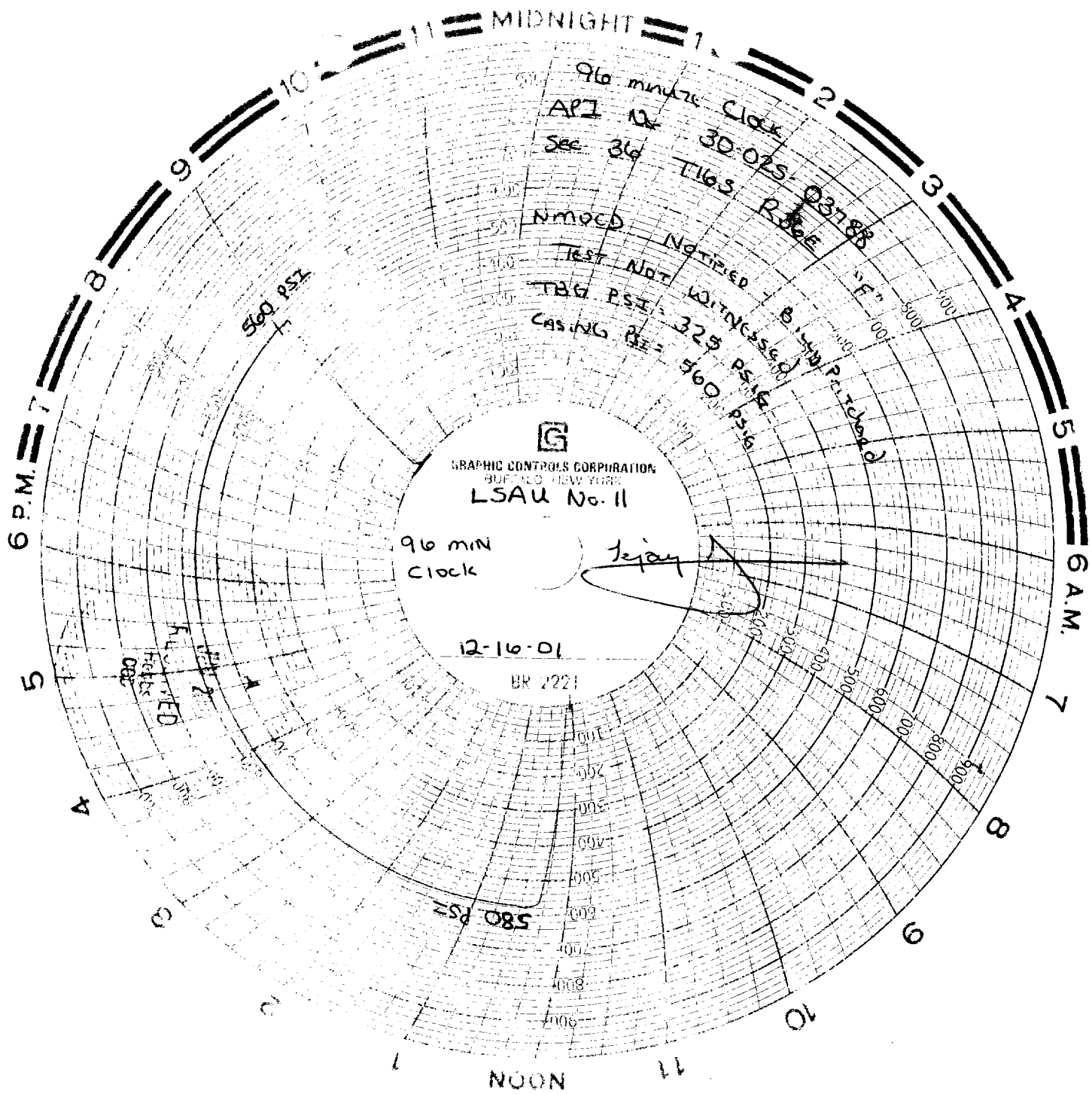
(This space for State use)

APPROVED BY

ORIGINAL SIGNED BY
GARY W. WINK
OC FIELD REPRESENTATIVE II/STAFF MANAGER

DATE

June 25, 2002



GRAPHIC CONTROLS CORPORATION
BUFFALO, NEW YORK
LSAU No. 11

96 min
Clock

12-16-01

BR 2221

580 PSI

500 PSI

NMOED

Test Not

TBO PSI =

Casing PSI =

Notified

Witnessed

325 PSI

560 PSI

500 PSI

400 PSI

300 PSI

200 PSI

100 PSI

0 PSI

0 PSI

0 PSI

0 PSI

0 PSI

0 PSI

0 PSI

0 PSI

0 PSI

0 PSI

0 PSI

0 PSI

0 PSI

0 PSI

0 PSI

0 PSI

0 PSI

0 PSI

0 PSI