

NO. OF COPIES RECEIVED	
DISTRIBUTION	
SANTA FE	
FILE	
U.S.G.S.	
LAND OFFICE	
OPERATOR	

NEW MEXICO OIL CONSERVATION COMMISSION

Form C-101
Revised 1-1-65

5A. Indicate Type of Lease
STATE FEE

5. State Oil & Gas Lease No.

APPLICATION FOR PERMIT TO DRILL, DEEPEN, OR PLUG BACK

1a. Type of Work
DRILL DEEPEN PLUG BACK

b. Type of Well
OIL WELL GAS WELL OTHER _____
SINGLE ZONE MULTIPLE ZONE

2. Name of Operator
Cities Service Oil Company

3. Address of Operator
P. O. Box 69 - Hobbs, New Mexico 88240

4. Location of Well
UNIT LETTER **G** LOCATED **2040** FEET FROM THE **North** LINE
AND **1930** FEET FROM THE **East** LINE OF SEC. **19** TWP. **16S** RGE. **37E** NMPM

7. Unit Agreement Name

8. Farm or Lease Name
State CK

9. Well No.
1

10. Field and Pool, or Wildcat
Livington, East

12. County
Lea

19. Proposed Depth
11400'

19A. Formation
Stram

20. Rotary or C.T.
Rotary

21. Elevations (Show whether DF, RT, etc.)
4080 (Est.)

21A. Kind & Status Plug. Bond
Required

21B. Drilling Contractor
Not Released

22. Approx. Date Work will start
March 26, 1969

PROPOSED CASING AND CEMENT PROGRAM

SIZE OF HOLE	SIZE OF CASING	WEIGHT PER FOOT	SETTING DEPTH	SACKS OF CEMENT	EST. TOP
17 1/2"	13 3/8"	48#	350'	Circulate	G.L.
12"	8 5/8"	24#, 28#, 32#	4500'	Circulate	G.L.
7 7/8"	5 1/2"	17#, 20#	11400'	300	9400'

It is proposed to drill to a T.D. of 11400' and test the Stram Formation.

The blowout preventer program is as follows:

1. One set of blind rams.
2. One set of drill pipe rams.

NEW MEXICO OIL CONSERVATION COMMISSION
LEA COUNTY FIELD DIVISION
DURING 13 3/8

6-20-69

IN ABOVE SPACE DESCRIBE PROPOSED PROGRAM: IF PROPOSAL IS TO DEEPEN OR PLUG BACK, GIVE DATA ON PRESENT PRODUCTIVE ZONE AND PROPOSED NEW PRODUCTIVE ZONE. GIVE BLOWOUT PREVENTER PROGRAM, IF ANY.

I hereby certify that the information above is true and complete to the best of my knowledge and belief.

Signed E. Spiller Title District Superintendent Date March 19, 1969

(This space for State Use)

APPROVED BY [Signature] TITLE _____ DATE _____

CONDITIONS OF APPROVAL, IF ANY:

NEW MEXICO OIL CONSERVATION COMMISSION
WELL LOCATION AND ACREAGE DEDICATION PLAT

Form C-102
Supersedes C-128
Effective 1-1-65

All distances must be from the outer boundaries of the Section.

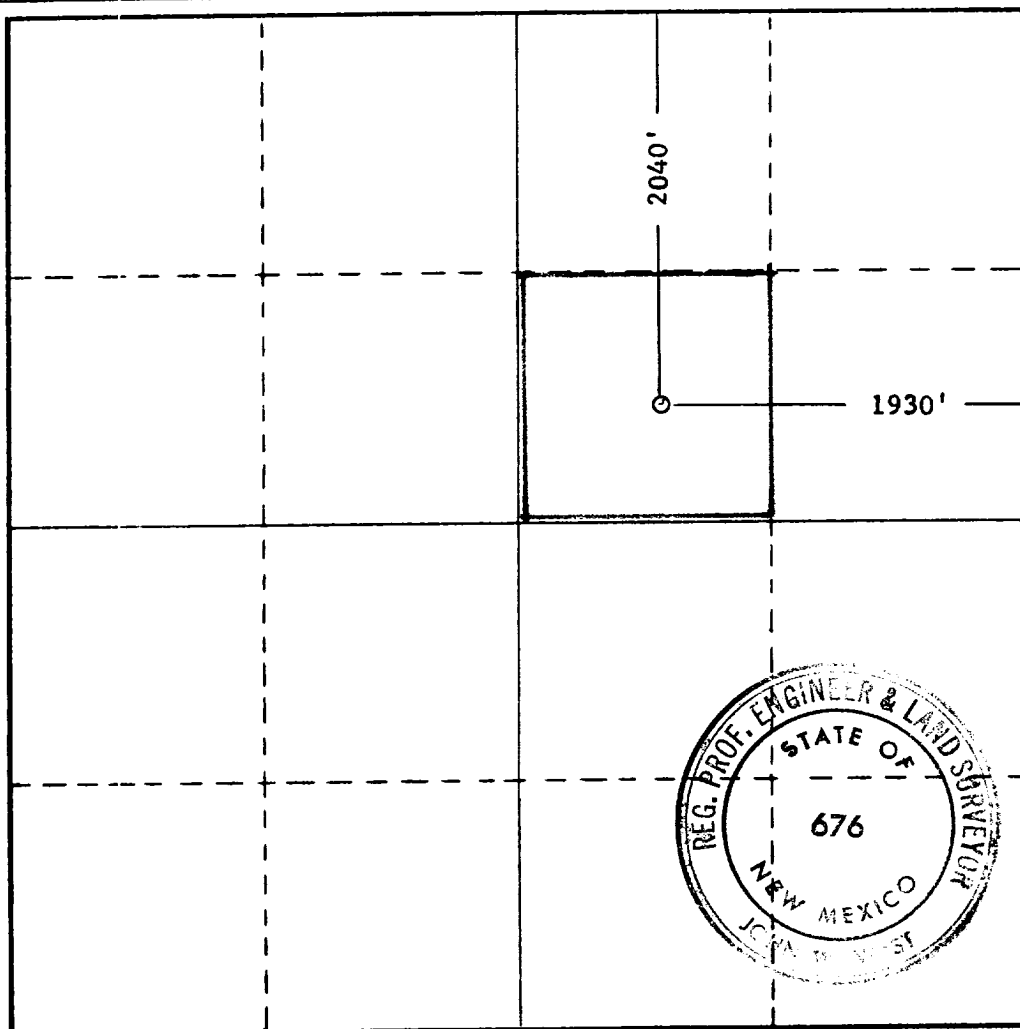
Operator CITIES SERVICE OIL COMPANY		Lease STATE CK			Well No. 1
Unit Letter G	Section 19	Township 16 SOUTH	Range 37 EAST	County LEA	
Actual Footage Location of Well: 2040 feet from the NORTH line and 1930 feet from the EAST line					
Ground Level Elev. 4000	Producing Formation Strawn	Pool Livingston, East		Dedicated Acreage: 40 Acres	

1. Outline the acreage dedicated to the subject well by colored pencil or hachure marks on the plat below.
2. If more than one lease is dedicated to the well, outline each and identify the ownership thereof (both as to working interest and royalty).
3. If more than one lease of different ownership is dedicated to the well, have the interests of all owners been consolidated by communitization, unitization, force-pooling, etc?

Yes No If answer is "yes," type of consolidation **Not Applicable**

If answer is "no," list the owners and tract descriptions which have actually been consolidated. (Use reverse side of this form if necessary.) _____

No allowable will be assigned to the well until all interests have been consolidated (by communitization, unitization, forced-pooling, or otherwise) or until a non-standard unit, eliminating such interests, has been approved by the Commission.



CERTIFICATION

I hereby certify that the information contained herein is true and complete to the best of my knowledge and belief.

Name *E. J. ...*
 Position **District Superintendent**
 Company **Cities Service Oil Company**
 Date **March 19, 1969**

I hereby certify that the well location shown on this plat was plotted from field notes of actual surveys made by me or under my supervision, and that the same is true and correct to the best of my knowledge and belief.

Date Surveyed **3-18-1969**
 Registered Professional Engineer and/or Land Surveyor
John W. West
 Certificate No. **676**



