

COUNTY LEA FIELD Townsend STATE NM 30-025-241198

OPR BROWN, TOM, INC. MAP

1 Humble "A" State

Sec 16, T-16-S, R-35-E CO-ORD

1980' ENL, 660' EWL of Sec EL 4026

Spd 4-16-72 CLASS

Cmp 6-16-72 FORMATION DATUM FORMATION DATUM

CSG & SX - TUBING	FORMATION	DATUM	FORMATION	DATUM
12 3/4" at 485' w/500 sx				
8 5/8" at 4685' w/350 sx				
5 1/2" at 11,960' w/500 sx				

LOGS EL GR RA IND HC A TD 11,960'

IP (Morrow) Perf 11,903-912' F 17 BOFD. Pot based on 24 hr test thru 1/4" chk. GOR 32,900; Gran 61; CP Pkr; TP 450#

Distribution limited and publication prohibited by subscribers' agreement.
 Reproduction rights reserved by Williams & Lee Scouting Service, Inc.

CONT. Co. Rig PROP DEPTH 12,600' TYPE RT
 DATE

E.R. 4-17-72; Opr's Elev. 4015' GL
 PD 12,600' RT (Pennsylvanian)
 Contractor - Co. Rig
 AMEND 3131D: Formerly reported as Undesignated

7-29-72
 4-18-72 Drig. 960'
 4-25-72 Drig. 4445'
 5-1-72 Drig. 6180'
 5-8-72 Drig. 7610' dol & sh
 5-15-72 TD 9427' lm & sh; Trip
 5-22-72 Drig. 10,888'
 5-31-72 Drig. 11,550'
 10T 10,955-11,050'; open 2 hrs, GTS 17" @ ISIM,
 rec 1" oil + 330' SOXGOM, 1 hr 30 min ISIP 1281#,
 FF 138-203#, 1 hr 20 min FSIP 5430#

6-5-72 TD 11,960'; Bag Logs
 6-17-72 TD 11,960'; Prep Perf

LEA
BROWN, TOM, INC.

Townsend
1 Humble "A" State

NM Sec 16, T16S, R35E
Page #2

6-12-72 Continued
DST 11,816-960', open 2 hrs, GTS 30 mins @
260 MCF/GPD, rec 566' GCM + 90' OCM, 1 hr 30
min ISIP 2981#, FP 138-184#, 1 hr 20 min
FSIP 4505#, HP 6157-6182#

6-20-72 TD 11,960'; Flwg 1d
Perf 11,903-912' w/4 SFF
Acid (11,903-912') 25C gals MA
Acid (11,903-912') 2000 gals (7½%)

6-26-72 TD 11,960'; Testg

7-17-72 TD 11,960'; Testg

7-24-72 TD 11,960'; COMPLETE
LOG TOPS: Anhydrite 1875', Yates 3045', San
Andreas 4640', Glorieta 6220', Tubb 7400',
Pennsylvanian 8660', Mississippi 11,800'

7-29-72

COMPLETION REPORTED

**NEW MEXICO OIL CONSERVATION COMMISSION
WELL LOCATION AND ACREAGE DEDICATION PLAT**

Form O-102
Supersedes C-128
Effective 1-1-65

All distances must be from the outer boundaries of the Section.

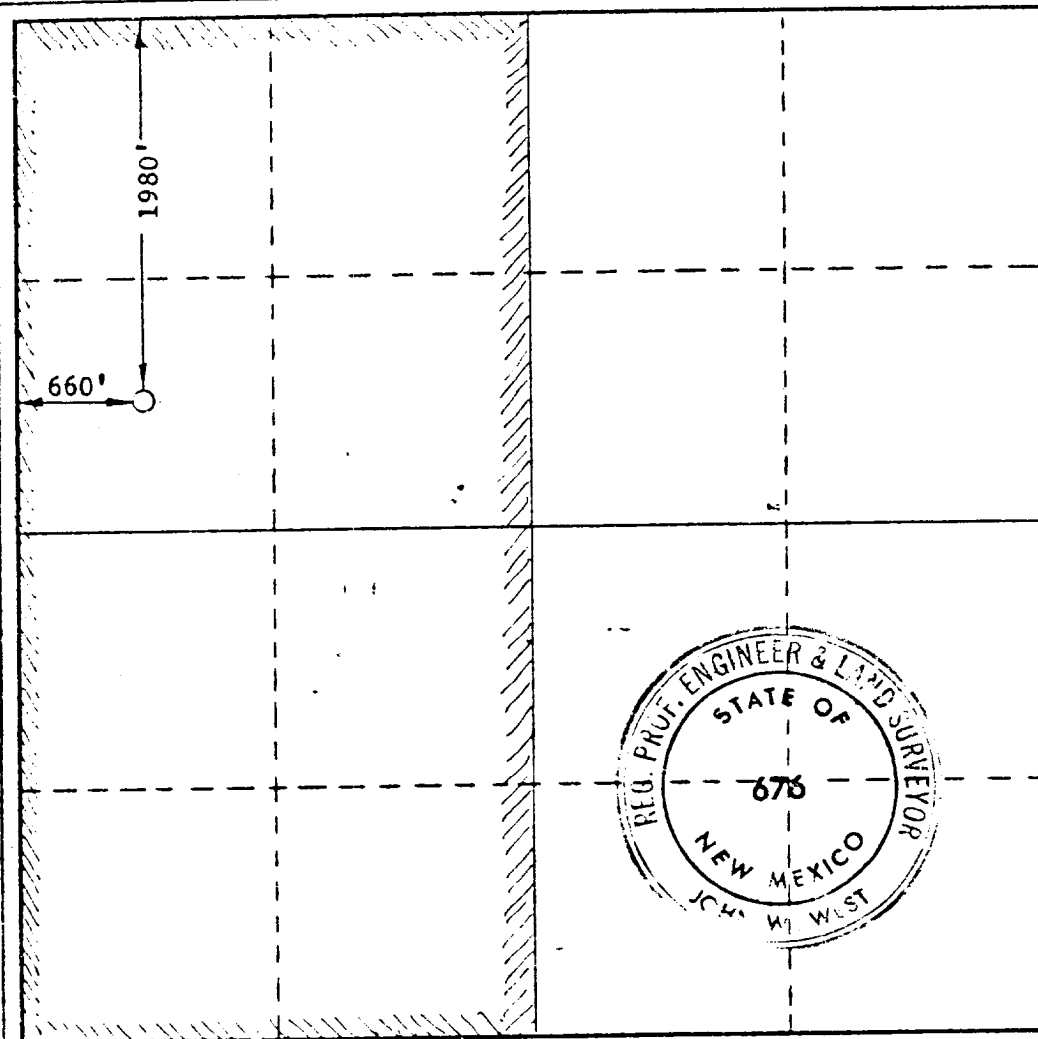
Operator TOM BROWN INC.			Lease HUMBLE STATE "A"		Well No. 1
Unit Letter E	Section 16	Township 16 SOUTH	Range 35 EAST	County LEA	
Actual Footage Location of Well: 1980 feet from the NORTH line and 660 feet from the WEST line					
Ground Level Elev. 4014.9'	Producing Formation PENN.		Pool UNDESIGNATED		Dedicated Acreage: W$\frac{1}{2}$ 320 Acres

1. Outline the acreage dedicated to the subject well by colored pencil or hachure marks on the plat below.
2. If more than one lease is dedicated to the well, outline each and identify the ownership thereof (both as to working interest and royalty).
3. If more than one lease of different ownership is dedicated to the well, have the interests of all owners been consolidated by communitization, unitization, force-pooling, etc?

Yes No If answer is "yes," type of consolidation _____

If answer is "no," list the owners and tract descriptions which have actually been consolidated. (Use reverse side of this form if necessary.) _____

No allowable will be assigned to the well until all interests have been consolidated (by communitization, unitization, forced-pooling, or otherwise) or until a non-standard unit, eliminating such interests, has been approved by the Commission.



CERTIFICATION

I hereby certify that the information contained herein is true and complete to the best of my knowledge and belief.

John W. West
Name

Position
AGENT

Company
TOM BROWN INC.

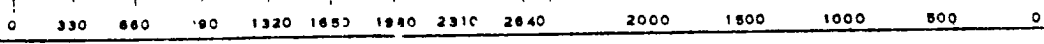
Date
APRIL 14, 1972

I hereby certify that the well location shown on this plat was plotted from field notes of actual surveys made by me or under my supervision, and that the same is true and correct to the best of my knowledge and belief.

Date Surveyed
APRIL 13, 1972

Registered Professional Engineer and/or Land Surveyor

John W. West
Certificate No. **676**



RECEIVED

JUL 27 1972

OIL CONSERVATION COMM.
HOBBBS, N. M.