

30-025-29854

UNITED STATES
DEPARTMENT OF THE INTERIOR
GEOLOGICAL SURVEY

APPLICATION FOR PERMIT TO DRILL, DEEPEN, OR PLUG BACK

1a. TYPE OF WORK
 DRILL DEEPEN PLUG BACK

b. TYPE OF WELL
 OIL WELL GAS WELL OTHER

SINGLE ZONE MULTIPLE ZONE

2. NAME OF OPERATOR
 CONOCO INC.

3. ADDRESS OF OPERATOR
 P. O. Box 460, Hobbs, N.M. 88240

4. LOCATION OF WELL (Report location clearly and in accordance with any State requirements.*)
 At surface Unit G
 2620' FNL & 1404' FEL
 At proposed prod. zone same

14. DISTANCE IN MILES AND DIRECTION FROM NEAREST TOWN OR POST OFFICE*

15. DISTANCE FROM PROPOSED* LOCATION TO NEAREST PROPERTY OR LEASE LINE, FT. (Also to nearest drlg. unit line, if any)

16. NO. OF ACRES IN LEASE

17. NO. OF ACRES ASSIGNED TO THIS WELL

18. DISTANCE FROM PROPOSED LOCATION* TO NEAREST WELL, DRILLING, COMPLETED, OR APPLIED FOR, ON THIS LEASE, FT.

19. PROPOSED DEPTH
 4300'

20. ROTARY OR CABLE TOOLS
 Rotary

21. ELEVATIONS (Show whether DF, RT, GR, etc.)
 4048' GL

22. APPROX. DATE WORK WILL START*
 March 1, 1987

5. LEASE DESIGNATION AND SERIAL NO.
 LC-029509(A)

6. IF INDIAN, ALLOTTEE OR TRIBE NAME

7. UNIT AGREEMENT NAME
 MCA

8. FARM OR LEASE NAME
 MCA Unit

9. WELL NO.
 368

10. FIELD AND POOL, OR WILDCAT
 Maljamar GISA

11. SEC., T., R., M., OR BLK. AND SURVEY OR AREA
 Sec. 21-17S-32E

12. COUNTY OR PARISH
 Lea

13. STATE
 NM

23. PROPOSED CASING AND CEMENTING PROGRAM

SIZE OF HOLE	SIZE OF CASING	WEIGHT PER FOOT	SETTING DEPTH	QUANTITY OF CEMENT
17 1/2"	13 3/8"	54.5 #	800'	675 SKS class "C" Circ.
7 7/8"	5 1/2"	15.5 #	4300'	1485 SKS class "C" class "E" light & CO2 resistive cmf - Circ.

It is proposed to drill a straight hole to 4300' and complete as a Grayburg/San Andres oil well. Attached is a location and acreage dedication plat, a proposed Well Plan outline and a Surface Use Plan. An application for Non-standard location has been filed with the NMOC in Santa Fe.

IN ABOVE SPACE DESCRIBE PROPOSED PROGRAM: If proposal is to deepen or plug back, give data on present productive zone and proposed new productive zone. If proposal is to drill or deepen directionally, give pertinent data on subsurface locations and measured and true vertical depths. Give blowout preventer program, if any.

24. SIGNED [Signature] TITLE Administrative Supervisor DATE 1-19-87

(This space for Federal or State office use)

PERMIT NO. Original APPROVAL DATE 2-3-87

APPROVED BY [Signature] TITLE [Signature] DATE 2-3-87

CONDITIONS OF APPROVAL, IF ANY:

Subject to
Like Approval
by State

*See Instructions On Reverse Side

BLM - Carlsbad (6) Arco (2) Cities (1) PLC (1) File

NEW MEXICO OIL CONSERVATION COMMISSION
WELL LOCATION AND ACREAGE DEDICATION PLAT

Form C-102
Supersedes C-128
Effective 1-1-65

All distances must be from the outer boundaries of the Section

Operator CONOCO, INC		Lease MCA UNIT			Well No. 368
Unit Letter G	Section 21	Township 17-S	Range 32-E	County LEA	

Actual Footage Location of Well:
2620 feet from the **NORTH** line and **1404** feet from the **EAST** line

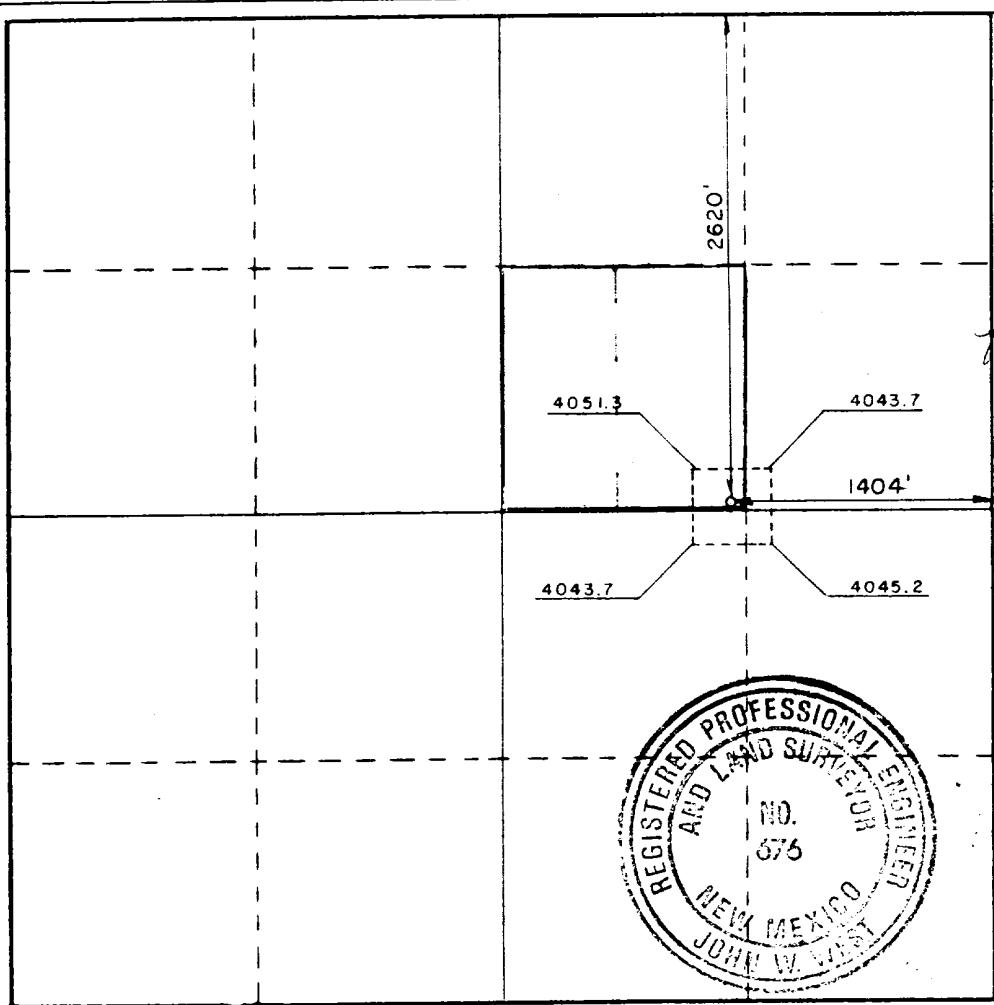
Ground Level Elev. 4047.7	Producing Formation Grayburg/San Andres	Pool Maljamar Grayburg/San Andres	Dedicated Acreage: 41.20 Acres
-------------------------------------	---	---	--

- Outline the acreage dedicated to the subject well by colored pencil or hachure marks on the plat below.
- If more than one lease is dedicated to the well, outline each and identify the ownership thereof (both as to working interest and royalty).
- If more than one lease of different ownership is dedicated to the well, have the interests of all owners been consolidated by communitization, unitization, force-pooling, etc?

Yes No If answer is "yes," type of consolidation unitization

If answer is "no," list the owners and tract descriptions which have actually been consolidated. (Use reverse side of this form if necessary.) _____

No allowable will be assigned to the well until all interests have been consolidated (by communitization, unitization, forced-pooling, or otherwise) or until a non-standard unit, eliminating such interests, has been approved by the Commission.



CERTIFICATION

I hereby certify that the information contained herein is true and complete to the best of my knowledge and belief.

Name Gene Bull

Position Administrative Supervisor

Company Conoco, Inc.

Date 1-19-87

I hereby certify that the well location shown on this plat was plotted from field notes of actual surveys made by me or under my supervision, and that the same is true and correct to the best of my knowledge and belief.

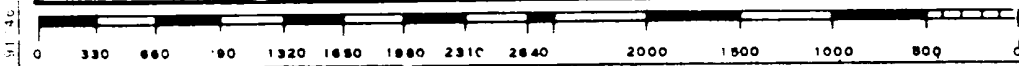
Date Surveyed JANUARY 5, 1987

Registered Professional Engineer and/or Land Surveyor

John W. West

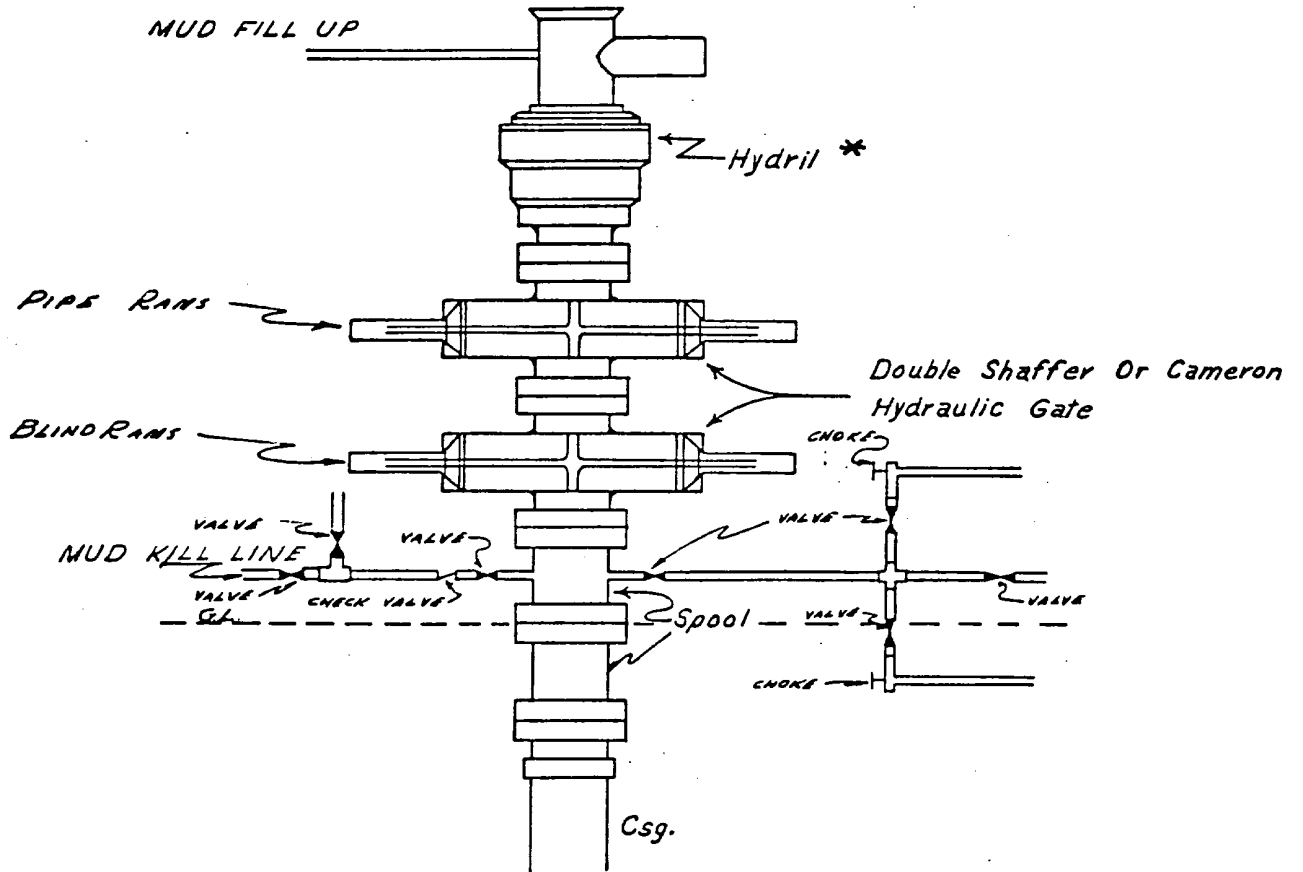
Certificate No. JOHN W. WEST, 676

RONALD J. EIDSON, 3239



CONOCO INC.

Blow-out Preventer Specifications



NOTE:

Manual and Hydraulic controls with closing unit no less than 75' from well head.
Remote controls on rig floor.

*

DUE TO SUBSTRUCTURE CLEARANCE, HYDRIL
MAY OR MAY NOT BE USED.

RECEIVED
FEB 4 1987
OCD
HOBBS OFFICE

111