

UNITED STATES
DEPARTMENT OF THE INTERIOR
BUREAU OF LAND MANAGEMENT

CONTACT RECF...
OFFICE FOR I...
OF COPIES REQUIRED
(Other Instructions on
reverse side)

30-025-32068

BLM Roswell District

Modified Form No.

ND60-3160-2

APPLICATION FOR PERMIT TO DRILL, DEEPEN, OR PLUG BACK

1a. TYPE OF WORK

DRILL ☒

DEEPEN ☐

PLUG BACK ☐

b. TYPE OF WELL

OIL
WELL ☒

GAS
WELL ☐

OTHER

SINGLE
ZONE ☒

MULTIPLE
ZONE ☐

2. NAME OF OPERATOR

THE WISER OIL COMPANY

3a. Area Code & Phone No.

505/748-3352

3. ADDRESS OF OPERATOR

PO BOX 1412, ARTESIA NM 88211-1412

4. LOCATION OF WELL (Report location clearly and in accordance with any State requirements.)*
At surface

1290' FSL & 1328' FEL, Unit O

At proposed prod. zone

14. DISTANCE IN MILES AND DIRECTION FROM NEAREST TOWN OR POST OFFICE*

THREE-QUARTERS (3/4) OF A MILE NORTHEAST OF MALJAMAR

15. DISTANCE FROM PROPOSED*

LOCATION TO NEAREST
PROPERTY OR LEASE LINE, FT.
(Also to nearest drlg. unit line, if any)

1328'

16. NO. OF ACRES IN LEASE

3280

17. NO. OF ACRES ASSIGNED
TO THIS WELL

40

18. DISTANCE FROM PROPOSED LOCATION*

TO NEAREST WELL, DRILLING, COMPLETED,
OR APPLIED FOR, ON THIS LEASE, FT.

854'

19. PROPOSED DEPTH

4425'

20. ROTARY OR CABLE TOOLS

ROTARY

21. ELEVATIONS (Show whether DF, RT, GR, etc.)

4228' GR

22. APPROX. DATE WORK WILL START*

05/17/93

23.

PROPOSED CASING AND CEMENTING PROGRAM

HOLE SIZE	CASING SIZE	WEIGHT/FOOT	GRADE	THREAD TYPE	SETTING DEPTH	QUANTITY OF CEMENT
12-1/4"	8-5/8"	24#	J-55	8 R	400'	Circulate
7-7/8"	5-1/2"	17#	K-55	8 R	4425'	Sufficient to bring top of amt to base of salt. top

Mud Program:

0 - 400' Drill with fresh water
400 - 4425' Drill with brine water

BOP Program:

Will install on the 8-5/8" surface casing a 10" Series 900
Type "E" Shaffer Double Hydraulic BOP and will test before
drilling in the Queen formation.

IN ABOVE SPACE DESCRIBE PROPOSED PROGRAM: If proposal is to deepen or plug back, give data on present productive zone and proposed new productive zone. If proposal is to drill or deepen directionally, give pertinent data on subsurface locations and measured and true vertical depths. Give blowout preventer program, if any.

SIGNED

TITLE

DATE

(This space for Federal or State office use)

PERMIT NO.

APPROVAL DATE

APPROVED BY

TITLE

DATE

APPROVAL SUBJECT TO
GENERAL REQUIREMENTS AND
SPECIAL STIPULATIONS
ATTACHED

*See Instructions On Reverse Side

Title 18 U.S.C. Section 1001, makes it a crime for any person knowingly and willfully to make to any department or agency of the United States any false statement.

APPLICATION FOR DRILLING

THE WISER OIL COMPANY
MALJAMAR GRAYBURG UNIT WELL NO. 93
1290' FSL & 1328' FEL, UNIT O
SECTION 3, TOWNSHIP 17 SOUTH, RANGE 32 EAST
LEA COUNTY, NEW MEXICO
LEASE NO. 8910088480

In connection with Form 3160-3, Application for Permit to Drill subject well, The Wisser Oil Company submits the following items of pertinent information in accordance with BLM requirements:

1. The geological surface formation is recent Permian with quaternary alluvium and other surficial deposits.
2. The estimated tops of geological markers are as follows:

Rustler Anhydrite	1120'
Top of Salt	1270'
Base of Salt	2350'
Queen	3400'
Grayburg	3800'
San Andres	4120'
T.D.	4425'

3. The estimated depths at which water, oil or gas formations are anticipated to be encountered:

Water: There is little, if any, fresh water in this section.

Oil: Grayburg and San Andres below 3900'.

Gas: None anticipated.

4. Proposed Casing Program: See Form 3160-3.
5. Proposed Control Equipment: See Form 3160-3.
6. Mud Program: See Form 3160-3.
7. Auxiliary Equipment: Blowout preventer, gas detector, kelly cock, pit level monitor, flow sensors and stabbing valve.
8. Testing, Logging and Coring Programs:

Drill Stem Tests: None planned.

Logging: GR-DLL-MSFL-Cal T.D. - 2300'
GR-CNL-CDL-Cal T.D. - Surface

Coring: None planned.

RECEIVED

JUN 29 1993

LIBRARY
FBI

APPLICATION FOR DRILLING
Maljamar Grayburg Unit #93
Page 2

9. No abnormal pressures or temperatures are anticipated. In the event abnormal pressures are encountered, the proposed mud program will be modified to increase the mud weight.

RECEIVED

JUN 25 1993

TO HONOR
LAW

L CONSERVATION DIVISIC

P.O. Box 2088

Santa Fe, New Mexico 87504-2088

DISTRICT I

P.O. Box 1980, Hobbs, NM 88240

DISTRICT II

P.O. Drawer DD, Artesia, NM 88210

DISTRICT III

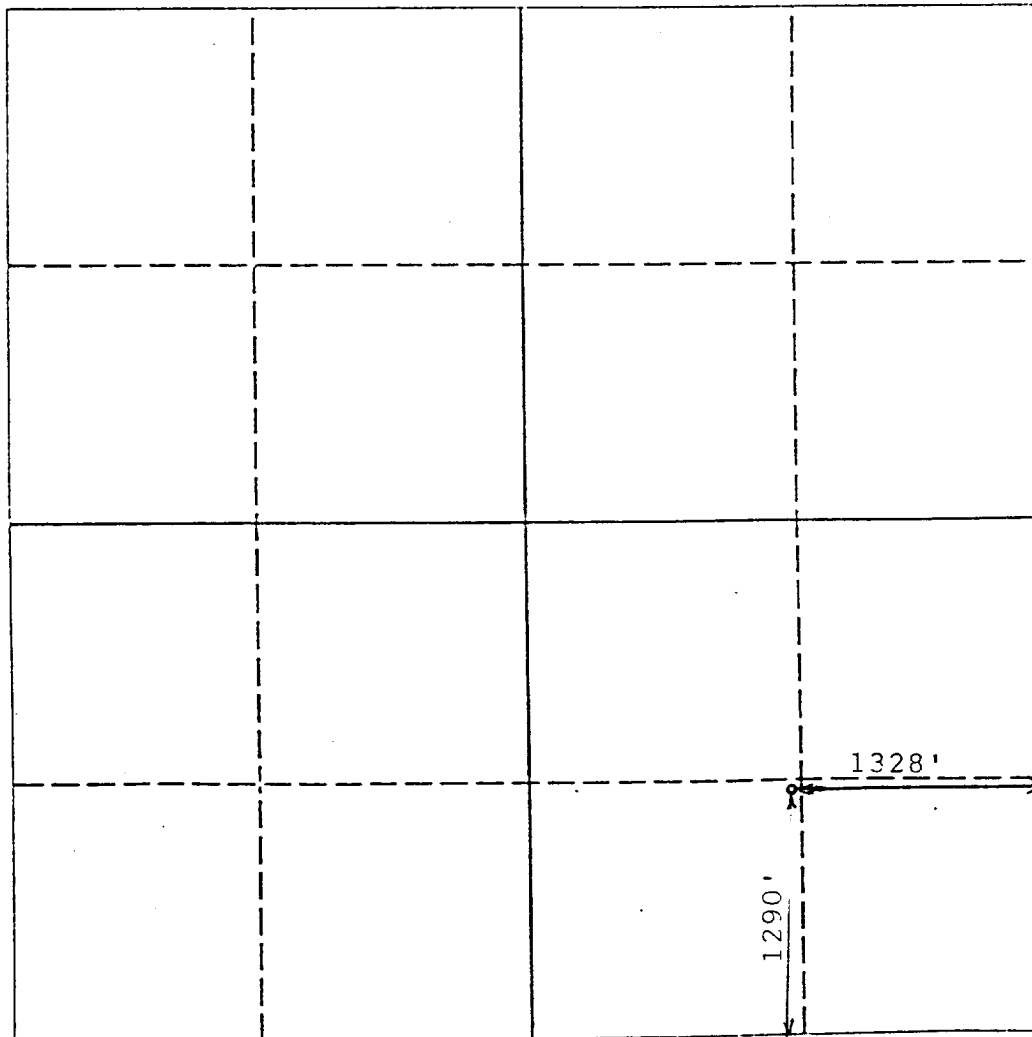
1000 Rio Brazos Rd., Aztec, NM 87410

WELL LOCATION AND ACREAGE DEDICATION PLAT

All Distances must be from the outer boundaries of the section

Operator The Wiser Oil Company			Lease Maljamar Grayburg Unit		Well No. 93
Unit Letter 0	Section 3	Township 17 South	Range 32 East	County Lea	
Actual Footage Location of Well: 1290 feet from the South line and 1328 feet from the East line					
Ground level Elev. 4228	Producing Formation Grayburg & San Andres		Pool Maljamar Grayburg San Andres		Dedicated Acreage: 40 Acres

1. Outline the acreage dedicated to the subject well by colored pencil or hatchure marks on the plat below.
2. If more than one lease is dedicated to the well, outline each and identify the ownership thereof (both as to working interest and royalty).
3. If more than one lease of different ownership is dedicated to the well, have the interest of all owners been consolidated by communitization, unitization, force-pooling, etc.?
☐ Yes ☐ No If answer is "yes" type of consolidation _____
If answer is "no" list the owners and tract descriptions which have actually been consolidated. (Use reverse side of this form if necessary). _____
No allowable will be assigned to the well until all interests have been consolidated (by communitization, unitization, forced-pooling, or otherwise) or until a non-standard unit, eliminating such interest, has been approved by the Division.



OPERATOR CERTIFICATION

I hereby certify that the information contained herein is true and complete to the best of my knowledge and belief.

Signature **Perry L. Hughes**

Printed Name **Perry L. Hughes**

Position **AGENT**

Company **THE WISER OIL CO.**

Date **4/14/93**

SURVEYOR CERTIFICATION

I hereby certify that the well location shown on this plat was plotted from field notes of actual surveys made by me or under my supervision, and that the same is true and correct to the best of my knowledge and belief.

Date Surveyed **March 25, 1993**

Signature & Seal of Professional Surveyor

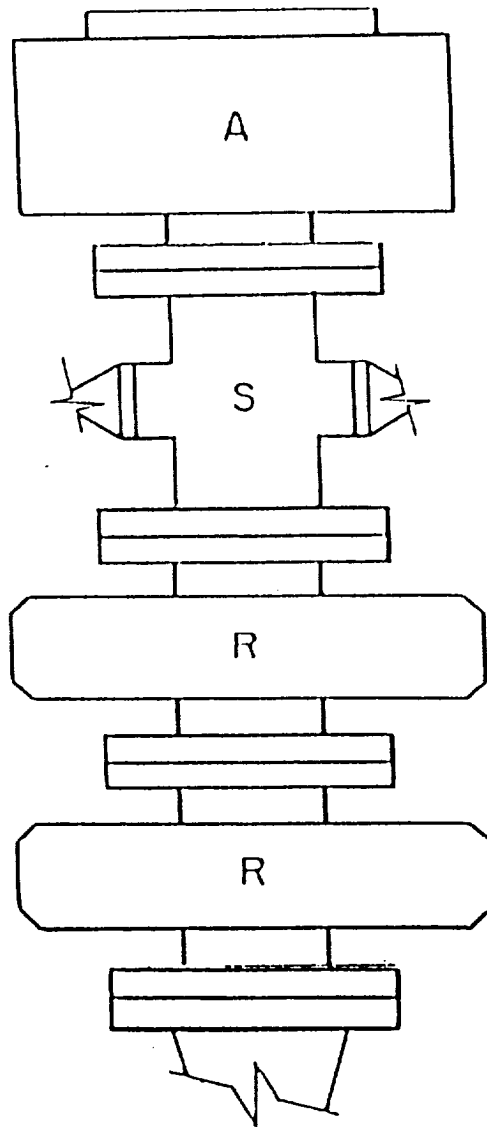
P. R. PATTON
NEW MEXICO
8/12/90
Certificate No. **8112**

NSL-3254

RECEIVED

JUN 29 1993

OLD HOBBS
OFFICE



A - Stripping Rubber

R - Blind and Pipe
Rams

EXHIBIT "D"

The Wiser Oil Company
Maljamar Grayburg Unit #93
BOP Diagram

11-3-93
ELI

RECEIVED

JUN 29 1893

FOOD STORES
OFFICE