

DISTRICT I  
P.O. Box 1980, Hobbs, NM 88241-1980

DISTRICT II  
P.O. Box Drawer DD, Artesia, NM 88211-0719

DISTRICT III  
1000 Rio Brazos Rd., Aztec, NM 87410

DISTRICT IV  
P.O. Box 2088, Santa Fe, NM 87504-2088

State of New Mexico  
Energy, Minerals and Natural Resources Department

# OIL CONSERVATION DIVISION

P.O. Box 2088  
Santa Fe, New Mexico 87504-2088

Form C-10 /

Revised February 10, 199

Instructions on back

Submit to Appropriate District Office

State Lease - 6 Copies

Fee Lease - 5 Copies

AMENDED REPORT

## APPLICATION FOR PERMIT TO DRILL, RE-ENTER, DEEPEN, PLUGBACK, OR ADD A ZONE

<sup>1</sup> Operator Name and Address		<sup>2</sup> OGRID Number
TEXACO EXPLORATION & PRODUCTION INC.		022351
205 E. Bender, HOBBS, NM 88240		<sup>3</sup> API Number
		3002503105
<sup>4</sup> Property Code	<sup>5</sup> Property Name	<sup>6</sup> Well No.
011093	STATE -AN-	5

### <sup>7</sup> Surface Location

UI or lot no	Section	Township	Range	Lot.Idn	Feet From The	North/South Line	Feet From The	East/West Line	County
J	7	18S	35E		2310	SOUTH	2310	EAST	LEA

### <sup>8</sup> Proposed Bottom Hole Location If Different From Surface

UI or lot no	Section	Township	Range	Lot.Idn	Feet From The	North/South Line	Feet From The	East/West Line	County
G	7	18S	35E		1628	NORTH	1640	EAST	LEA

<sup>9</sup> Proposed Pool 1  
VACUUM ABO REEF

<sup>10</sup> Proposed Pool 2

<sup>11</sup> Work Type Code	<sup>12</sup> WellType Code	<sup>13</sup> Rotary or C.T.	<sup>14</sup> Lease Type Code	<sup>15</sup> Ground Level Elevation
Horizontal	O	ROTARY	S	3977'
<sup>16</sup> Multiple	<sup>17</sup> Proposed Depth	<sup>18</sup> Formation	<sup>19</sup> Contractor	<sup>20</sup> Spud Date
No	9100'	ABO REEF		12/24/00

### <sup>21</sup> Proposed Casing and Cement Program

SIZE OF HOLE	SIZE OF CASING	WEIGHT PER FOOT	SETTING DEPTH	SACKS OF CEMENT	EST. TOP
	13 3/8"	48#	317'		
11"	8 5/8"	32&24#	3325'	1700 SX CIRC	
7 7/8"	5 1/2"	15.5&17#	9100'	400 SX	TOC @ 3264'

<sup>22</sup> Describe the proposed program. If this application is to DEEPEN or PLUG BACK, give the data on the present productive zone and proposed new productive zone. Describe the blowout prevention program, if any. Use additional sheets if necessary.

TEXACO INTENDS TO DRILL A HORIZONTAL RE-ENTRY IN THE SUBJECT WELL.

Permit Expires 1 Year From Signature  
Oil Industries Licensing Services  
Horizontal

KICK OFF POINT: 8480' 120' RADIUS AZ 26.5 DEG  
TARGET #1 8600' TVD  
TARGET #2 8500' TVD  
TARGET #3 8550' TVD

ABO REEF PERFS: 8710-70, 8837-65, 8870-8914, 8943-73, ADDED PERFS: 8567-8681  
SET CIBP & WHIPSTOCK @ 8480'. DRILL WINDOW @ 1500' LATERAL. LOG W/TDT LOG. STIMULATE W/PORTED SUBS. RETR WHIPSTOCK & DRILL OUT BP. RUN TBG & RDS INTO VERTICAL HOLE.

<sup>23</sup> I hereby certify that the rules and regulations of the Oil Conservation Division have been complied with and that the information given above is true and complete to the best of my knowledge and belief.

Signature *J. Denise Leake*

Printed Name J. Denise Leake

Title Engineering Assistant

Date 12/11/00 Telephone 397-0405

### OIL CONSERVATION DIVISION

Approved By: \_\_\_\_\_

Title: \_\_\_\_\_  
Approval Date: \_\_\_\_\_ Expiration Date: \_\_\_\_\_

Conditions of Approval:  
Attached

5215

DISTRICT I  
P.O. Box 1980, Hobbs, NM 88241-1980  
DISTRICT II  
P.O. Box Drawer DD, Artesia, NM 88211-0719  
DISTRICT III  
1000 Rio Brazos Rd., Aztec, NM 87410  
DISTRICT IV  
P.O. Box 2088, Santa Fe, NM 87504-2088

State of New Mexico  
Energy, Minerals and Natural Resources Department

Form C-10 2  
Revised February 10, 1999

**OIL CONSERVATION DIVISION**

P.O. Box 2088  
Santa Fe, New Mexico 87504-2088

Instructions on back  
Submit to Appropriate District Office  
State Lease - 4 Copie  
Fee Lease - 3 Copie  
AMENDED REPORT

**WELL LOCATION AND ACREAGE DEDICATION PLAT**

1 API Number 3002503105	2 Pool Code 6178C	3 Pool Name VACUUM ABO REEF
4 Property Code 011093	5 Property Name STATE -AN-	5 Well No 5
7 OGRID Number 022351	8 Operator Name TEXACO EXPLORATION & PRODUCTION INC.	9 Elevation 3977'

10 Surface Location

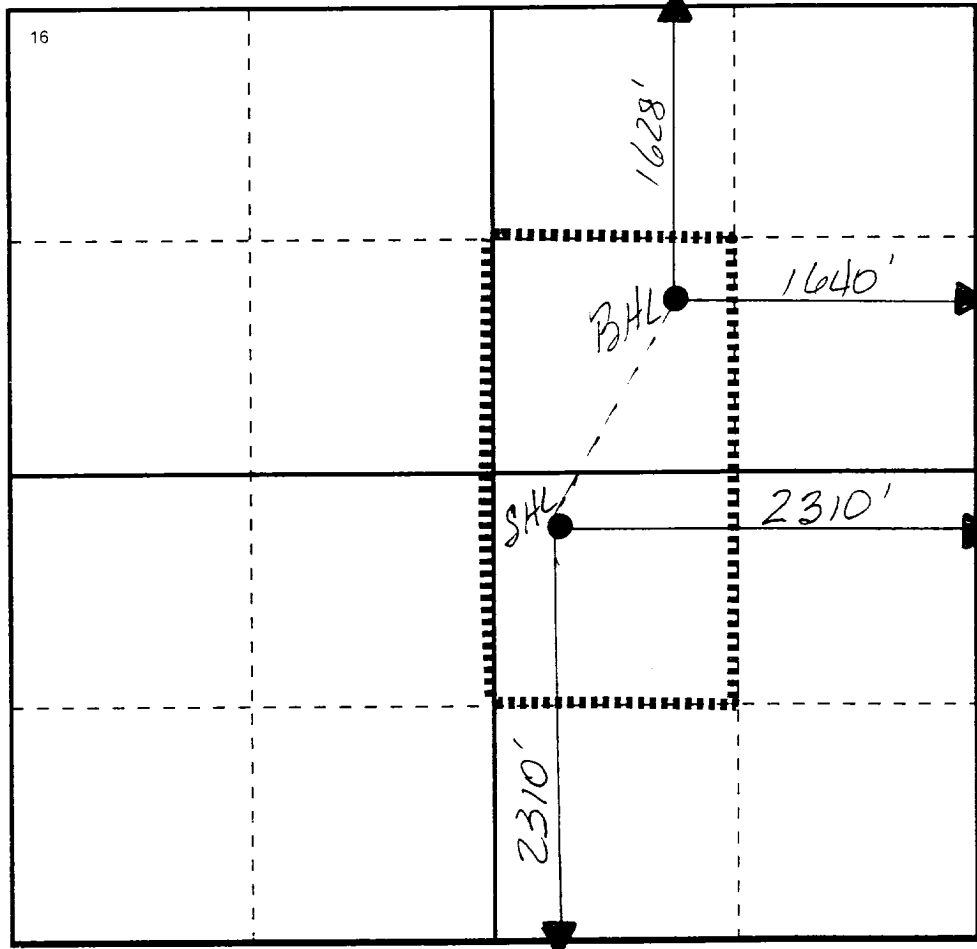
Ul or lot no	Section	Township	Range	Lot.Idn	Feet From The	North/South Line	Feet From The	East/West Line	County
J	7	18S	35E		2310	SOUTH	2310	EAST	LEA

11 Bottom Hole Location If Different From Surface

Ul or lot no	Section	Township	Range	Lot.Idn	Feet From The	North/South Line	Feet From The	East/West Line	County
G	7	18S	35E		1628	NORTH	1640	EAST	LEA

12 Dedicated Acre 80	13 Joint or Infill No	14 Consolidation Code	15 Order No.
-------------------------	--------------------------	-----------------------	--------------

NO ALLOWABLE WILL BE ASSIGNED TO THIS COMPLETION UNTIL ALL INTERESTS HAVE BEEN CONSOLIDATED  
OR A NON-STANDARD UNIT HAS BEEN APPROVED BY THE DIVISION



17 OPERATOR CERTIFICATION

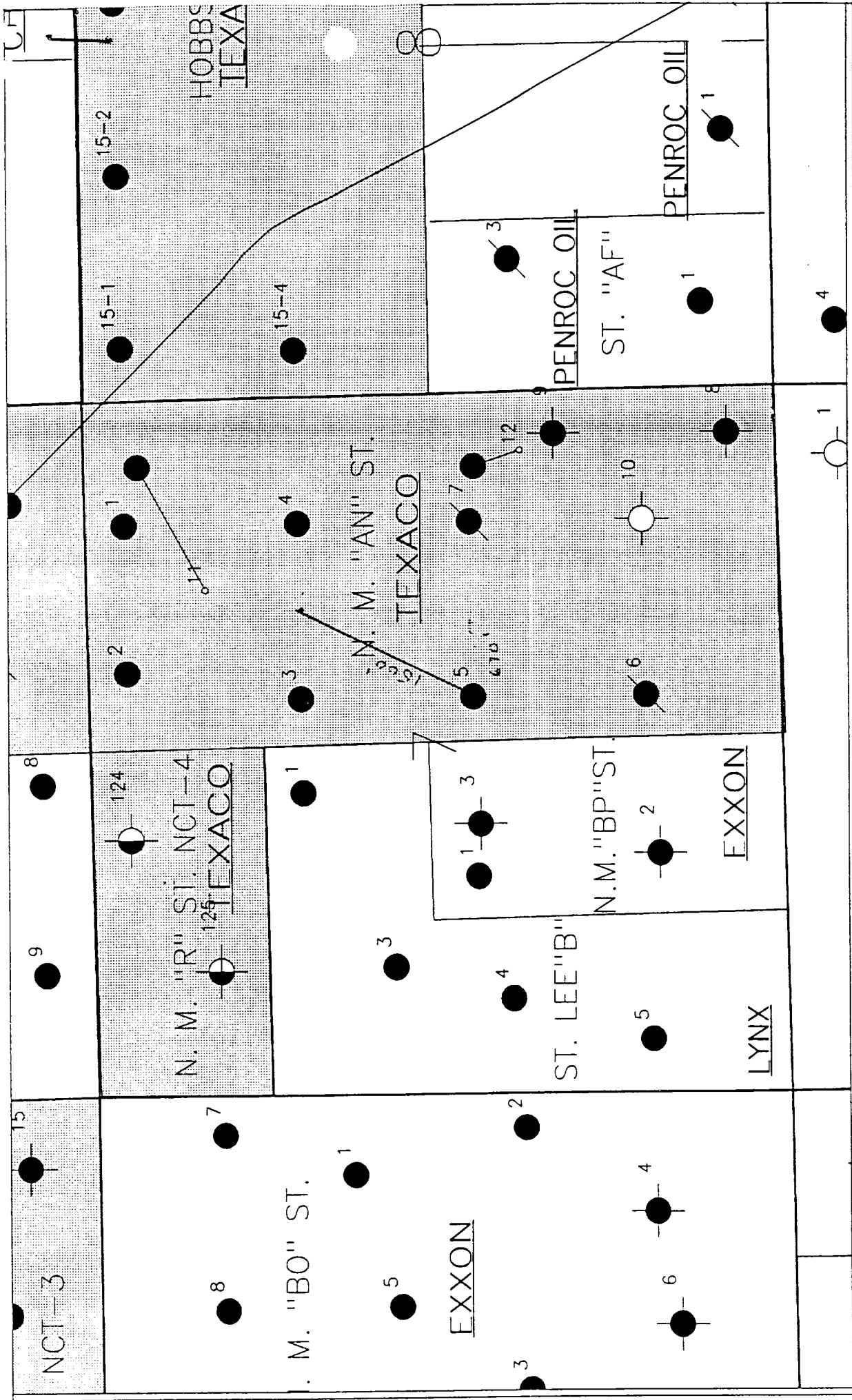
I hereby certify that the information contained herein is true and complete to the best of my knowledge and belief

Signature *J. Denise Leake*  
Printed Name J. Denise Leake  
Position Engineering Assistant  
Date 12/11/00

18 SURVEYOR CERTIFICATION

I hereby certify that the well location shown on this plat was plotted from field notes of actual surveys made by me or under my supervision, and that the same is true and correct to the best of my knowledge and belief.

Date Surveyed \_\_\_\_\_  
Signature & Seal of Professional Surveyor \_\_\_\_\_  
Certificate No \_\_\_\_\_



Texaco Inc.	
VACUUM ABO REEF FIELD TOP OF ABO REEF LEA CO. NM	
Hickory, Kern	12/7/00
Di=100'	Scale 1:12000



LEGEND

- PRODUCER
- / SHUT IN
- + P&A
- . ABO REEF CUMUL

Scale 1:12000.