

DEPARTMENT OF THE INTERIOR  
 BUREAU OF LAND MANAGEMENT

APPLICATION FOR PERMIT TO DRILL, DEEPEN, OR PLUG BACK

1a. TYPE OF WORK  
 DRILL  DEEPEN  PLUG BACK   
 b. TYPE OF WELL  
 OIL WELL  GAS WELL  OTHER  SINGLE ZONE  MULTIPLE ZONE

2. NAME OF OPERATOR  
 Mewbourne Oil Company

3. ADDRESS OF OPERATOR  
 P. O. Box 7698, Tyler, Texas 75711

4. LOCATION OF WELL (Report location clearly and in accordance with any State requirements.)  
 At surface 2310' FSL & ~~1980'~~ FEL  
 At proposed prod. zone 2030  
 Same

14. DISTANCE IN MILES AND DIRECTION FROM NEAREST TOWN OR CITY OFFICE\*  
 10 miles South from Maljamat

10. DISTANCE FROM PROPOSED\* LOCATION TO NEAREST PROPERTY OR LEASE LINE, FT. (Also to nearest drlg. unit line, if any) 660'

18. DISTANCE FROM PROPOSED\* LOCATION TO NEAREST WELL, DRILLING, COMPLETED, OR APPLIED FOR, ON THIS LEASE, FT. 1320'

21. ELEVATIONS (Show whether DF, RT, GR, etc.)  
 3781.5'

5. LEASE DESIGNATION AND SERIAL NO.  
 NM-0554244

6. IF INDIAN, ALLOTTEE OR TRIBE NAME

7. UNIT AGREEMENT NAME

8. FARM OR LEASE NAME  
 Federal "L"

9. WELL NO.  
 2

10. FIELD AND POOL, OR WILDCAT  
 Cuervocho Plains - Upper  
 Pine Springs

11. SEC. T. R. M., OR BLK. AND SURVEY OR AREA  
 17-18S-38E

12. COUNTY OR PARISH 13. STATE  
 L. N. M.

16. TYPE OF APPLICANT DESIGNATED FOR THIS WELL 40

19. PROPOSED DEPTH 9500'

20. ROTARY OR CABLE TOOL 21. ROTARY OR CABLE TOOL  
 Rotary

22. APPROX. DATE WORK WILL START\*  
 Upon U.S.G.S. Approval

PROPOSED CASING AND CEMENTING PROGRAM

SIZE OF HOLE	SIZE OF CASING	WEIGHT PER FOOT	SETTING DEPTH	QUANTITY OF CEMENT
17-1/2"	13-3/8"	61#	450'	650 sxs - circulated
12-1/4"	8-5/8"	24# & 32#	4,500'	1600 sxs - circulated
7-7/8"	5-1/2"	17#	9,500'	800 sxs

Hydrill 900 Series and Shaffer Model 39 - 5000 Hydraulic Blowout Preventer  
 Mud Program: Fresh water to 450'. Drill with brine water to 8500'.  
 Salt mud from 8500' to TD. Flush with mud for logging.

IN ABOVE SPACE DESCRIBE PROPOSED PROGRAM: If proposal is to deepen or plug back, give data on present productive zone and proposed new productive zone. If proposal is to drill or deepen directionally, give pertinent data on subsurface locations and measured and true vertical depths. Give blowout preventer program, if any.

24. SIGNED [Signature] TITLE Engr. Oprns. Secretary DATE 9/12/86

(This space for Federal or State office use)

PERMIT NO. 001507 APPROVAL DATE \_\_\_\_\_

APPROVED BY \_\_\_\_\_ TITLE \_\_\_\_\_ DATE 10/3/86

CONDITIONS OF APPROVAL, IF ANY:

APPROVAL SUBJECT TO  
 GENERAL REQUIREMENTS AND  
 SPECIAL STIPULATIONS

\*See Instructions On Reverse Side

Title 18 U.S.C. Section 1001, makes it a crime for any person knowingly and willfully to make to any department or agency of the United States any false, fictitious or fraudulent statements or representations as to any matter within its jurisdiction.

Surface Formation:

Quaternary: Sal 1

Geological Markers:

Yates 2835', Bone 2855', San Andres 400',  
Bone Springs sand 8750', Salt dome 8750'

Estimated depth at which water, oil, or gas are expected to be encountered:

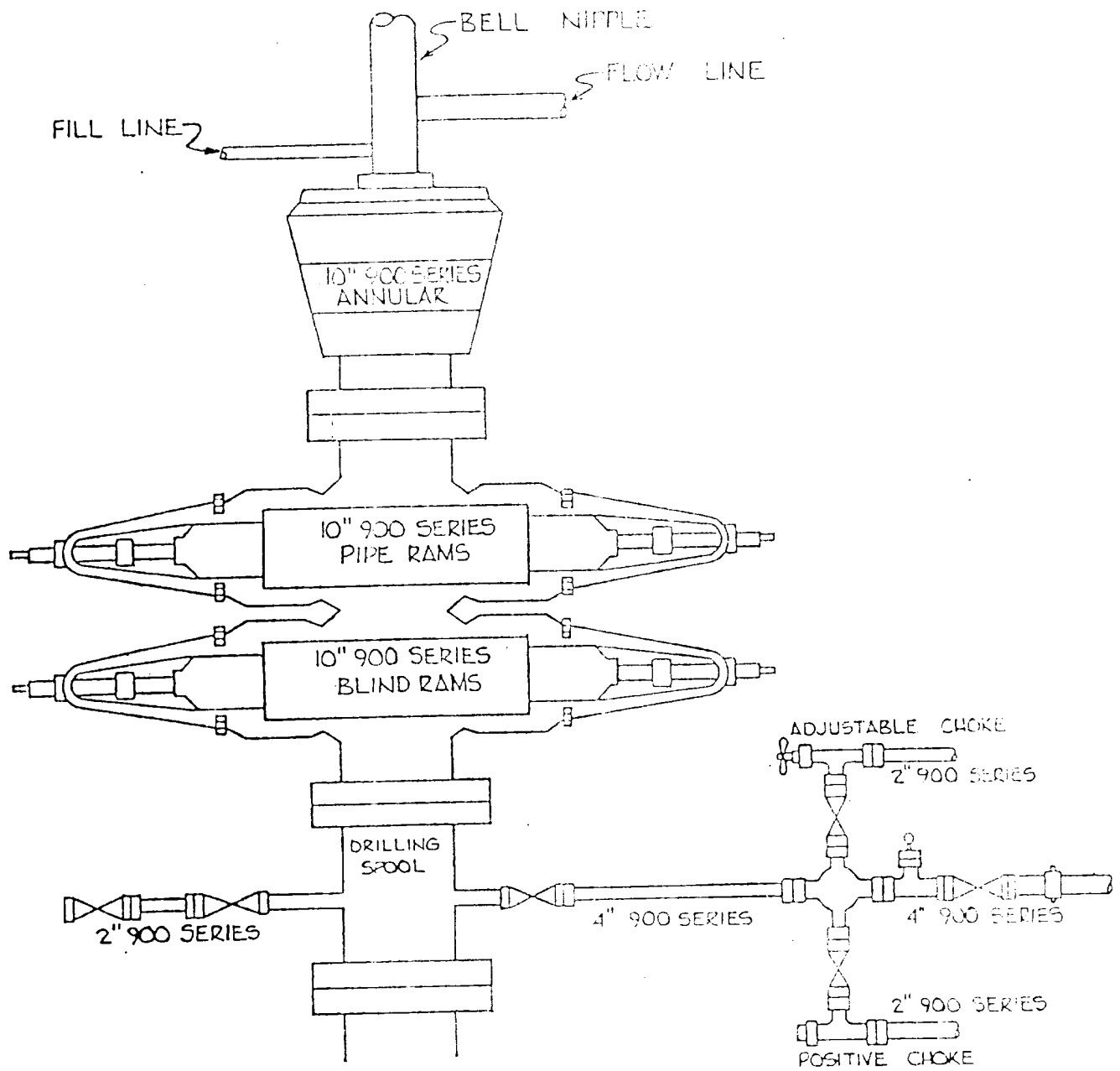
Upper Bone Springs - 8500' - 8620'

Mud Program:

Surface to 450' - gel and lime for hole conditions  
to 450'.  
450 - 4500' - brine. Add lime and mud-seal for  
seepage 10 pH.  
4500' - TD - cut brine with lime and mud-seal for  
seepage.

Logging:

Spectral Density - Dual Spaced Neutron - 10' to surface.  
Guard - Micro Guard through indicated porosity and shows.



Recd 12/23/56

ETP