

Submit 3 Copies
to Appropriate
District Office

State of New Mexico
Energy, Minerals and Natural Resources Department

Form C-103
Revised 1-1-89

OIL CONSERVATION DIVISION

DISTRICT I
P.O. Box 1980, Hobbs NM 88241-1980

2040 Pacheco St.
Santa Fe, NM 87505

DISTRICT II
P.O. Drawer DD, Artesia, NM 88210

DISTRICT III
1000 Rio Brazos Rd., Aztec, NM 87410

WELL API NO. 30-025-34760
5. Indicate Type of Lease STATE <input checked="" type="checkbox"/> FEE <input type="checkbox"/>
6. State Oil & Gas Lease No.
7. Lease Name or Unit Agreement Name Goodwin State '10'
8. Well No. 1
9. Pool name or Wildcat Monument: Abo, Drinkard
10. Elevation (Show whether DF, RKB, RT, GR, etc.) KB: 3746' GL: 3734'

SUNDRY NOTICES AND REPORTS ON WELLS
(DO NOT USE THIS FORM FOR PROPOSALS TO DRILL OR TO DEEPEN OR PLUG BACK TO A DIFFERENT RESERVOIR. USE "APPLICATION FOR PERMIT" (FORM C-101) FOR SUCH PROPOSALS.)

1. Type of Well:
OIL WELL GAS WELL OTHER **Dry Hole**

2. Name of Operator
Marathon Oil Company

3. Address of Operator
P.O. Box 2490 Hobbs, NM 88240

4. Well Location
Unit Letter **L** : **2160** Feet From The **South** Line and **330** Feet From The **West** Line
Section **31** Township **18-S** Range **37-E** NMPM **Lea** County

11. Check Appropriate Box to Indicate Nature of Notice, Report, or Other Data

NOTICE OF INTENTION TO:

PERFORM REMEDIAL WORK PLUG AND ABANDON

TEMPORARILY ABANDON CHANGE PLANS

PULL OR ALTER CASING

OTHER: _____

SUBSEQUENT REPORT OF:

REMEDIAL WORK ALTERING CASING

COMMENCE DRILLING OPNS. PLUG AND ABANDONMENT

CASING TEST AND CEMENT JOB

OTHER: _____

12. Describe Proposed or Completed Operations (Clearly state all pertinent details, and give pertinent dates, including estimated date of starting any proposed work) SEE RULE 1103.

Marathon Oil Company plans to P&A this well. The well has no recompletion potential. Procedure to P&A this well is attached.

THE COMMISSION MUST BE NOTIFIED 20
DAYS PRIOR TO THE BEGINNING OF
PLUGGING OPERATIONS FOR THE WELL
TO BE APPROVED

I hereby certify that the information above is true and complete to the best of my knowledge and belief.

SIGNATURE *Andrew Schwandt* TITLE Production Engineer DATE 6-20-00

TYPE OR PRINT NAME Andrew Schwandt TELEPHONE NO. 505-393-7106

(This space for State Use)

APPROVED BY _____ TITLE _____ DATE _____

CONDITIONS OF APPROVAL, IF ANY:

5
C

L

L

Goodwin State '10' No. 1

API#: 30-025-34760
2160' FSL & 330' FWL
Section 31, T-18S & R-37E
Monument Field
Lea County, New Mexico

AFE No.: 309599 **Date:** June 23, 00

Purpose: P&A

Status: Temporarily Abandoned.

Elevation: TD: 7,792' PBDT: 6,715' (CIBP w/ 35' cmt) KB: 3,746' GL: 3,734'

Surface Casing: 9-5/8" 36# K-55 LT&C @ 1,298'. Cemented w/ 705 sx. Circulated 110 sx to surface.

Production: 5-1/2" 15.5/17# N-80 LT&C @ 7,792'; w/ float collar @ 7,699' and DV tool @ 4,808'. Cemented in two stages. 1st stage w/ 685 sx & 2nd stage w/ 1325 sx. Circulated cement to surface in both stages.

Perforations: Abo 7,679' – 7,699' (below CIBP)
7,634' – 7,659' (squeezed)
7,575' – 7,595', 7,382' – 7,324' (below CIBP)
Drinkard 6,820' – 7,047' (below CIBP)

PROCEDURE:

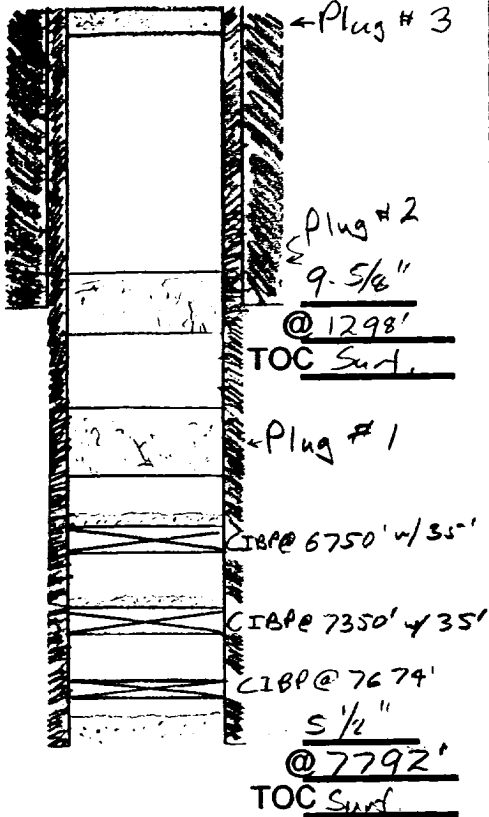
1. MIRU PU.
2. NU manual BOPE.
3. PU & RIH w/ workstring.
4. Displace wellbore w/ 9.5 lb/gal mud from top of cement.
5. PU and LD tbg. to 4,315'.
6. Spot a cement plug from 4,315' – 4,215'. – TAG
7. PU and LD tbg. to 1,482'.
8. Spot a cement plug from 1,260' – 1,482'. WOC
9. Tag TOC.
10. PU and LD tbg. to set surface plug (10 sx or 60' whichever is greater).
11. ND BOPE.
12. Cut off casing and set a dry hole marker as required.
13. Return wellhead to MOC Hobbs yard.

PLUGGING & ABANDONMENT WORKSHEET (2 STRING CSNG)

OPERATOR Marathon Oil Co.

LEASENAME Goodwin State

WELL # 1
 SECT 31 TWN 18-S RNG 37-E
 FROM 2160 #/S L 330 #/W L
 TD: 7792' FORMATION @ TD Abo
 PBTD: 6715' FORMATION @ PBTD Drinkard



	SIZE	SET @	TOC	TOC DETERMINED BY	
SURFACE	9-5/8"	1298'	Surf.	Circ.	
INTMED 1					
INTMED 2					
PROD	5-1/2"	7792'	Surf.	Circ.	
	SIZE	TOP	BOT	TOC	DETERMINED BY
LINER 1					
LINER 2					
CUT & PULL @			TOP - BOTTOM		
INTMED 1			PERFS	None -	
INTMED 2			OPENHOLE	-	
PROD					

***REQUIRED PLUGS DISTRICT I**

RUSTLER (ANHYD)	
YATES	
QUEEN	
GRAYBURG	
SAN ANDRES	
CAPTAN REEF	
DELAWARE	
BELL CANYON	
CHERRY CANYON	
BRUSHY CANYON	
BONE SPRING	
GLORIETA	
BLINEBRY	
TUBB	
DRINKARD	
ABO	
WC	
PENN	
STRAWN	
ATOKA	
MORROW	
MISS	
DEVONIAN	

PLUG	TYPE PLUG	SACKS CMNT	DEPTH
EXAMPLES			
PLUG #1	OH	35 SXS	6400'
PLUG #2	SHOE	50 SXS	5350'-5450'
PLUG #3	CIBP/35'		4800'
PLUG #5	CIBP	25 SXS	4800'
PLUG #4	STUB	50 SXS	3600'-3700'
PLUG #5	RETRN SQZ	200 SXS	400'
PLUG #6	SURF	10 SXS	0-10'
PLUG #1	CH	25 SX	4165'-4365'
PLUG #2	Shoe/Salt	27 SX	1260'-1482'
PLUG #3	Surf	10 SX	0-60'
PLUG #4			
PLUG #5			
PLUG #6			
PLUG #7			
PLUG #8			
PLUG #9			
PLUG #10			
PLUG #			
PLUG #			

TD 7792'