

COUNTY Lea FIELD Undesignated STATE N.M. NO. _____
 OPR Big "6" Drilling Company MAP _____
 NO. 1 LSE. Jackson, Ora et al
 SEC. 5 T. 19S R. 35E SUR. _____ CO-ORD. _____
 LOC. 1980' fr N Line & 660' fr W Line of Sec. EL. 3932.8

MI.	FROM	CLASS.	FORMATION	DATUM	FORMATION	DATUM
SPUD	6-18-63	COMP	8-15-63			
IRT	4500 gals acid	Spl.	B Spgs Poro			
				10127		
CSG & SX		LOG:	B Spgs 7810			
	13 3/8" 400' 385		B Spgs Poro			
	8 5/8" 4004' 350			10127		
	4 1/2" 10292' 140		Wolfc ls			
TBG. DEPTH		SIZE		10760		
LOGS EL GR RA IND HC A						
			TD	10841'	PB	10202'

PROD INT.	(DAILY RATE)	BS&W	GH	GOR	GTY	C. P.	T. P.	HRS. TEST
10140-170'	Flo. 516 BO		1/4"	750	38.9	Pkr	850#	24'
(Bone Springs)								

Distribution limited and publication prohibited by subscribers' agreement.
 Reproduction rights reserved by Williams & Lea Scouting Service, Inc.

CONT. Cactus Drlg. Co. PROP DEPTH 10,200' TYPE _____
 DATE _____

F.R. 6-13-63, Bone Springs. Oper's Elev. 3920' GL.
 PD 10,200' RT - Cactus Drlg. Co., Contractor.

6-24-63 Drlg. 1585' anhy.
 7-1-63 TD 4005', WOC.
 7-8-63 Drlg. 5973'
 7-15-63 Drlg. 8028'.
 7-22-63 Drlg. 9202'.
 7-30-63 Drlg. 10162'.
 8-6-63 Drlg. 10723'.
 DST 10118-164', open 2 hrs, GTS 7"; after 15", fld.
 300 MCFGPD decreasing to TSTM after 90", rev out
 6200' GCO (Gravity 38.), rec 90' Mud below sub,
 30" ISIP 4257#, FP 161-1040#, 30" FSIP 4212#.

8-13-63 TD 10841', PB 10292', fishing tubing & Perf Gun.
 DST (Wolfcamp) 10763-841', open 1 hr 22 mins,
 rec 35' SO&GCM + 30' OCM, 30" ISIP 2497#, FP
 73-73#, 15" FSIP 142# ?
 Perf 60 shots 10140-170'.

Big "6" Drilling Co., #1 Jackson, Ora et al - Sec. 5-19S-
35E

8-19-63 TD 10841', PB 10202', Holding for NMOCC Potential
WW/500 gals MA, Treated 4000 gals gelled acid
Fld. 516 BNO in 24 hrs thru 1/4" choke, TP
850#, GOR 700.

8-26-63 TD 10841', PB 10202', COMPLETED.

NUMBER OF COPIES RECEIVED	
DISTRIBUTION	
SANTA FE	
FILE	
U.S.G.S	
LAND OFFICE	
TRANSPORTER	OIL
	GAS
PRODUCTION OFFICE	
OPERATOR	

NEW MEXICO OIL CONSERVATION COMMISSION
WELL LOCATION AND ACREAGE DEDICATION PLAT
 SEE INSTRUCTIONS FOR COMPLETING THIS FORM ON THE REVERSE SIDE

FORM C-128
 Revised 5/1/57

HOBBS OFFICE O. C. C.
NOV 7 3 09 PM '63

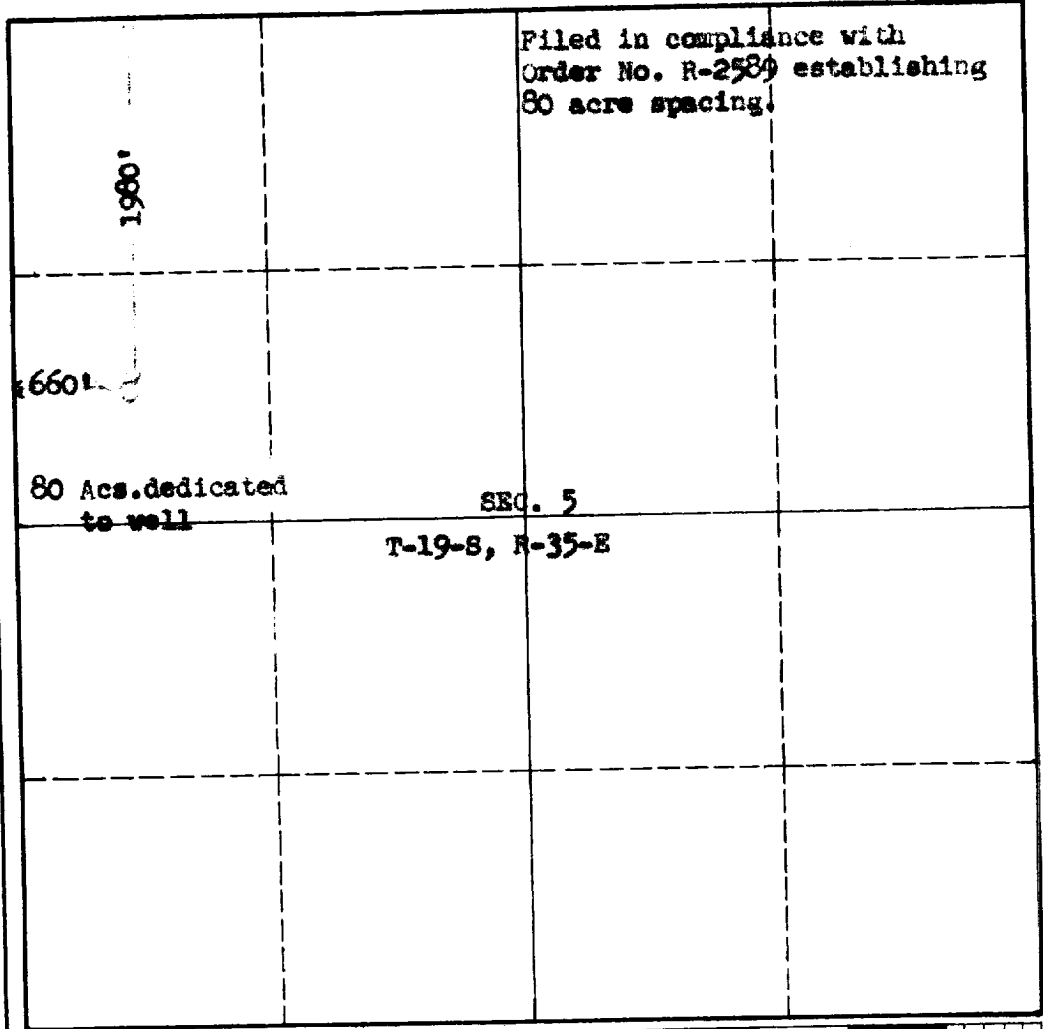
SECTION A

Operator BIG "6" DRILLING COMPANY		Lease ORA JACKSON, et al		Well No. 1
Unit Letter E	Section 5	Township 19 South	Range 35 East	County Lea
Actual Footage Location of Well: 660 feet from the West Section line and 1,980 feet from the North Section line of Sec. 5				
Ground Level Elev. 3920	Producing Formation Bone Springs	Pool Scharb-Bone Springs	Dedicated Acreage: 80 Acres	

1. Is the Operator the only owner in the dedicated acreage outlined on the plat below? YES NO . ("Owner" means the person who has the right to drill into and to produce from any pool and to appropriate the production either for himself or for himself and another. (65-3-29 (e) NMSA 1935 Comp.)
2. If the answer to question one is "no," have the interests of all the owners been consolidated by communitization agreement or otherwise? YES NO . If answer is "yes," Type of Consolidation _____
3. If the answer to question two is "no," list all the owners and their respective interests below:

Owner	Land Description

SECTION B



CERTIFICATION

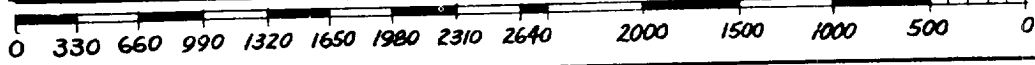
I hereby certify that the information in SECTION A above is true and complete to the best of my knowledge and belief.

Charles B. Bengel

Name	Secretary-Treasurer
Position	Big "6" Drilling Co.
Company	November 5, 1963
Date	

I hereby certify that the well location shown on the plat in SECTION B was plotted from field notes of actual surveys made by me or under my supervision, and that the same is true and correct to the best of my knowledge and belief.

Date Surveyed	
Registered Professional Engineer and/or Land Surveyor	
Certificate No.	



2021 10 12 10 27 AM

INSTRUCTIONS FOR COMPLETION OF FORM C-128

1. Operator shall furnish and certify to the information called for in Section A.
2. Operator shall outline the dedicated acreage for *both* oil and gas wells on the plat in Section B.
3. A registered professional engineer or land surveyor registered in the State of New Mexico or approved by the Commission shall show on the plat the location of the well and certify this information in the space provided.
4. All distances shown on the plat must be from the outer boundaries of the Section.
5. If additional space is needed for listing owners and their respective interests as required in question 3 of Section A, please use space below.