

NO. OF COPIES RECEIVED		
DISTRIBUTION		
SANTAFE		
FILE		
U.S.G.S.		
LAND OFFICE		
OPERATOR		

NEW MEXICO OIL CONSERVATION COMMISSION

Form C-101  
Revised 1-1-65

5A. Indicate Type of Lease  
STATE  FEE

5. State Oil & Gas Lease No.  
B - 1520

APPLICATION FOR PERMIT TO DRILL, DEEPEN, OR PLUG BACK

1a. Type of Work			7. Unit Agreement Name		
b. Type of Well DRILL <input checked="" type="checkbox"/> DEEPEN <input type="checkbox"/> PLUG BACK <input type="checkbox"/> OIL WELL <input checked="" type="checkbox"/> GAS WELL <input type="checkbox"/> OTHER <input type="checkbox"/> SINGLE ZONE <input checked="" type="checkbox"/> MULTIPLE ZONE <input type="checkbox"/>			8. Farm or Lease Name Bridges State		
2. Name of Operator Mobil Oil Corporation			9. Well No. 167		
3. Address of Operator P. O. Box 633, Midland, Texas, 79701			10. Field and Pool, or Wildcat Vacuum		
4. Location of Well UNIT LETTER <u>0</u> LOCATED <u>1980</u> FEET FROM THE <u>East</u> LINE AND <u>660</u> FEET FROM THE <u>South</u> LINE OF SEC. <u>15</u> TWP. <u>17S</u> RGE. <u>34E</u> NMPM			12. County Lea		
19. Proposed Depth 4800		19A. Formation San Andres		20. Rotary or C.T. Rotary	
21. Elevations (Show whether DF, RT, etc.) Ground - 4045		21A. Kind & Status Plug. Bond On File		22. Approx. Date Work will start September 17, 1971	

23. PROPOSED CASING AND CEMENT PROGRAM

SIZE OF HOLE	SIZE OF CASING	WEIGHT PER FOOT	SETTING DEPTH	SACKS OF CEMENT	EST. TOP
12 1/4"	8 5/8"	20#	350	Circulate	Surface
7 7/8"	5 1/2"	15.5#	4800	Circulate	Surface

Mud Program  
 0 - 350' - Spud Mud  
 350' - 1600' - Fresh Water  
 1600' - 4300' - Brine Water  
 4300' - T.D. - Brine Water, Salt Gel & Starch

Logging Program  
 GR-SNP-CAL - Surface to total depth

12-13-71

8 5/8

IN ABOVE SPACE DESCRIBE PROPOSED PROGRAM: IF PROPOSAL IS TO DEEPEN OR PLUG BACK, GIVE DATA ON PRESENT PRODUCTIVE ZONE AND PROPOSED NEW PRODUCTIVE ZONE. GIVE BLOWOUT PREVENTER PROGRAM, IF ANY.

I hereby certify that the information above is true and complete to the best of my knowledge and belief.

Signed A. D. Bond A. D. Bond Title Proration Staff Assistant Date September 8, 1971

(This space for State Use)

APPROVED BY [Signature] TITLE SUPERVISOR DISTRICT I DATE SEP 13 1971

CONDITIONS OF APPROVAL, IF ANY:

RECEIVED

SEP 17 1971

OIL CONSERVATION COMM.  
WASDC, DIST. 11.

NEW MEXICO OIL CONSERVATION COMMISSION  
WELL LOCATION AND ACREAGE DEDICATION PLAT

Form C-102  
Supersedes C-128  
Effective 1-1-65

All distances must be from the outer boundaries of the Section.

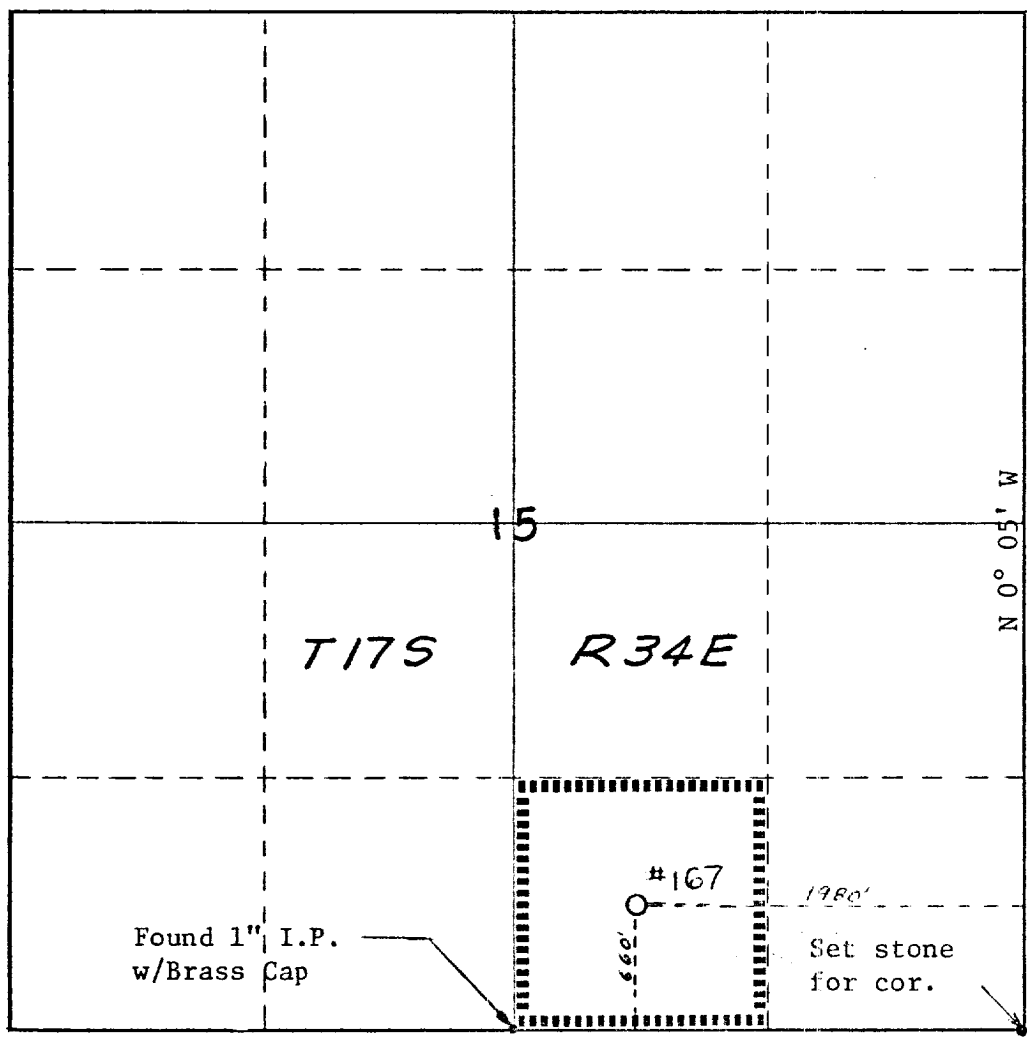
Operator <b>Mobil Oil Corporation</b>			Lease <b>Bridges State</b>		Well No. <b>167</b>
Unit Letter <b>0</b>	Section <b>15</b>	Township <b>17S</b>	Range <b>34E</b>	County <b>Lea</b>	
Actual Footage Location of Well: <b>1980</b> feet from the <b>East</b> line and <b>660</b> feet from the <b>South</b> line					
Ground Level Elev. <b>4045</b>	Producing Formation <b>San Andres</b>		Pool <b>Vacuum</b>	Dedicated Acreage: <b>40</b> Acres	

1. Outline the acreage dedicated to the subject well by colored pencil or hachure marks on the plat below.
2. If more than one lease is dedicated to the well, outline each and identify the ownership thereof (both as to working interest and royalty).
3. If more than one lease of different ownership is dedicated to the well, have the interests of all owners been consolidated by communitization, unitization, force-pooling, etc?

Yes  No If answer is "yes," type of consolidation \_\_\_\_\_

If answer is "no," list the owners and tract descriptions which have actually been consolidated. (Use reverse side of this form if necessary.) \_\_\_\_\_

No allowable will be assigned to the well until all interests have been consolidated (by communitization, unitization, forced-pooling, or otherwise) or until a non-standard unit, eliminating such interests, has been approved by the Commission.



**CERTIFICATION**

*I hereby certify that the information contained herein is true and complete to the best of my knowledge and belief.*

*A. D. Bond*

Name A. D. Bond

Position Proration Staff Assistant

Company Mobil Oil Corporation

Date September 8, 1971

*I hereby certify that the well location shown on this plat was plotted from field notes, actual surveys made by me or under my supervision, and that the same is true and correct to the best of my knowledge and belief.*

*Curtis A. Callaway*

Date Surveyed September 7, 1971

Registered Professional Engineer and/or Land Surveyor

**Curtis A. Callaway**

Certificate No. 3342

173

RECEIVED

SEP 13 1971

OIL CONSERVATION COMM.  
HOBBES, N. M.