

N. OF COPIES RECEIVED	
DISTRIBUTION	
SANTA FE	
FILE	
U.S.G.S.	
LAND OFFICE	
OPERATOR	

NEW MEXICO OIL CONSERVATION COMMISSION

Form C-101
Revised 1-1-65 *3-17584-10*

5A. Indicate Type of Lease
STATE FEE
5. State Oil & Gas Lease No.
B-1520

APPLICATION FOR PERMIT TO DRILL, DEEPEN, OR PLUG BACK

1a. Type of Work		7. Unit Agreement Name	
b. Type of Well DRILL <input checked="" type="checkbox"/> DEEPEN <input type="checkbox"/> PLUG BACK <input type="checkbox"/> OIL WELL <input checked="" type="checkbox"/> GAS WELL <input type="checkbox"/> OTHER _____ SINGLE ZONE <input checked="" type="checkbox"/> MULTIPLE ZONE <input type="checkbox"/>		8. Farm or Lease Name Bridges-State	
2. Name of Operator Mobil Oil Corporation		9. Well No. 177	
3. Address of Operator P. O. Box 633, Midland, Texas 79701		10. Field and Pool, or Wildcat Vacuum	
4. Location of Well UNIT LETTER I LOCATED 1650 FEET FROM THE South LINE AND 330 FEET FROM THE East LINE OF SEC. 26 T17-S R34-E S34-PM		12. County Lea	
21. Elevations (Show whether DF, RT, etc.) 4012'-Ground		19. Formation Grayburg-San Andres	20. Rotary or C.T. Rotary
21A. Kind & status Plug. Perm On File		22. Approx. Date Work will start 10-28-73	
23.		22. Approx. Date Work will start	

PROPOSED CASING AND CEMENT PROGRAM

SIZE OF HOLE	SIZE OF CASING	WEIGHT PER FOOT	SETTING DEPTH	SACKS OF CEMENT	EST. TOP
12-1/4"	8-5/8"	20#-Misco	350	Circulate	Surface
7-7/8"	5-1/2"	14#-J-55	4850	Circulate	Surface

BLOWOUT PREVENTER PROGRAM:

Casing String	Equip. Size X API Series	No. & Type	Test Pressure PSI
Surface	8" or 10" 600	1-pipe & 1-Blank	1000

APPROVAL VALID
FOR 90 DAYS UNLESS
DRILLING COMMENCED,
EXPIRES 1-26-74

IN ABOVE SPACE DESCRIBE PROPOSED PROGRAM; IF PROPOSAL IS TO DEEPEN OR PLUG BACK, GIVE DATA ON PRESENT PRODUCTIVE ZONE AND PROPOSED NEW PRODUCTIVE ZONE, GIVE BLOWOUT PREVENTER PROGRAM, IF ANY.

I hereby certify that the information above is true and complete to the best of my knowledge and belief.

Signed *A.D. Bond* **A. D. Bond** Title **Proration Staff Assistant** Date **October 23, 1973**

APPROVED BY *[Signature]* TITLE **SECRETARY** DATE **OCT 26 1973**

CONDITIONS OF APPROVAL, IF ANY:

NEW MEXICO OIL CONSERVATION COMMISSION
WELL LOCATION AND ACREAGE DEDICATION PLAT

Form C-102
Supersedes C-128
Effective 1-1-65

All distances must be from the outer boundaries of the section.

Operator Mobil Oil Corporation		State Bridges-State		Well No. 177
Unit Letter I	Section 26	Township 17-S	Range 34-E	County Lea
Actual Footage Location of Well: 1650 feet from the South boundary 330 feet from the East line				
Ground Level Elev. 4012	Producing Formation Grayburg-San Andres	Flow Vacuum	Dedicated Acreage: 40 Acres	

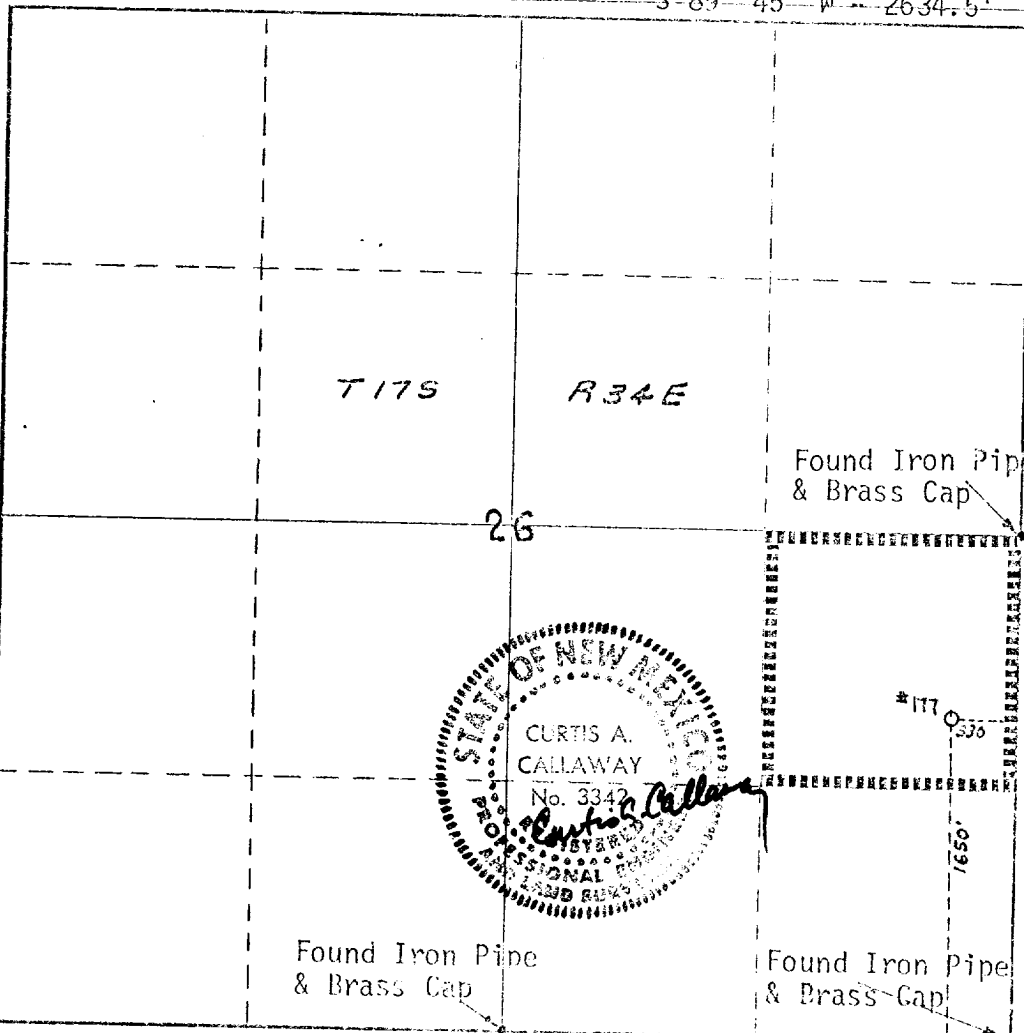
1. Outline the acreage dedicated to the subject well by colored pencil or hachure marks on the plat below.
2. If more than one lease is dedicated to the well, outline each and identify the ownership thereof (both as to working interest and royalty).
3. If more than one lease of different ownership is dedicated to the well, have the interests of all owners been consolidated by communitization, unitization, force-pooling, etc?

Yes No If answer is "yes," type of consolidation _____

If answer is "no," list the owners and tract descriptions which have actually been consolidated. (Use reverse side of this form if necessary.) _____

No allowable will be assigned to the well until all interests have been consolidated (by communitization, unitization, forced-pooling, or otherwise) or until a non-standard unit, eliminating such interests, has been approved by the Commission.

S-89° 45' W - 2634.5'



CERTIFICATION

I hereby certify that the information contained herein is true and complete to the best of my knowledge and belief.

A. D. Bond
Name
A. D. Bond
Position
Proration Staff Assistant
Company
Mobil Oil Corporation

Date
October 23, 1973

I hereby certify that the well location shown on this plat was plotted from field notes of actual surveys made by me or under my supervision, and that the same is true and correct to the best of my knowledge and belief.

Curtis A. Callaway
Date Surveyed
October 19, 1973
Registered Professional Engineer and Land Surveyor

Curtis A. Callaway

Certificate No.
3342

330 660 990 1320 1650 1980 2310 2640 2970 3300 3630 3960 4290