

UNITED STATES
DEPARTMENT OF THE INTERIOR
BUREAU OF LAND MANAGEMENT

SUNDRY NOTICES AND REPORTS ON WELLS

Do not use this form for proposals to drill or to deepen or reentry to a different reservoir.
Use "APPLICATION FOR PERMIT - " for such proposals

U.S. DEPT. OF THE INTERIOR
BUREAU OF LAND MANAGEMENT
NEW MEXICO 88240
FORM APPROVED
Budget Bureau No. 1004-0135
Expires: March 31, 1993

5. Lease Designation and Serial No.
NM-40452-94191

6. If Indian, Allottee or Tribe Name
mt

SUBMIT IN TRIPLICATE

1. Type of Well
 Oil Well Gas Well Other

2. Name of Operator
Santa Fe Energy Operating Partners, L.P.

3. Address and Telephone No.
550 W. Texas, Suite 1330, Midland, TX 79701 (915) 687-3551

4. Location of Well (Footage, Sec., T., R., M., or Survey Description)
660' FNL and 1980' FEL, Sec. 14, T-18S, R-32E

7. If Unit or CA, Agreement Designation

8. Well Name and No.
Shinnery 14 Fed 9

9. API Well No.

10. Field and Pool, or exploratory Area
Wolfcamp

11. County or Parish, State
Lea Co., NM

12. CHECK APPROPRIATE BOX(S) TO INDICATE NATURE OF NOTICE, REPORT, OR OTHER DATA

TYPE OF SUBMISSION	TYPE OF ACTION
<input checked="" type="checkbox"/> Notice of Intent	<input type="checkbox"/> Abandonment
<input type="checkbox"/> Subsequent Report	<input type="checkbox"/> Recompletion
<input type="checkbox"/> Final Abandonment Notice	<input type="checkbox"/> Plugging Back
	<input type="checkbox"/> Casing Repair
	<input type="checkbox"/> Altering Casing
	<input checked="" type="checkbox"/> Other <u>Repair well</u>
	<input type="checkbox"/> Change of Plans
	<input type="checkbox"/> New Construction
	<input type="checkbox"/> Non-Routine Fracturing
	<input type="checkbox"/> Water Shut-Off
	<input type="checkbox"/> Conversion to Injection
	<input type="checkbox"/> Dispose Water

(Note: Report results of multiple completion on Well Completion or Recompletion Report and Log form.)

13. Describe Proposed or Completed Operations (Clearly state all pertinent details, and give pertinent dates, including estimated date of starting any proposed work. If well is directionally drilled, give subsurface locations and measured and true vertical depths for all markers and zones pertinent to this work.)*

NO NEW SURFACE DISTURBANCE WILL BE REQUIRED

1. Remove dry hole marker. Install wellhead.
2. Drill out cement plugs to 2035' using workover rig with steel pits.
3. Tie 5-1/2" casing back to surface. Set in slips in wellhead.
4. Clean out to 11,500'
5. Attempt to pump into old perms at 10,484'. Squeeze if necessary.
6. Perforate Wolfcamp 11,050'-11,192'.
7. Swab test. Acidize if necessary.
8. Place well on production.

Note: This is not a re-entry into a different reservoir.

CRIP SURF NO. 20290
PROPERTY NO. 9989
POOL CODE 13320
EXP. DATE 1-6-95
API NO. 30-625-27769

14. I hereby certify that the foregoing is true and correct
Signed Michael R. Burtner Title Division Operations Manager Date 12/16/94

(This space for Federal or State office use)
Approved by (ORIG. SGD.) RICHARD L. MANUS Title AREA MANAGER Date DEC 29 1994
Conditions of approval, if any:

Title 18 U.S.C. Section 1001, makes it a crime for any person knowingly and willfully to make to any department or agency of the United States any false, fictitious or fraudulent statements or representations as to any matter within its jurisdiction.

DISTRICT I
P.O. Box 1980, Hobbs, NM 88240

State of New Mexico
Energy, Minerals and Natural Resources Department

Form C-102
Revised February 10, 1994
Instruction on back
Submit to Appropriate District Office
State Lease - 4 Copies
Fee Lease - 3 Copies

DISTRICT II
P.O. Drawer DD, Artesia, NM 86210

OIL CONSERVATION DIVISION

DISTRICT III
1000 Rio Brazos Rd., Aztec, NM 87410

P.O. Box 2088
Santa Fe, New Mexico 87504-2088

AMENDED REPORT

WELL LOCATION AND ACREAGE DEDICATION PLAT

API Number 52 1-25-2772	Pool Code 1332E	Pool Name South East Well Pump
Property Code 4989	Property Name SHINNERY 14 FEDERAL	
OGRID No. 2624	Operator Name SANTA FE ENERGY RESOURCES	
		Well Number 9
		Elevation 3830'

Surface Location

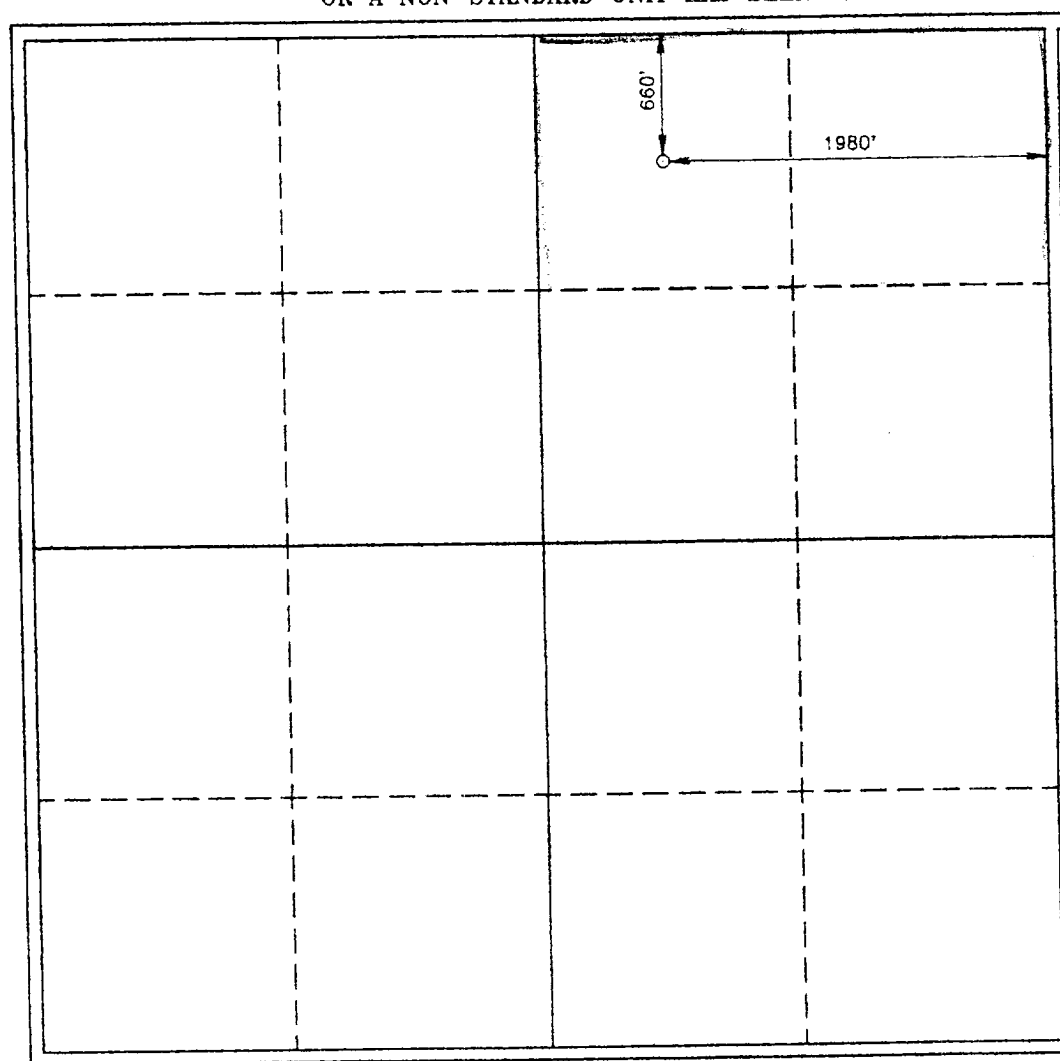
UL or lot No.	Section	Township	Range	Lot Idn	Feet from the	North/South line	Feet from the	East/West line	County
B	14	18S	32E		660	NORTH	1980	EAST	LEA

Bottom Hole Location If Different From Surface

UL or lot No.	Section	Township	Range	Lot Idn	Feet from the	North/South line	Feet from the	East/West line	County

Dedicated Acres 80	Joint or Infill	Consolidation Code	Order No.
-----------------------	-----------------	--------------------	-----------

NO ALLOWABLE WILL BE ASSIGNED TO THIS COMPLETION UNTIL ALL INTERESTS HAVE BEEN CONSOLIDATED OR A NON-STANDARD UNIT HAS BEEN APPROVED BY THE DIVISION



OPERATOR CERTIFICATION

I hereby certify that the information contained herein is true and complete to the best of my knowledge and belief.

Michael R. Burton
Signature

MICHAEL R. BURTON
Printed Name

Division Manager Operations
Title

DEC 16, 1994
Date

SURVEYOR CERTIFICATION

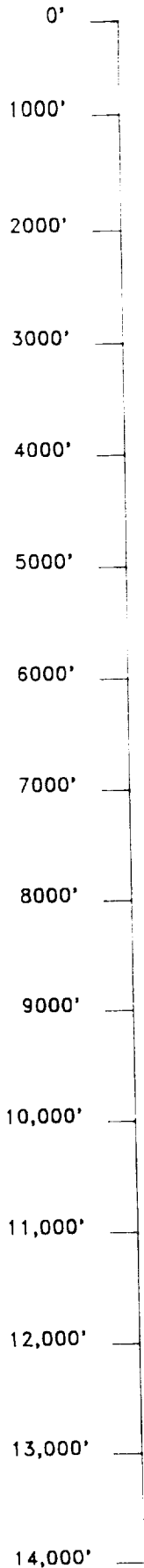
I hereby certify that the well location shown on this plat was plotted from field notes of actual surveys made by me or under my supervision and that the same is true and correct to the best of my knowledge.

NOVEMBER 16, 1994
Date Surveyed

[Signature]
Signature & Seal of Professional Surveyor

W.O. Num. 94-11-1979

Certificate No. JOHN W. WEST, 676
RONALD J. EIDSON, 3239



30sx cement plug set at 50'
Top of plug at surface. Well head
cut off. P&A marker installed.

40sx cement plug set at 725'.
Estimated top of plug at 615'.

Ran pipe recovery log. 5 1/2" csg free
at 2200'. Ran 4 1/2" jet cutter.
Cut csg at 2160'. Recovered 2160' csg.
Ran tubing to 2210'. Set 21sx plug.
Tag at 2145'. Set 40sx plug. Top of
plug estimated to be at 2035'.

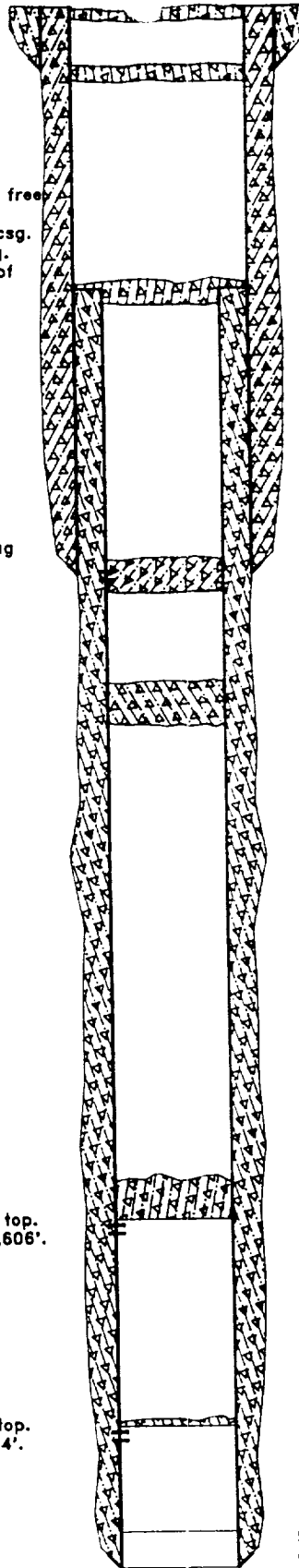
30sx cement plug set at 5110'. Tag
at 4769'.
Delaware perforations 4962-72',
4980-90'.

30sx cement plug set at 6250'.
Estimated top of plug at 5980'.

CIBP at 10,484'. 203' cement on top.
Wolfcamp perforations 10,598-10,606'.

CIBP at 12,250'. 35' cement on top.
Strawn perforations 12,334-12,354'.

CIBP at 13,150'



13 3/8" at 674' Cement
circulated to surface.

9 5/8" at 4900'. Cement
circulated to surface.

5 1/2" at 13,430'. Top of cement
at 2200'±

RECEIVED

JAN 13 2005

OOD ROEBS
OFFICE

Exhibit A
Operations Plan
Santa Fe Energy Operating Partners, L.P.
Shinnery "14" Federal No. 9
Section 14, T-18-S, R-32-E
Lea County, New Mexico

1. Remove P & A marker.
2. Weld on wellhead and nipple up BOP.
3. Pick up 8-3/4" bit and drill out cement plugs from 0 to 50', from 615' to 725' and from 2035' to the top of the 5-1/2" casing at 2160'.
4. Dress top of 5-1/2" casing at 2160' with a mill.
5. Run a 5-1/2" casing patch on 5-1/2" 17 ppf N-80 LT&C casing and tie the 5-1/2" casing back to the surface.
6. Hang the 5-1/2" casing on slips, install a tubing spool and nipple up a double ram and annular BOP system with choke manifold.
7. Test the BOP system and casing to 2000 psi with the rig pump.
8. Pick up a 4-3/4" bit and drill out cement plugs from 2160' to 2210', from 4769' to 5110', from 5980' to 6250', from 10281' to 10484' and CIBP set at 10484'. Clean out to ±11400'.
9. Set cement retainer at 10500' and squeeze Wolfcamp perforations at 10598'-10606' with 100 sacks of class "H" cement.
10. Squeeze Delaware perforations at 4962'-4990' with 100 sacks of Class "H" cement.
11. Drill out cement in Delaware perforations and test to 2000 psi.
12. Drill out retainer at 10500' and drill out cement to ±11500'.
13. Test casing to 2000 psi.
14. Perforate and production test the Wolfcamp at 11054' to 11166'.

RECEIVED

JAN 03 1995

O C D HUBBS
OFFICE

