

NEW MEXICO OIL CONSERVATION COMMISSION  
WELL LOCATION AND ACREAGE DEDICATION PLAT

Form O-211  
Supersedes O-211  
Effective 10/1/83

Well location must be from the outer boundary of the section

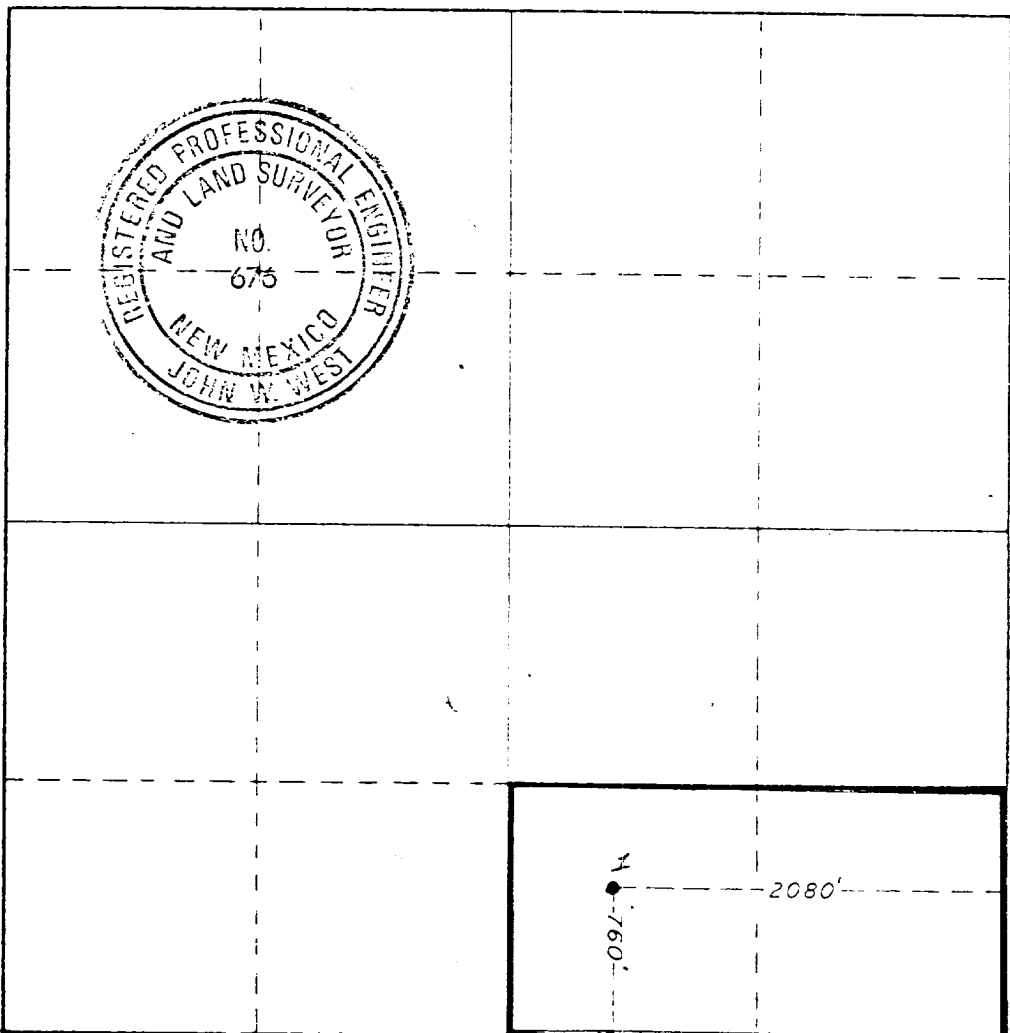
Operator <b>THE SUPERIOR OIL CO.</b>		Lease <b>GOVERNMENT '24'</b>		Acres <b>1</b>
Tract Letter <b>0</b>	Section <b>24</b>	Township <b>19S</b>	Range <b>34E</b>	County <b>LEA</b>
Artificial or Close Location of Well:				
<b>760</b>	feet from the	<b>SOUTH</b>	line and	<b>2080</b>
			feet from the	<b>EAST</b>
Ground Level Elev. <b>3789.6</b>	Producing Formation <b>Bone Spring</b>		Foot <b>Lea</b>	Production Acres <b>80</b>

1. Outline the acreage dedicated to the subject well by colored pencil or hachure marks on the plat below.
2. If more than one lease is dedicated to the well, outline each and identify the ownership thereof (both as to working interest and royalty).
3. If more than one lease of different ownership is dedicated to the well, have the interests of all owners been consolidated by communitization, unitization, force-pooling, etc?

Yes  No If answer is "yes," type of consolidation \_\_\_\_\_

If answer is "no," list the owners and tract descriptions which have actually been consolidated (Use reverse side of this form if necessary.) \_\_\_\_\_

No allowable will be assigned to the well until all interests have been consolidated (by communitization, unitization, forced-pooling, or otherwise) or until a non-standard unit, eliminating such interests, has been approved by the Commission.



CERTIFICATION

I hereby certify that the information contained herein is true and complete to the best of my knowledge and belief.

*G.E. Tate*  
G.E. Tate

Division Operations Supt.

The Superior Oil Company

February 15, 1984

I hereby certify that the well location shown on this plat was plotted from field notes of actual surveys made by me or under my supervision, and that the same is true and correct to the best of my knowledge and belief.

Date Surveyed  
**2/7/84**

Registered Professional Engineer and Land Surveyor

*John W. West*

Certificate No. **JOHN W. WEST** 676

RONALD J. EIDSON, 3239

