

DISTRICT I
 P.O. Box 1980, Hobbs, NM 88241-1980
DISTRICT II
 P.O. Box Drawer DD, Artesia, NM 88211-0719
DISTRICT III
 1000 Rio Brazos Rd., Aztec, NM 87410
DISTRICT IV
 P.O. Box 2088, Santa Fe, NM 87504-2088

State of New Mexico
 Energy, Minerals and Natural Resources Department
OIL CONSERVATION DIVISION
 P.O. Box 2088
 Santa Fe, New Mexico 87504-2088

Form C-101
 Revised February 10, 1994
 Instructions on back
 Submit to Appropriate District Office
 State Lease - 6 Copies
 Fee Lease - 5 Copies

AMENDED REPORT

APPLICATION FOR PERMIT TO DRILL, RE-ENTER, DEEPEN, PLUGBACK, OR ADD A ZONE

¹ Operator Name and Address TEXACO EXPLORATION & PRODUCTION INC. P.O. Box 3109, Midland Texas 79702		² OGRID Number 022351
⁴ Property Code 11122	⁵ Property Name CENTRAL VACUUM UNIT	³ API Number 30-025-34943 ⁶ Well No. 288

⁷ Surface Location									
UI or lot no.	Section	Township	Range	Lot.Idn	Feet From The	North/South Line	Feet From The	East/West Line	County
0	31	17-S	35-E		634	SOUTH	1333	EAST	LEA

⁸ Proposed Bottom Hole Location If Different From Surface									
UI or lot no.	Section	Township	Range	Lot.Idn	Feet From The	North/South Line	Feet From The	East/West Line	County

⁹ Proposed Pool 1 Vacuum Grayburg-San Andres	¹⁰ Proposed Pool 2
------------------------------------------------------------	-------------------------------

¹¹ Work Type Code N	¹² Well Type Code O	¹³ Rotary or C.T. ROTARY	¹⁴ Lease Type Code S	¹⁵ Ground Level Elevation 3885'
¹⁶ Multiple No	¹⁷ Proposed Depth 4850'	¹⁸ Formation Grayburg-San Andres	¹⁹ Contractor	²⁰ Spud Date 02/06/2000

²¹ Proposed Casing and Cement Program					
SIZE OF HOLE	SIZE OF CASING	WEIGHT PER FOOT	SETTING DEPTH	SACKS OF CEMENT	EST. TOP
11"	8 5/8"	24#	1560'	550	Surface
7 7/8"	5 1/2"	15.6#	4850'	900	Surface

²² Describe the proposed program. If this application is to DEEPEN or PLUG BACK give the data on the present productive zone and proposed new productive zone. Describe the blowout prevention program, if any. Use additional sheets if necessary.

CEMENTING PROGRAM:
 SURFACE CASING: 400 SACKS CLASS C w/2% GEL, 2% CACL2 (13.5 PPG, 1.74 CF/S, 9.1 GW/S). F/B 150 SACKS CLASS C w/2% CACL2 (14.8 PPG, 1.34 CF/S, 6.3 GW/S).
 PRODUCTION CASING: 800 SACKS 35/65 POZ CLASS H w/8% GEL, 5% SALT, 1/4# FC (12.8 PPG, 1.94 CF/S, 10.4 GW/S). F/B 100 SACKS CLASS H (15.6 PPG, 1.18 CF/S, 5.2 GW/S).

UNORTHODOX LOCATION
 THERE ARE NO OTHER OPERATORS IN THIS QUARTER-QUARTER SECTION.

Permit Expires 1 Year From Approval Date Unless Drilling Underway

²³ I hereby certify that the rules and regulations of the Oil Conservation Division have been complied with and that the information given above is true and complete to the best of my knowledge and belief.	OIL CONSERVATION DIVISION DISTRICT I SUPERVISOR	
Signature <i>A. Phil Ryan</i>	Approved By:	
Printed Name <i>A. Phil Ryan</i>	Title:	
Title <i>Commission Coordinator</i>	Approval Date: <i>FEB 22 2000</i>	Expiration Date:
Date 01/05/2000	Telephone 688-4605	Conditions of Approval: Attached <input type="checkbox"/>

MP

DISTRICT I
P. O. Box 1980, Hobbs, NM 88240

DISTRICT II
P. O. Drawer 80, Artesia, NM 88210

DISTRICT III
1000 No Brassie Rd., Aztec, NM 87410

DISTRICT IV
P. O. Box 2088, Santa Fe, NM 87504-2088

State of New Mexico
Energy, Minerals and Natural Resources Department

Form C-102
Revised February 10, 1994

OIL CONSERVATION DIVISION
PO Box 2088
Santa Fe, NM 87504-2088

Instructions on back
Submit to Appropriate District Office

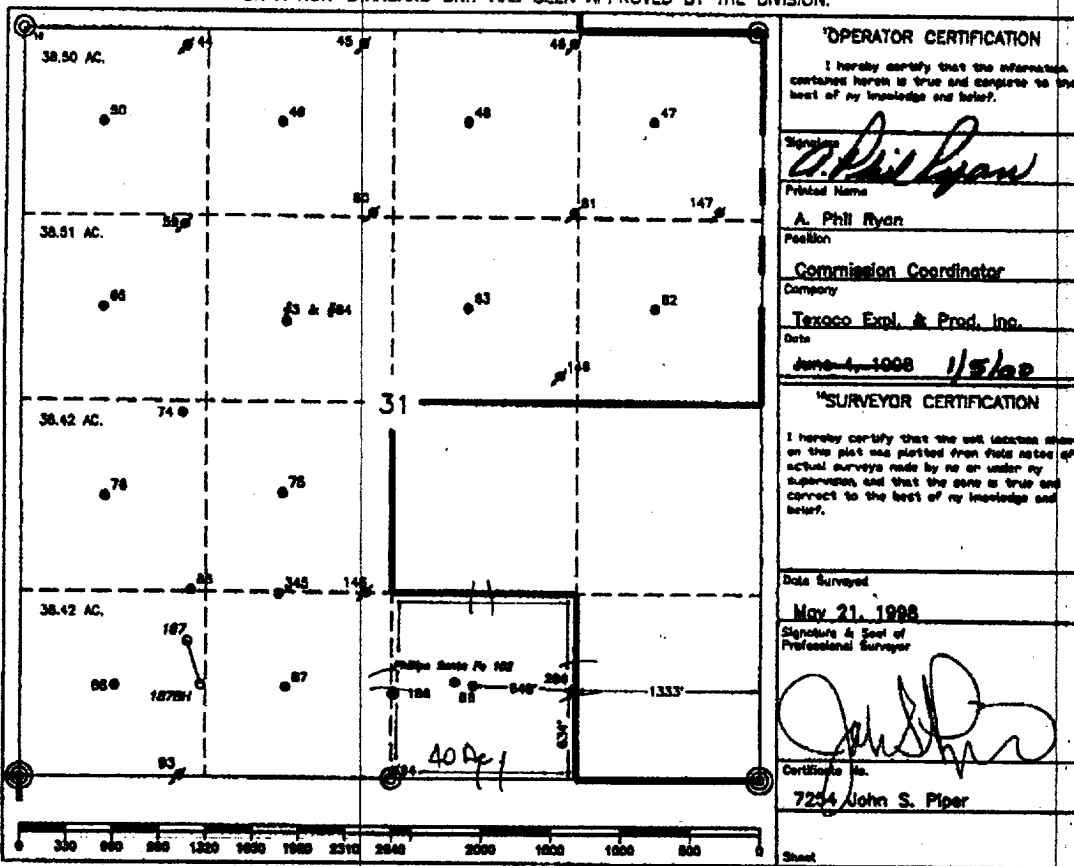
State Lease-4 copies
Fee Lease-3 copies

AMENDED REPORT

WELL LOCATION AND ACREAGE DEDICATION PLAT

API Number 30-025-34943		Well Code 62180		Well Name Vacuum Grayburg-San Andres	
Property Code 1123		Property Name Central Vacuum Unit		Well Number 286	
OSRD No. 22351		Operator Name TEXACO EXPLORATION & PRODUCTION, INC.		Direction 3065'	
10 Surface Location					
UL or lot no.	Section	Township	Range	Lot Idn	Feet from the North/South line
0	31	17-S	35-E	634'	1333'
11 Bottom Hole Location if Different From Surface					
UL or lot no.	Section	Township	Range	Lot Idn	Feet from the North/South line
40					
Dedicated Acre 40		Joint or well		Consolidation Code	
				Order No.	

NO ALLOWABLE WILL BE ASSIGNED TO THIS COMPLETION UNTIL ALL INTERESTS HAVE BEEN CONSOLIDATED OR A NON-STANDARD UNIT HAS BEEN APPROVED BY THE DIVISION.



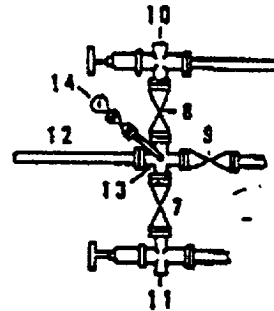
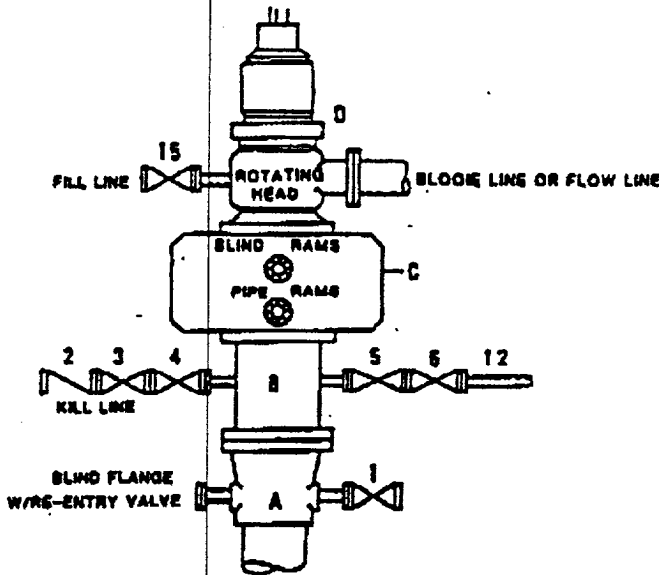
○ = Staked Location ● = Producing Well ● = Injection Well ◊ = Water Supply Well ⊕ = Plugged & Abandon Well
 ⊙ = Found Section Corner, 2 or 3" Iron Pipe & GLO B.C. ○ = Found 1/4 Section Corner, 1" Iron Pipe & GLO B.C.

ADDITIONAL INFORMATION ON THE LOCATION

State Plane Coordinates			
Northing	650,688.66'	Easting	799,649.90'
Latitude	32°47'09.437"	Longitude	103°29'34.076"
Zone	North American Datum	Combined Grid Factor	Coordinate File
East	1983	0.99979145	Buckeye.cr5
Drawing File		Field Book	
CVU_286.dwg		Lea Co. F.B. 17, Pg. 53	

**DRILLING CONTROL
CONDITION II-B 3000 WP
FOR AIR DRILLING OR
WHERE NITROGEN OR AIR BLOWS ARE EXPECTED**

H₂S TRIM REQUIRED
YES _____ NO X



DRILLING CONTROL

MATERIAL LIST - CONDITION II - B

- A Texaco Wellhead
- B 3000# W.P. drilling spool with a 2" minimum flanged outlet for kill line and 3" minimum flanged outlet for choke line.
- C 3000# W.P. Dual ram type preventer, hydraulic operated with 1" steel, 3000# W.P. control lines (where sub-structure height is adequate, 2 - 3000# W.P. single ram type preventers may be utilized).
- D Rotating Head with fill up outlet and extended Blooe Line.
- 2,3,4,7,8 2" minimum 3000# W.P. flanged full opening steel gate valve, or Halliburton Lo Torc Plug valve.
- 1 2" minimum 3000# W.P. back pressure valve.
- 5,6,9 3" minimum 1000# W.P. flanged full opening steel gate valve, or Halliburton Lo Torc Plug valve.
- 12 1" minimum schedule 80, Grade "B", seamless line pipe.
- 13 2" minimum x 3" minimum 3000# W.P. flanged cross.
- 10,11 2" minimum 3000# W.P. adjustable choke bodies.
- 14 Cameron Mud Gauge or equivalent (location optional in choke line).
- 15 2" minimum 3000# W.P. flanged or threaded full opening steel gate valve, or Halliburton Lo Torc Plug valve.



TEXACO, INC.
WISLARD DIVISION
HOUSTON, TEXAS



SCALE	DATE	ISS. NO.	REV. NO.
DRAWN BY			
CHECKED BY			
APPROVED BY			

EXHIBIT C

ABOVE DATE DOES NOT
INDICATE WHEN
CONFIDENTIAL LOGS
WILL BE RELEASED

11/7/00 ELF