

NEW MEXICO OIL CONSERVATION COMMISSION  
SOUTHEAST NEW MEXICO PACKER LEAKAGE TEST

Operator <b>The British-American Oil Producing Company</b>			Lease <b>North Wilson Deep Unit</b>			Well No. <b>1</b>
Location of Well	Unit <b>0</b>	Sec <b>31</b>	Twp <b>20-S</b>	Rge <b>36-E</b>	County <b>Lea</b>	
Name of Reservoir or Pool		Type of Prod (Oil or Gas)	Method of Prod Flow, Art Lift	Prod. Medium (Tbg or Csg)	Choke Size	
Upper Compl	<b>Osudo (Upper Bone Spring)</b>	<b>Oil</b>	<b>Pump</b>	<b>Tubing</b>	<b>None</b>	
Lower Compl	<b>Osudo (Lower Bone Spring)</b>	<b>Oil</b>	<b>Pump</b>	<b>Tubing</b>	<b>None</b>	

FLOW TEST NO. 1

Both zones shut-in at (hour, date): 8:00 a.m., August 9, 1964

Well opened at (hour, date): 8:45 a.m., August 10, 1964

	Upper Completion	Lower Completion
Indicate by ( X ) the zone producing.....		X
Pressure at beginning of test.....	517	4,107
Stabilized? (Yes or No).....	No	Yes
Maximum pressure during test.....	574	---
Minimum pressure during test.....	517	---
Pressure at conclusion of test.....	574	---
Pressure change during test (Maximum minus Minimum).....	57	---
Was pressure change an increase or a decrease?.....	increase	---
Well closed at (hour, date): *	Total Time On Production <u>24 hours</u>	
Oil Production	Gas Production	
During Test: <u>31.65</u> bbls; Grav. <u>33</u> ;	During Test: <u>19</u> MCF; GOR <u>600</u>	

Remarks \* Lower zone production was continued following 24 hour pressure testing of Upper zone.

All pressures shown are bottom hole pressures.

FLOW TEST NO. 2

Well opened at (hour, date): 8:45 a.m., August 11, 1964

	Upper Completion	Lower Completion
Indicate by ( X ) the zone producing.....	X	X
Pressure at beginning of test.....	574	---
Stabilized? (Yes or No).....	Yes	---
Maximum pressure during test.....	---	---
Minimum pressure during test.....	---	---
Pressure at conclusion of test.....	---	---
Pressure change during test (Maximum minus Minimum).....	---	---
Was pressure change an increase or a decrease?.....	---	---
Well closed at (hour, date) *	Total time on Production <u>24 hours</u>	
Oil Production	Gas Production	
During Test: <u>91</u> bbls; Grav. <u>26</u> ;	During Test: <u>72</u> MCF; GOR <u>791</u>	

Remarks \* Upper zone production was continued following 24 hour test period.

I hereby certify that the information herein contained is true and complete to the best of my knowledge.

Approved SEP 1 1964 19  
New Mexico Oil Conservation Commission

By \_\_\_\_\_  
Title \_\_\_\_\_

Operator The British-American Oil Producing Co.

By M.C. Steindorf, Jr.

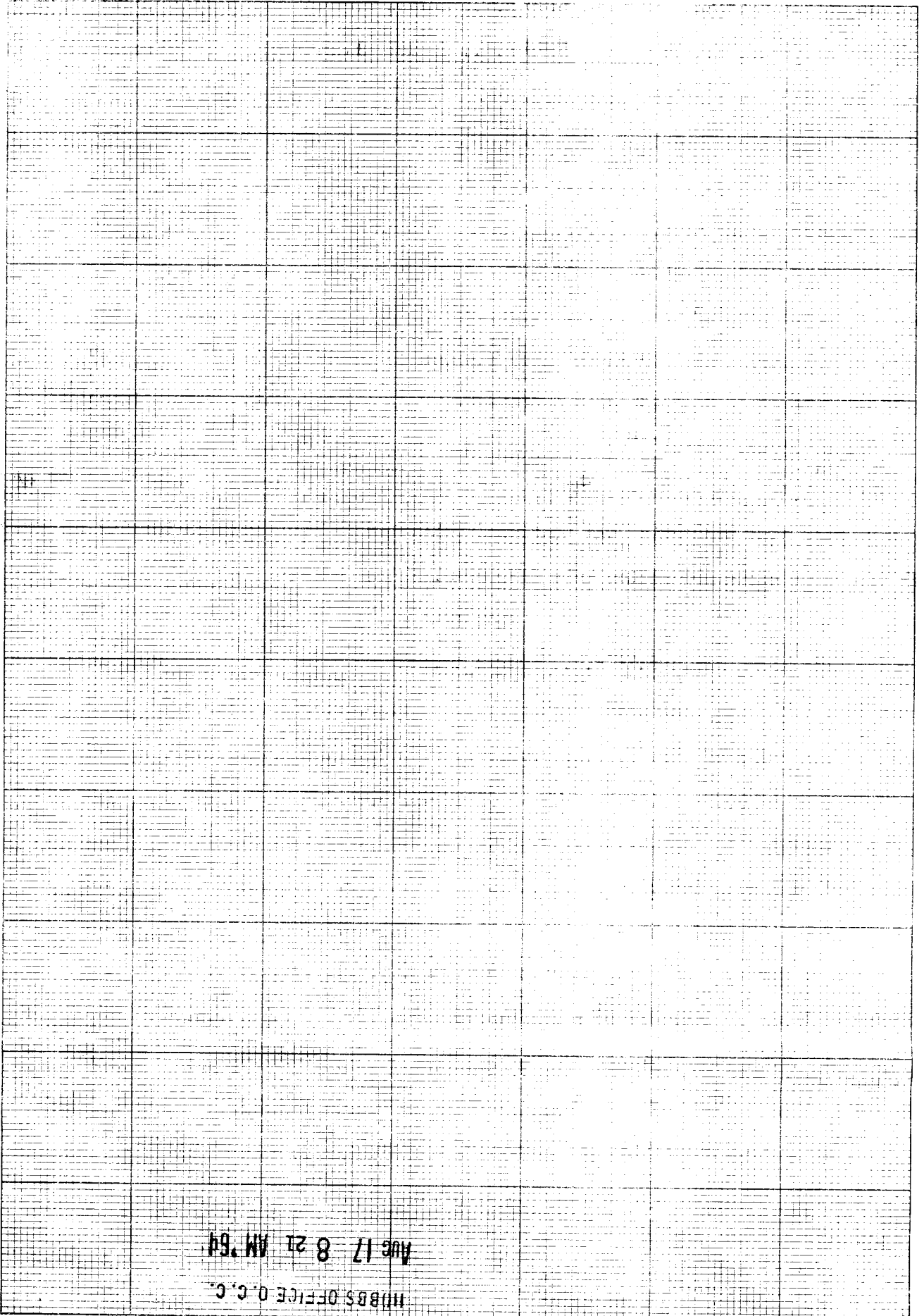
Title District engineer

Date 8/14/64

SOUTHWEST NEW MEXICO PACKER LEAKAGE TEST INSTRUCTIONS

1. A packer leakage test shall be commenced on each multiply completed well within seven days after actual completion of the well, and annually thereafter as provided by the order authorizing the multiple completion. Such tests shall be commenced on all multiple completions within seven days following completion and/or chemical or fracture treatment, and whenever remedial work has been done on a well during which the packer or the tubing have been disturbed. Tests shall also be taken at any time that communication is suspected or when requested by the Commission.
2. At least 72 hours prior to the commencement of any packer leakage test, the operator shall notify the Commission in writing of the exact time the test is to be commenced. Offset operators shall also be so notified.
3. The packer leakage test shall commence when both zones of the dual completion are shut-in for pressure stabilization. Both zones shall remain shut-in until the well-head pressure in each has stabilized and for a minimum of two hours thereafter, provided however, that they need not remain shut-in more than 24 hours.
4. For Flow Test No. 1, one zone of the dual completion shall be produced at the normal rate of production while the other zone remains shut-in. Such test shall be continued until the flowing well-head pressure has become stabilized and for a minimum of two hours thereafter, provided however, that the flow test does not continue for more than 24 hours.

5. For Flow Test No. 2, the well shall again be shut-in for pressure stabilization as provided above.
6. Flow Test No. 2 shall be conducted even though no leak was indicated during Flow Test No. 1. Flow Test No. 2 is to be the same as Flow Test No. 1, but the shut-in produced zone shall remain shut-in until the shut-in zone is produced.
7. All packer leakage tests shall be continuously measured and recorded with recording pressure gauges, the accuracy of which must be checked with a deadweight tester at least twice, once at the beginning and once at the end of each flow test.
8. The results of the above described tests shall be filed in triplicate within 10 days of the completion of the test. Tests shall be filed with the appropriate division of the New Mexico Oil Conservation Commission in triplicate on the Packer Leakage Test Form Revised 11-1-58, together with the original and one recording gauge chart with all the deadweight pressure readings when indicated thereon. In lieu of filing the original gauge chart, a copy of a pressure versus time curve may be submitted by the operator as all pressure changes shall be indicated by the gauge charts as well as all deadweight pressure readings which were taken. If the pressure curve is submitted, it shall be accompanied by a copy of the original test form filed in the operator's office. The test form shall be the Packer Leakage Test Form when the test is conducted as a gas-oil ratio test period.



**THE BRITISH-AMERICAN OIL PRODUCING COMPANY**

Box 4  
Midland, Texas  
August 11, 1964  
HOBBS OFFICE  
AUG 17 8 21 AM '64

Oil Conservation Commission  
District 1  
P. O. Box 1980  
Hobbs, New Mexico

Attention: Mr. Joe D. Ramey

Re: Packer Setting Affidavit  
British-American North Wilson Deep Unit No. 1  
Osudo (Upper and Lower Bone Springs) Pools  
Lea County, New Mexico

Gentlemen:

I, C. R. Brown, being of lawful age and having full knowledge of the facts hereinbelow set out do state:

That I am employed by The British-American Oil Producing Company in the capacity of Field Foreman, that on August 2, 1964, I personally supervised the setting of a Brown Oil Tool HS-16-1C production packer in British-American's North Wilson Deep Unit Well No. 1 located in the Osudo (Upper and Lower Bone Springs) Pools, Lea County, New Mexico at a subsurface depth of 10,066 feet, said depth measurement having been furnished me by tubing measurement; that the purpose of setting this packer was to effect a seal in the annular space between the two strings of pipe where the packer was set so as to prevent the commingling, in the bore of this well, of fluids produced from a stratum below the packer with fluids produced from a stratum above the packer; that this packer was properly set and that it did, when set, effectively and absolutely seal off the annular space between the two strings of pipe where it was set in such manner as that it prevented any movement of fluids across the packer.

Yours very truly,

THE BRITISH-AMERICAN OIL PRODUCING COMPANY

*C. R. Brown*  
C. R. Brown  
Field Foreman

CRB:JPB:1b

Before me, the undersigned authority, on this day personally appeared C. R. Brown, known to me to be the person whose name is subscribed to this instrument, who after being by me duly sworn on oath, states that he has knowledge of all the facts stated above and that the same is a true and correct statement of the facts therein recited.

Subscribed and sworn to before me on this the 12 day of August, 1964,

*C. R. Brown*  
*A. E. Gandy*  
A. E. GANDY  
Notary Public in and for  
Midland County, Texas







OPERATOR: THE BRITISH-AMERICAN OIL PRODUCING CO.

WELL: NORTH WILSON DEEP UNIT No. 1

LOCATION: UNIT 0, SECTION 31, T20S, R36E LEA COUNTY, NEW MEXICO

### Schematic of DUAL Completion 8/10/64

DEPTH, KB. 0'

