

Lease Name #1 CHILDERS (HAMON)  
 Location 1650' FSL + 1980' FWL  
 Sec. Blk. Sur.  
 Sec. 32 Twp. 19S Rge. 36E  
 County, State LEA COUNTY, NEW MEXICO

Well No. #1 RE-ENTRY Spud Date 10/17/97  
 Rig Released WELL PLUGGED 8/27/8  
 Date Completed  
 Field OSUDO Form BONE SPRING  
 Date 1st Prod.  
 Connected PL  
 Rate  
 Purchaser

WI  
 Init. Potential OIL GAS  
 BOPD, BWPD, MCFD, GOR, SITP, SIBHP, SICP

Surface Casing

13 3/8"  
 Set @ 361'  
 W/ 400 sks Class  
 Tailed in w/ sks Class

Production Casing

9 5/8"  
 Set @ 5550'  
 W/ 2700 sks Class  
 Cement Top @  
 Determined by

Prod Liner

7"  
 Top Liner @ 5269'  
 Bottom Liner @ 11,201'  
 Cemented w/ 630 sks Class INITIAL  
 Cement Top @ LINER TOP  
 Determined by CAB

Perforation Record

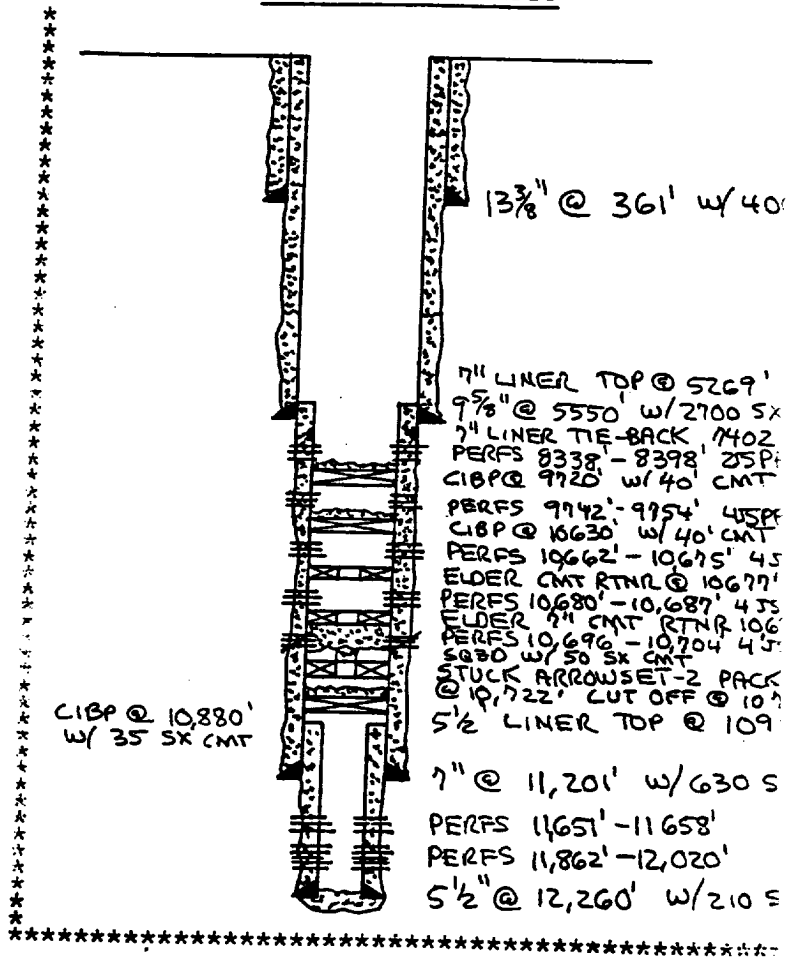
- to 11651'-11658" SPF
- to 11862'-12,020" SPF
- WOLF KAMP to 10,662'-10,675' 4 SPF
- WOLF KAMP to 10,680'-10,687' 4 SPF
- WOLF KAMP to 10,696'-10,704' 4 SPF
- 3RD BONE SPRING to 9,742'-9,754' 4 SPF
- 1ST BONE SPRING 8,338'-8,398' 2 SPF

Tubing Record

2 7/8" L-80, 6.5 #, 10,497 Ft.  
 Tubing Set @ 10,497' Ft.  
 Packer Model ARROW set @ 10,211'  
 S.N. ID set @ 10,499'

PREPARED BY BILL LEWIS  
 DATE 12/23/97

WELLBORE SCHEMATIC



ACID JOB

- 3, 4, 5 250 GALLONS 15% NEFE
- 1000 GAL MOD 202 ACID
- 500 GALLONS 15% NEFE
- 6000 GALLONS 15% NEFE W/ 470,000 SCF NZ (65% FOAM)

FRAC JOB NONE