

C CONSERVATION DIVISION

P.O. Box 2088

Santa Fe, New Mexico 87504-2088

DISTRICT I

U. Box 1980, Hobbs, NM 88240

DISTRICT II

U. Drawer DD, Artesia, NM 88210

DISTRICT III

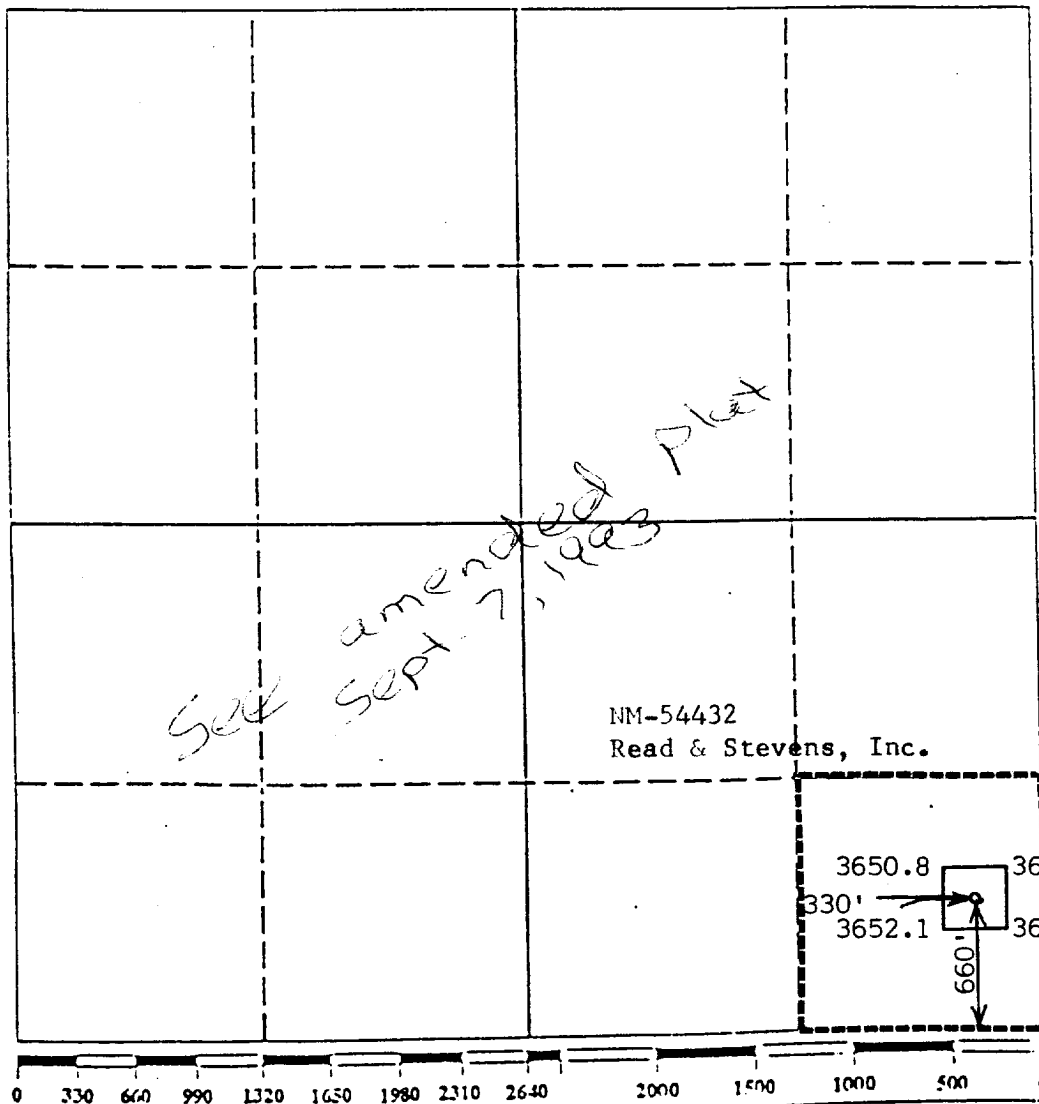
000 Rio Brazos Rd., Aztec, NM 87410

WELL LOCATION AND ACREAGE DEDICATION PLAT

All Distances must be from the outer boundaries of the section

Operator Read & Stevens, Inc.			Lease Mark Federal			Well No. 4		
Unit Letter P	Section 3	Township 20 South	Range 34 East		County Lea			
Actual Footage Location of Well: 660 feet from the South line and 330 feet from the East line								
Ground level Elev. 3653		Producing Formation Delaware		Pool Quail Ridge Delaware			Dedicated Acreage: 40 Acres	

1. Outline the acreage dedicated to the subject well by colored pencil or hatchure marks on the plat below.
 2. If more than one lease is dedicated to the well, outline each and identify the ownership thereof (both as to working interest and royalty).
 3. If more than one lease of different ownership is dedicated to the well, have the interest of all owners been consolidated by communitization, unitization, force-pooling, etc.?
 - Yes No If answer is "yes" type of consolidation _____
 If answer is "no" list the owners and tract descriptions which have actually been consolidated. (Use reverse side of this form if necessary.)
- No allowable will be assigned to the well until all interests have been consolidated (by communitization, unitization, forced-pooling, or otherwise) or until a non-standard unit, eliminating such interest, has been approved by the Division.



OPERATOR CERTIFICATION

I hereby certify that the information contained herein is true and complete to the best of my knowledge and belief.

Signature: *George R. Smith*

Printed Name: **George R. Smith**

Position: **Agent for:**

Company: **Read & Stevens, Inc.**

Date: **May 28, 1993**

SURVEYOR CERTIFICATION

I hereby certify that the well location shown on this plat was plotted from field notes of actual surveys made by me or under my supervision, and that the same is true and correct to the best of my knowledge and belief.

Date Surveyed: **May 21, 1993**

Signature & Seal of Professional Surveyor: *P.R. Patton*

Certificate No.: **8112**

