

District I
 PO Box 1980, Hobbs, NM 88241-1980
 District II
 811 S. 1st Street, Artesia, NM 88210-2834
 District III
 1000 Rio Brazos Rd., Aztec, NM 87410
 District IV
 PO Box 2088, Santa Fe, NM 87504-2088

OIL CONSERVATION DIVISION
P.O. Box 2088
Santa Fe, NM 87504-2088

AMENDED REPORT

APPLICATION FOR PERMIT TO DRILL, RE-ENTER, DEEPEN, PLUGBACK, OR ADD A ZONE

¹ Operator name and Address Chevron U.S.A. Inc. P.O. Box 1150 Midland, TX 79702		² OGRID Number 4323
⁴ Property Code 18665	³ API Number 30-0 25-33313	
⁵ Property Name Monument 14 State		⁶ Well Number 2

⁷ Surface Location

UL or lot no.	Section	Township	Range	Lot. Idn	Feet from the	North/South Line	Feet from the	East/West line	County
J	14	19-S	36-E		2227	SOUTH	2006	EAST	LEA

⁸ Proposed Bottom Hole Location If Different From Surface

UL or lot no.	Section	Township	Range	Lot. Idn	Feet from the	North/South Line	Feet from the	East/West line	County
J	14	19-S	36-E		2227	SOUTH	1881	EAST	LEA

⁹ Proposed Pool 1 MONUMENT: ABO, NORTH	¹⁰ Proposed Pool 2
--	-------------------------------

¹¹ Work Type Code N	¹² Well Type Code O	¹³ Cable/Rotary ROTARY	¹⁴ Lease Type Code S	¹⁵ Ground Level Elevation 3739'
¹⁶ Multiple NO	¹⁷ Proposed Depth 9000'	¹⁸ Formations ABO	¹⁹ Contractor UNKNOWN	²⁰ Spud Date 3/7/96

²¹ Proposed Casing and Cement Program

Hole Size	Casing Size	Casing weight/foot	Setting Depth	Sacks of Cement	Estimated TOC
14-3/4"	11-3/4"	42	1460'	500	SURFACE
11"	8-5/8"	24	4500'	1200	SURFACE
7-7/8"	5-1/2"	15.5 & 17	9000'	650	4500'

²² Describe the proposed program. If this application is to DEEPEN or PLUG BACK give the data on the present productive zone and proposed productive zone. Describe the blowout prevention program, if any. Use additional sheets if necessary.

CHEVRON PROPOSES TO:
 DRILL WITH BIT TO 1460', RUN 11-3/4" CSG. CMT WITH CLASS "C" TO SURFACE.
 NIPPLE UP BOPE & TEST. DRILL WITH BIT TO 4500', RUN 8-5/8" CSG. CMT WITH CLASS "C" TO SURFACE. DRILL WITH BIT TO 9000', RUN 5-1/2" CSG. CMT WITH CLASS "C".

MUD PROGRAM: SURFACE HOLE: 0' - 1460', FRESH WATER 8.4 PPG. INTERMEDIATE HOLE: 1460' - 4500', BRINE WATER 10.0 PPG. PRODUCTION HOLE: 4500' - 9000', FRESH WATER 8.4 PPG.
 BOPE: SEE ATTACHED CHEVRON CLASS II BOPE.
 *****PLEASE EXPEDITE*****

Permit Expires 1 Year From Approval Date Unless Drilling Underway

²³ I hereby certify that the information given above is true and complete to the best of my knowledge and belief.		OIL CONSERVATION DIVISION	
Signature: <i>J. K. Ripley</i>	Approved by: ORIGINAL SIGNED BY JERRY SEXTON		
Printed name: J. K. Ripley	Title: DISTRICT I SUPERVISOR	Approval Date: MAR 06 1996	
Title: T. A.	Expiration Date:	Conditions of Approval:	
Date: 03/4/96	Phone: (915) 687-7148	Attached <input type="checkbox"/>	

8



DISTRICT I
P.O. Box 1980, Hobbs, NM 88241-1980

State of New Mexico
Energy, Minerals and Natural Resources Department

Form C-102
Revised February 10, 1994
Submit to Appropriate District Office
State Lease - 4 Copies
Fee Lease - 3 Copies

DISTRICT II
P.O. Drawer DD, Artesia, NM 88211-0719

DISTRICT III
1000 Rio Brazos Rd., Aztec, NM 87410

OIL CONSERVATION DIVISION
P.O. Box 2088
Santa Fe, New Mexico 87504-2088

DISTRICT IV
P.O. BOX 2088, SANTA FE, N.M. 87504-2088

AMENDED REPORT

WELL LOCATION AND ACREAGE DEDICATION PLAT

API Number 30-025-33313		Pool Code 46480	Pool Name Monument; Abo, NORTH	
Property Code 13065	Property Name MONUMENT 14 STATE		Well Number 2	
OGRID No. 4323	Operator Name CHEVRON U.S.A. INC.		Elevation 3739	

Surface Location

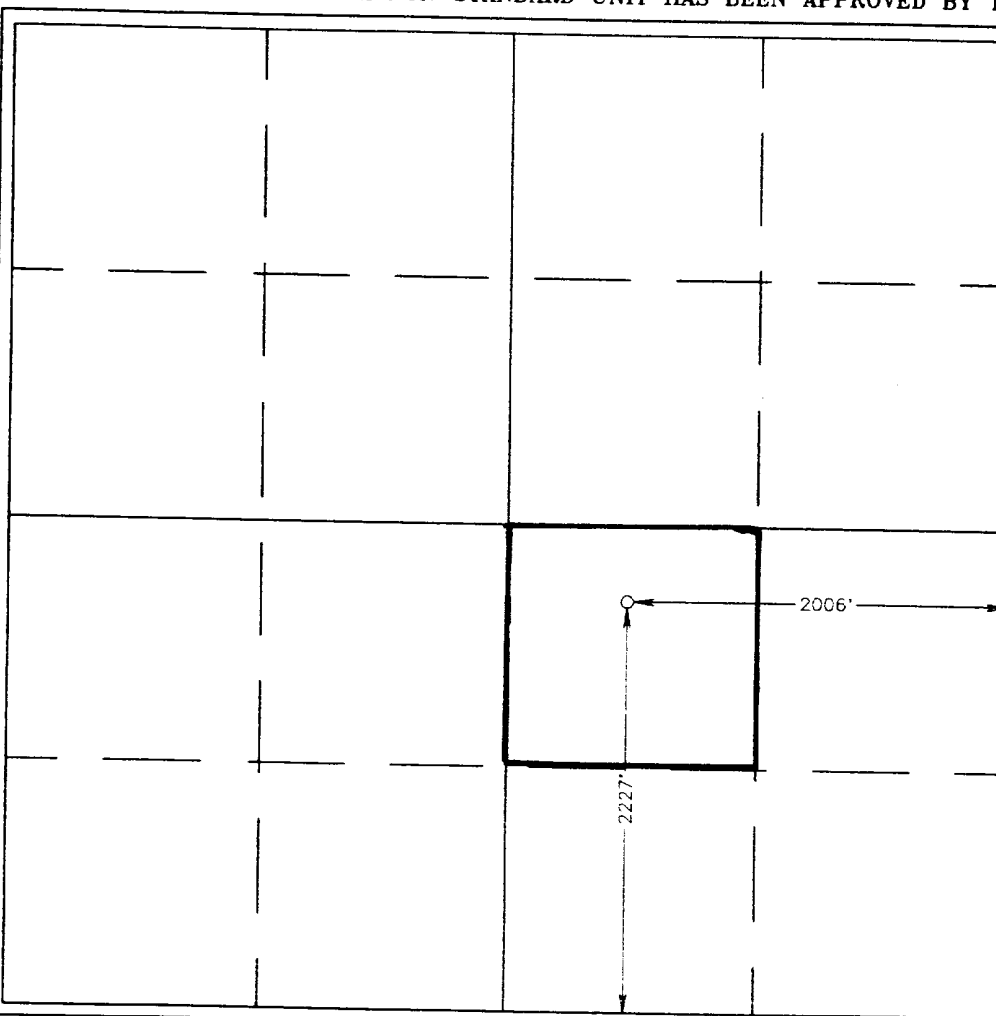
UL or lot No.	Section	Township	Range	Lot Idn	Feet from the	North/South line	Feet from the	East/West line	County
J	14	19 S	36 E		2227	SOUTH	2006	EAST	LEA

Bottom Hole Location If Different From Surface

UL or lot No.	Section	Township	Range	Lot Idn	Feet from the	North/South line	Feet from the	East/West line	County
J	14	19 S	36 E		2227	SOUTH	1881	EAST	LEA

Dedicated Acres 40	Joint or Infill	Consolidation Code	Order No.
-----------------------	-----------------	--------------------	-----------

NO ALLOWABLE WILL BE ASSIGNED TO THIS COMPLETION UNTIL ALL INTERESTS HAVE BEEN CONSOLIDATED OR A NON-STANDARD UNIT HAS BEEN APPROVED BY THE DIVISION



OPERATOR CERTIFICATION

I hereby certify that the information contained herein is true and complete to the best of my knowledge and belief.

J. K. Ripley
Signature
J. K. Ripley
Printed Name
T.A.
Title
3/4/96
Date

SURVEYOR CERTIFICATION

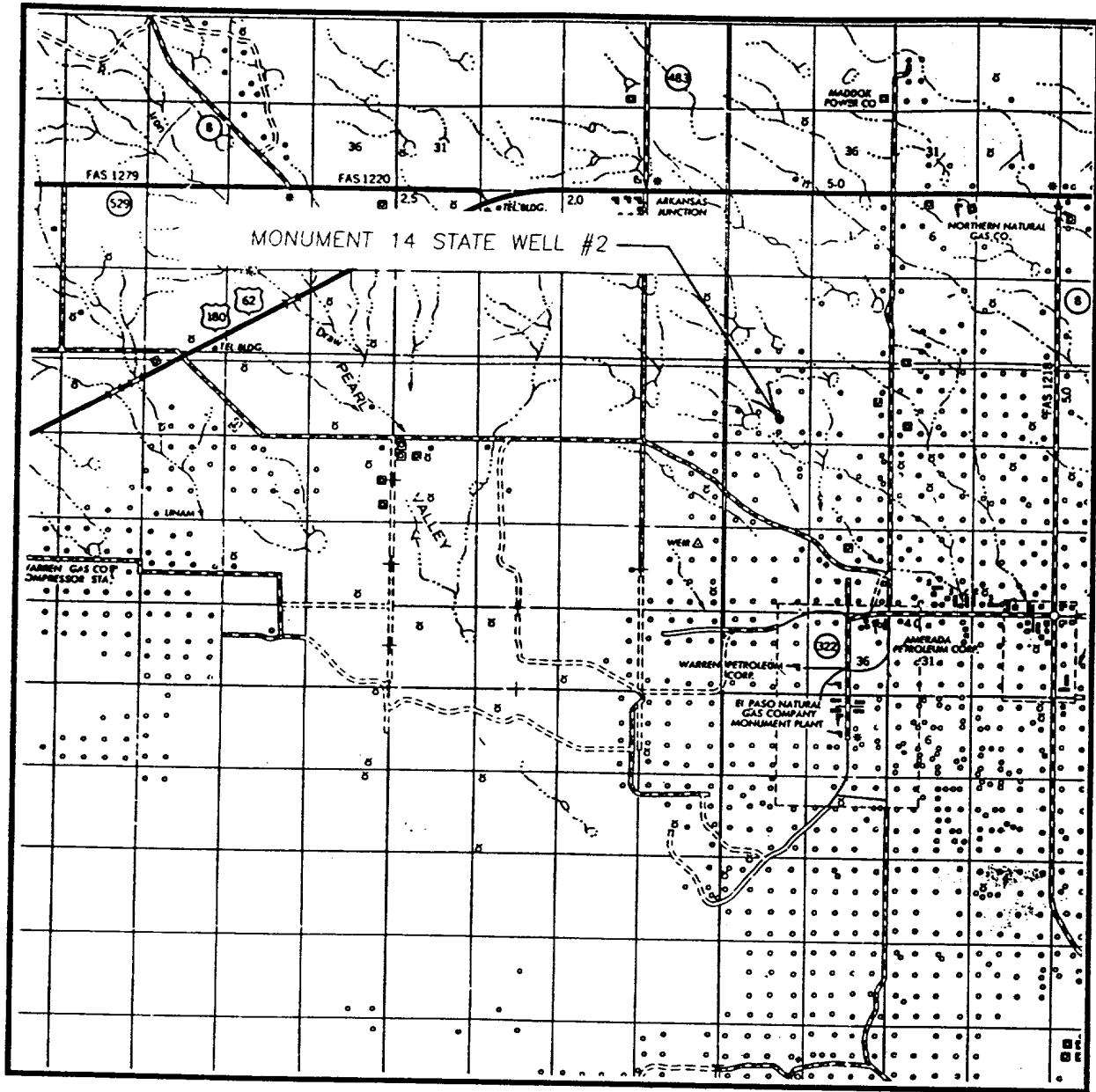
I hereby certify that the well location shown on this plat was plotted from field notes of actual surveys made by me or under my supervision and that the same is true and correct to the best of my belief.

FEBRUARY 28, 1996

Date Surveyed SJA
Signature & Seal of Professional Surveyor
Gary Eidson 2-29-96
W.O. Num. 96-11-0295

Certificate No. JOHN W. WEST 676
RONALD J. EIDSON 3239
GARY EIDSON 12641

VICINITY MA



SCALE: 1" = 2 MILES

SEC. 14 TWP. 19-S RGE. 36-E

SURVEY N.M.P.M.

COUNTY LEA

DESCRIPTION 2227' FSL & 2006' FEL

ELEVATION 3739

OPERATOR CHEVRON U.S.A. INC.

LEASE MONUMENT 14 STATE

JOHN WEST ENGINEERING
HOBBS, NEW MEXICO
(505) 393-3117

Handwritten signature and date: 2/3/14/16

