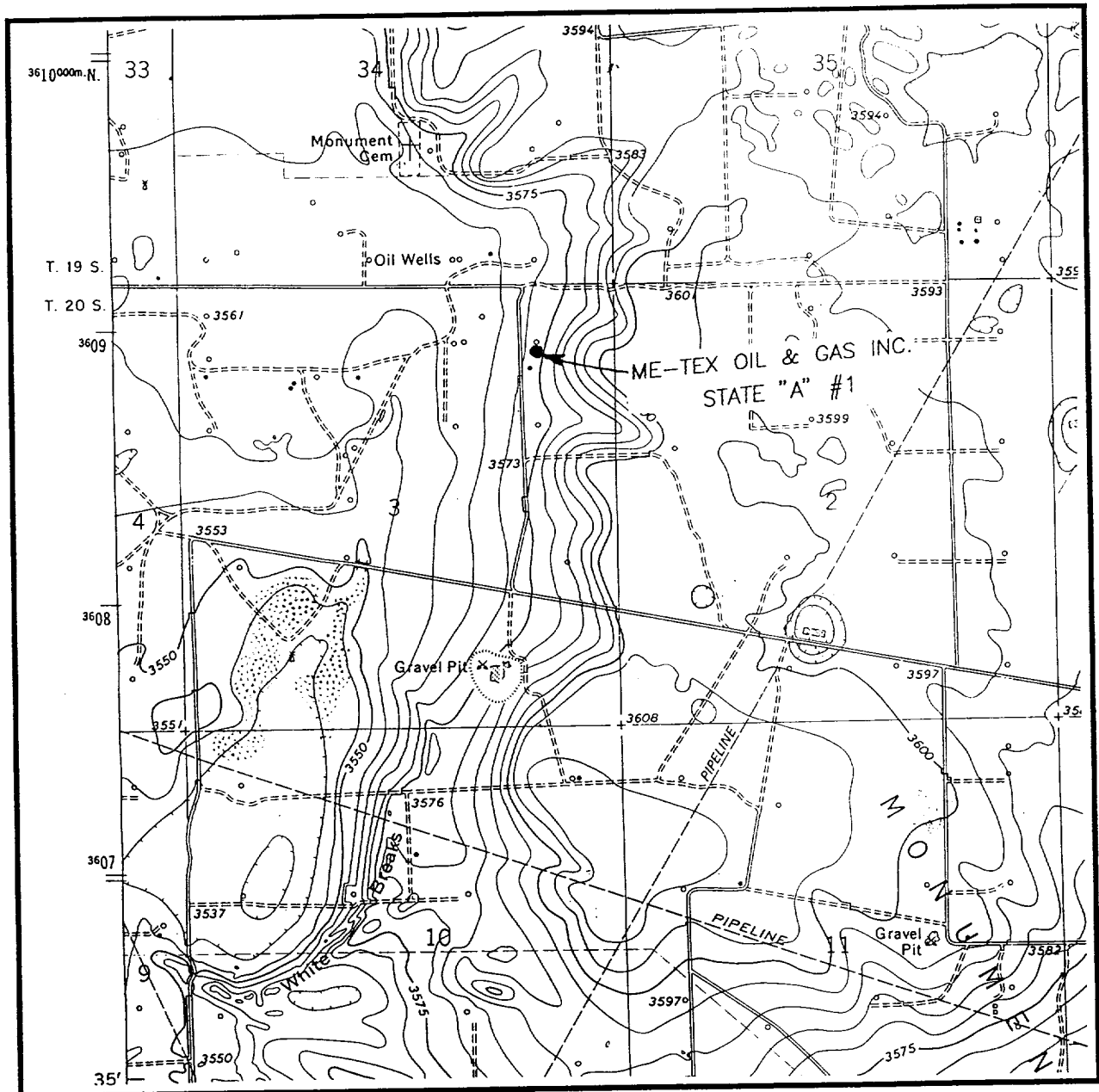


# LOCATION VERIFICATION MAP



SCALE: 1" = 2000'

CONTOUR INTERVAL - 5'

SEC. 3 TWP. 20-S RGE. 37-E

SURVEY N.M.P.M.

COUNTY LEA

DESCRIPTION 800' FNL & 990' FEL

ELEVATION 3571'

OPERATOR ME-TEX OIL & GAS INC.

LEASE STATE "A"

U.S.G.S. TOPOGRAPHIC MAP

HOBBS SW, N.M.

**JOHN WEST ENGINEERING  
HOBBS, NEW MEXICO**

**(505) 393-3117**

6/24/07

ELF