

Submit to Appropriate  
District Office  
State Lease - 4 copies  
Fee Lease - 3 copies

State of New Mexico  
Energy, Minerals and Natural Resources Department

Form C-102  
Revised 1-1-89

**OIL CONSERVATION DIVISION**

P.O. Box 2088  
Santa Fe, New Mexico 87504-2088

**DISTRICT I**  
P.O. Box 1980, Hobbs, NM 88240

**DISTRICT II**  
P.O. Drawer DD, Artesia, NM 88210

**DISTRICT III**  
1000 Rio Brazos Rd., Aztec, NM 87410

**WELL LOCATION AND ACREAGE DEDICATION PLAT**

All Distances must be from the outer boundaries of the section

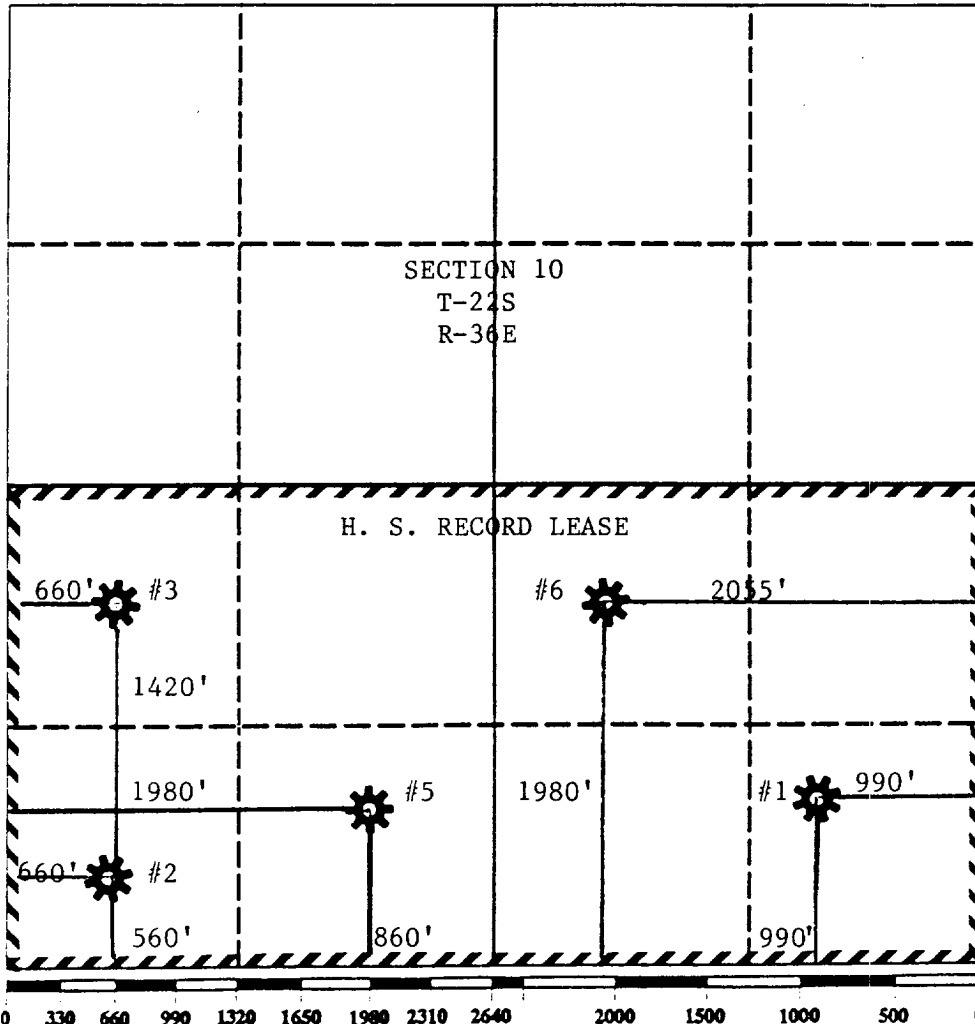
Operator ARCO OIL AND GAS COMPANY			Lease H. S. RECORD WN		Well No. #2
Unit Letter M	Section 10	Township T-22S	Range R-36E	County NMPM LEA	
Actual Footage Location of Well: 560' feet from the SOUTH line and 660' feet from the WEST line					
Ground level Elev. 3553'	Producing Formation TANSILL/YATES/7-RIVERS		Pool JALMAT GAS	Dedicated Acreage: 320 Acres	

- Outline the acreage dedicated to the subject well by colored pencil or hachure marks on the plat below.
- If more than one lease is dedicated to the well, outline each and identify the ownership thereof (both as to working interest and royalty).
- If more than one lease of different ownership is dedicated to the well, have the interest of all owners been consolidated by communitization, unitization, force-pooling, etc.?
 

Yes     No    If answer is "yes" type of consolidation \_\_\_\_\_

If answer is "no" list the owners and tract descriptions which have actually been consolidated. (Use reverse side of this form if necessary.)

No allowable will be assigned to the well until all interests have been consolidated (by communitization, unitization, forced-pooling, or otherwise) or until a non-standard unit, eliminating such interest, has been approved by the Division.



**OPERATOR CERTIFICATION**

I hereby certify that the information contained herein is true and complete to the best of my knowledge and belief.

Signature \_\_\_\_\_

Printed Name  
E. E. GILSON

Position  
ENGINEERING TECHNICIAN

Company  
ARCO OIL AND GAS COMPANY

Date  
JUNE 1, 1993

**SURVEYOR CERTIFICATION**

I hereby certify that the well location shown on this plat was plotted from field notes of actual surveys made by me or under my supervision, and that the same is true and correct to the best of my knowledge and belief.

Date Surveyed \_\_\_\_\_

Signature & Seal of Professional Surveyor \_\_\_\_\_

Certificate No. \_\_\_\_\_