

NEW MEXICO OIL CONSERVATION COMMISSION
WELL LOCATION AND ACREAGE DEDICATION PL

Form C-102
Supersedes C-128
Effective 1-1-65

All distances must be from the outer boundaries of the Section.

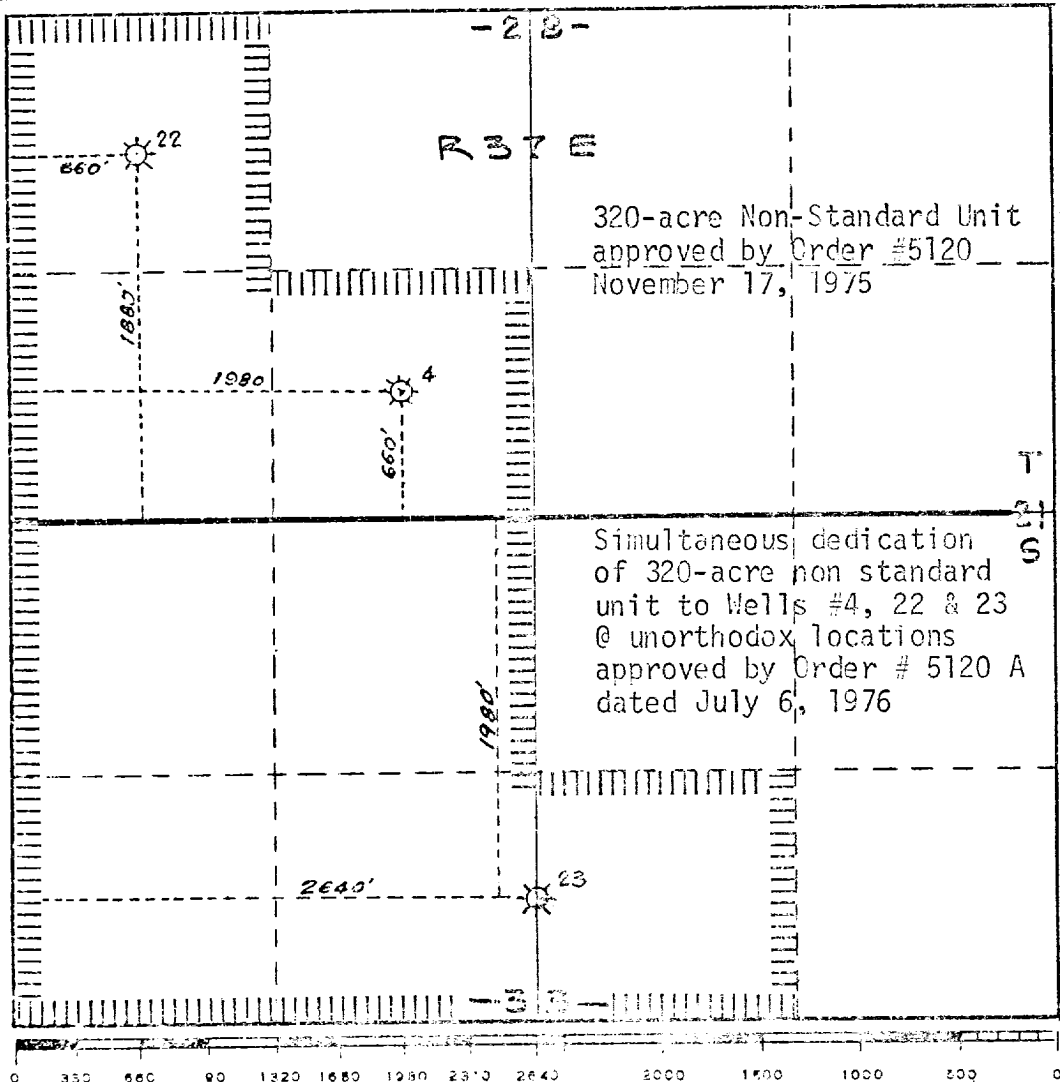
Operator Mobil Oil Corporation		Lease E. O. Carson		Well No. 23
Unit Letter -	Section 33	Township 21S	Range 37E	County Lea
Actual Footage Location of Well: 2640 feet from the west line and 1980 feet from the north line				
Ground Level Elev.	Producing Formation Queen	Pool Eumont Gas Pool	Dedicated Acreage: 320 (3 wells) Acres	

1. Outline the acreage dedicated to the subject well by colored pencil or hachure marks on the plat below.
2. If more than one lease is dedicated to the well, outline each and identify the ownership thereof (both as to working interest and royalty).
3. If more than one lease of different ownership is dedicated to the well, have the interests of all owners been consolidated by communitization, unitization, force-pooling, etc?

Yes No If answer is "yes," type of consolidation _____

If answer is "no," list the owners and tract descriptions which have actually been consolidated. (Use reverse side of this form if necessary.) _____

No allowable will be assigned to the well until all interests have been consolidated (by communitization, unitization, forced-pooling, or otherwise) or until a non-standard unit, eliminating such interests, has been approved by the Commission.



320-acre Non-Standard Unit
approved by Order #5120
November 17, 1975

Simultaneous dedication
of 320-acre non standard
unit to Wells #4, 22 & 23
@ unorthodox locations
approved by Order # 5120 A
dated July 6, 1976

CERTIFICATION

I hereby certify that the information contained herein is true and complete to the best of my knowledge and belief.

A. D. Bond

Name A. D. Bond
Position Proration Staff Assistant
Company Mobil Oil Corporation
Date July 9, 1976
I hereby certify that the well location shown on this plat was plotted from field notes of actual surveys made by me or under my supervision, and that the same is true and correct to the best of my knowledge and belief.
Date Surveyed
Registered Professional Engineer and/or Land Surveyor
Certificate No.

RECEIVED

JUL 13 1976

U.S. COMMISSION ON CONSUMER
POLICY