

NEW MEXICO OIL CONSERVATION COMMISSION
 WELL LOCATION AND ACREAGE DEDICATION PLAT

Form C-102
 Supersedes C-128
 Effective 1-1-65

All distances must be from the outer boundaries of the Section.

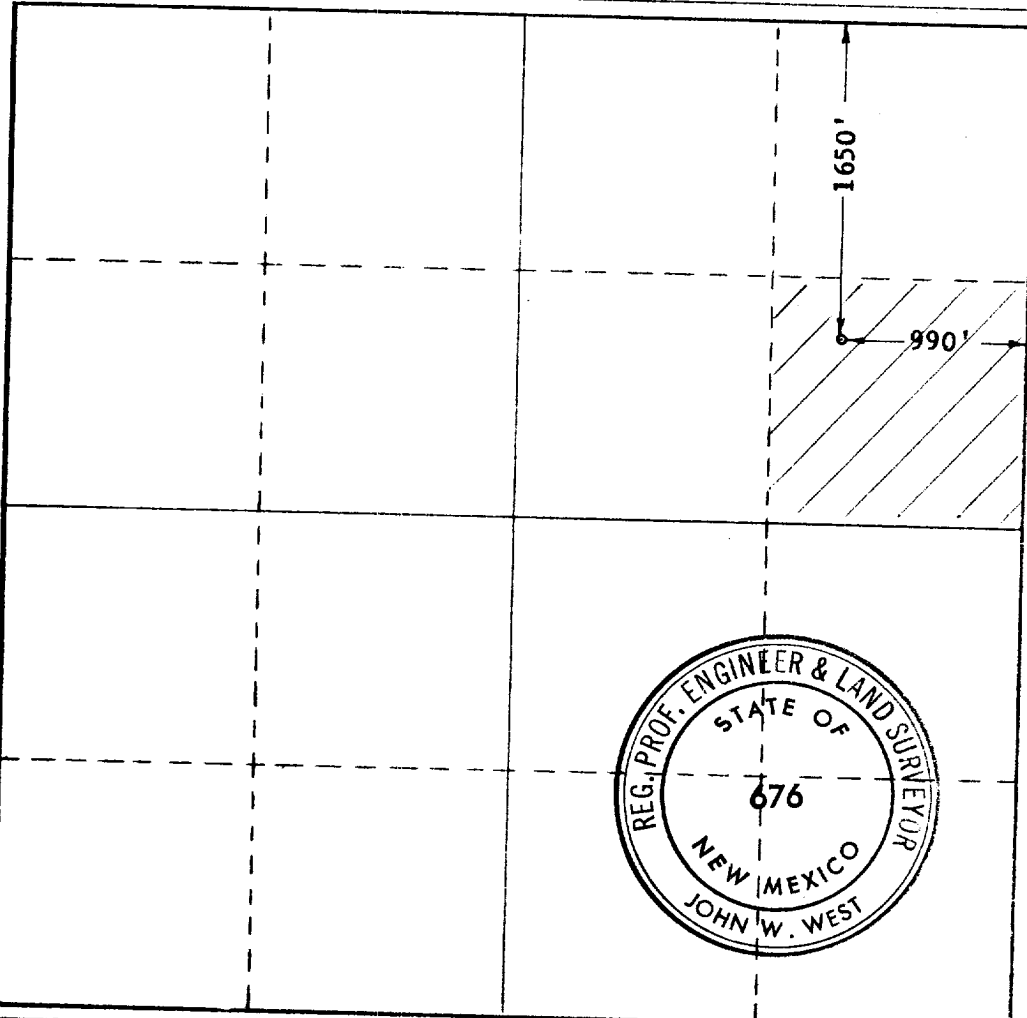
HUBBS OFFICE O. D. G.
 DEC 30 11 40 AM '65

Operator HARPER OIL Co.		Lease S. J. SARKEYS		Well No. 2
Unit Letter H	Section 26	Township 21 SOUTH	Range 37 EAST	County LEA
Actual Footage Location of Well: 1650 feet from the NORTH line and 990 feet from the EAST line				
Ground Level Elev. 3377.9	Producing Formation	Pool Wantz Abo	Dedicated Acreage: 40 Acres	

1. Outline the acreage dedicated to the subject well by colored pencil or hachure marks on the plat below.
2. If more than one lease is dedicated to the well, outline each and identify the ownership thereof (both as to working interest and royalty).
3. If more than one lease of different ownership is dedicated to the well, have the interests of all owners been consolidated by communitization, unitization, force-pooling, etc?
 Only one base lease involved.
 Yes No If answer is "yes," type of consolidation _____

If answer is "no," list the owners and tract descriptions which have actually been consolidated. (Use reverse side of this form if necessary.) _____

No allowable will be assigned to the well until all interests have been consolidated (by communitization, unitization, forced-pooling, or otherwise) or until a non-standard unit, eliminating such interests, has been approved by the Commission.



CERTIFICATION:

I hereby certify that the information contained herein is true and complete to the best of my knowledge and belief.

Marshall L. Bailey

Name
Marshall L. Bailey
 Position
 Petroleum Engineer

Company
 Harper Oil Company

Date
 December 27, 1965

I hereby certify that the well location shown on this plat was plotted from field notes of actual surveys made by me or under my supervision, and that the same is true and correct to the best of my knowledge and belief.

Date Surveyed
 12-23-65

Registered Professional Engineer and/or Land Surveyor

John W. West
 Certificate No.

N. M. P. E. & L. S. No. 676

