

WELL COMPLETION SKETCHES

LOCATION

Sec 9-225-36E
890'FNL + 990'FEL

WELL

Account # 60

FIELD

South Eirice

DATE

3-25-93

PRESENT COMPLETION

SUGESSTED COMPLETION For P+A

PERMANENT WELL BORE DATA

WELL HISTORY

8 5/8" 28# @ 1515' cmt w/ 500sx

Tops: Tansill - 2974

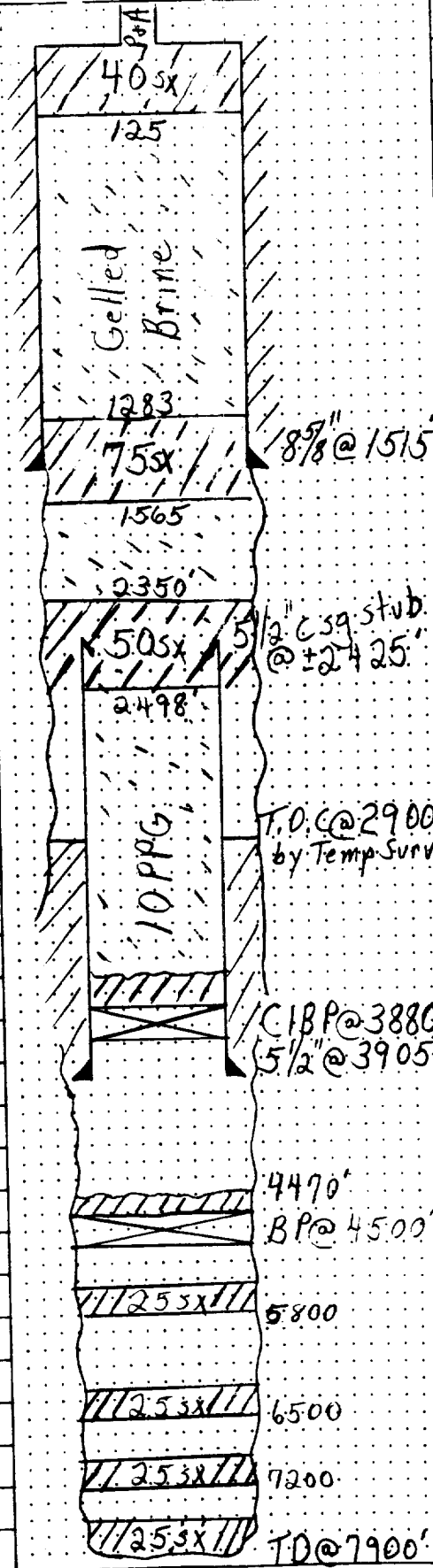
Yates - 3161

Seven Rivers - 3363

Queen - 3720

Grayburg - 3898

5 1/2" 14# @ 3905' cmt w/



9/66 - \emptyset to 7900'
* Dry Hole *

Set 25sx plugs @ 37900, 7200, 6500, 5300, 4400, 3800, 3130, 1530 + 500' @

5/77 - Re-enter well
D... 115 - 12,000'
Set BP @ ... w/ 5sx
Ran 5 1/2" csg + cemented
 \emptyset out to 4470
Acid w/ 4000g
Completed as W.S.W.

9/84 - Acid w/ 4000g 15%
9/92 - Pull sub-pump
Set CIBP @ 3880'
+ Dump 35' cmt

Proposed P+A Procedure:
1) Circulate Hole w/ 10" gel B.
2) Run Freepoint on 5 1/2" csg
Cut + Pull 5 1/2" csg
3) Spot 40sx Plug @ 415-152
4) Spot 25sx Plug @ 3'-103
5) Cut 8 5/8" csg 3' below
and Set P+A Marker

* * * * *

3/93 - P+A as Proposed
↓ as shown

T.O. @ 2900'
by Temp. Surv.

CIBP @ 3880'
5 1/2" @ 3905'

4470'
BP @ 4500'

5800

6500

7200

T.O. @ 7900'