

NEW MEXICO OIL CONSERVATION COMMISSION

Form C-101
Revised 1-1-65

NO. OF COPIES RECEIVED	
DISTRIBUTION	
SANTA FE	
FILE	
U.S.G.S.	
LAND OFFICE	
OPERATOR	

5A. Indicate Type of Lease	
STATE <input type="checkbox"/>	FEE <input checked="" type="checkbox"/>

5. State Oil & Gas Lease No.

APPLICATION FOR PERMIT TO DRILL, DEEPEN, OR PLUG BACK

1a. Type of Work		7. Unit Agreement Name	

b. Type of Well OIL WELL <input checked="" type="checkbox"/> GAS WELL <input type="checkbox"/> OTHER <input type="checkbox"/>		8. Farm or Lease Name	
DEEPEN <input type="checkbox"/> PLUG BACK <input type="checkbox"/>		F.F. Hardison "B"	
SINGLE ZONE <input type="checkbox"/> MULTIPLE ZONE <input checked="" type="checkbox"/>		9. Well No.	
2. Name of Operator		10	
EXXON CORPORATION		10. Field Wantz ABO, Wantz Granite Wash and Drinkard	
3. Address of Operator			
P. O. BOX 1600, MIDLAND, TEXAS 79702			
4. Location of Well		12. County	
UNIT LETTER A LOCATED 450 FEET FROM THE East LINE		Lea	
AND 990 FEET FROM THE North LINE OF SEC. 34 TWP. 21S RGE. 37E NMPM			
		19. Proposed Depth	
		7700'	
		19A. Formation ABO, Granite Wash & Drinkard	
		20. Rotary or C.T.	
		Rotary	
21. Elevations (Show whether DF, RT, etc.)		22. Approx. Date Work will start	
To be filed later		May 19, 1978	
21A. Kind & Status Plug. Bond			
Blanket on file			
21B. Drilling Contractor			
Unknown			

23.

PROPOSED CASING AND CEMENT PROGRAM

SIZE OF HOLE	SIZE OF CASING	WEIGHT PER FOOT	SETTING DEPTH	SACKS OF CEMENT	EST. TOP
12-1/4 or 13-3/4	9-5/8	3.6	1200'	700	Surface
8-3/4	7	23 & 26	7600'	1940	1174

Howco method of cementing to be used. A diagrammatic sketch of BOP equipment is attached.

Mud Program:

0-1200'	8.3-9.0#	Fresh Water Spud Mud
1200-6000'	10#	Brine Water
6000-7600'	10.0-10.2#	Brine Water Mud

IN ABOVE SPACE DESCRIBE PROPOSED PROGRAM: IF PROPOSAL IS TO DEEPEN OR PLUG BACK, GIVE DATA ON PRESENT PRODUCTIVE ZONE AND PROPOSED NEW PRODUCTIVE ZONE. GIVE BLOWOUT PREVENTER PROGRAM, IF ANY.

I hereby certify that the information above is true and complete to the best of my knowledge and belief.

Signed Melba Kneip Title Proration Specialist Date May 9, 1978

(This space for State Use)

APPROVED BY [Signature] TITLE SUPERVISOR DISTRICT 1 DATE MAY 11 1978

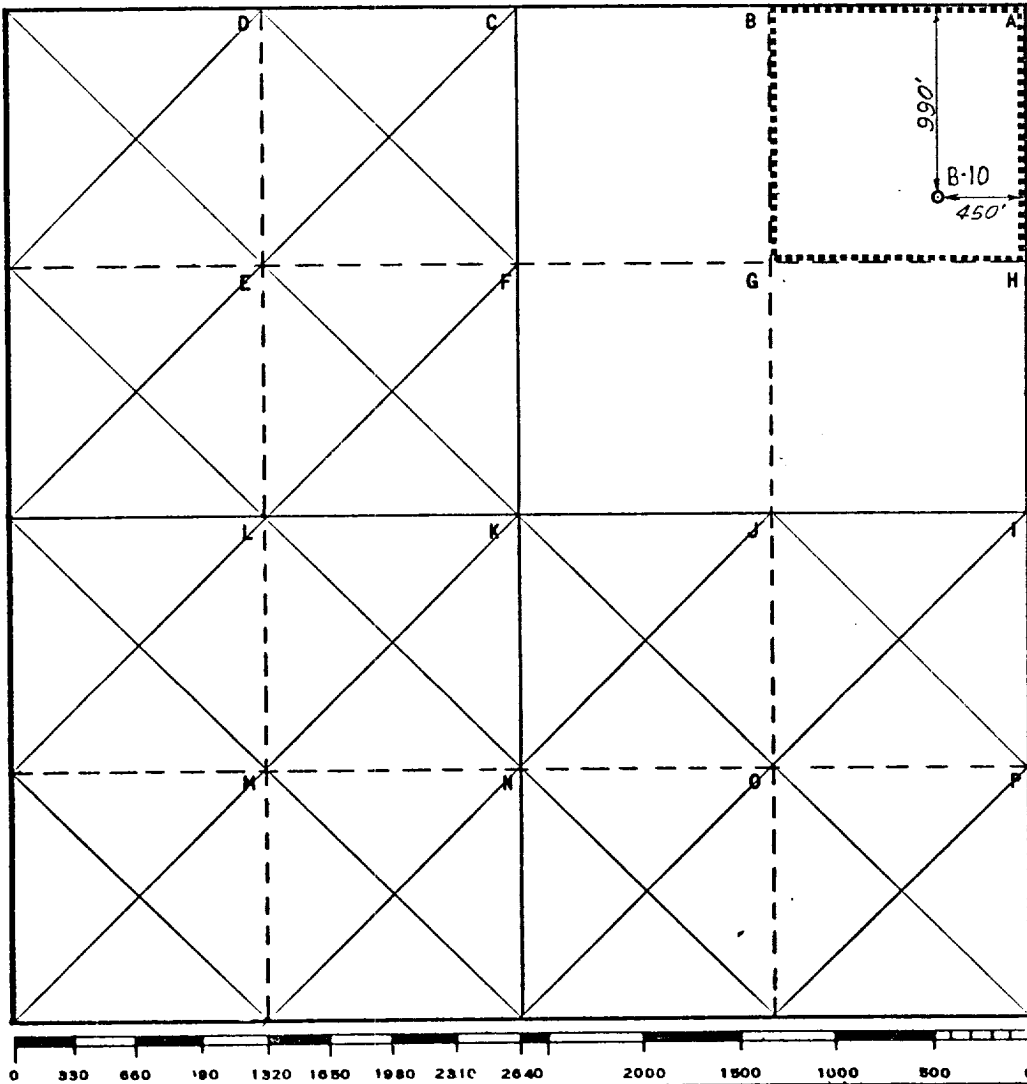
CONDITIONS OF APPROVAL, IF ANY:

Operator Exxon Corporation		Lease F. F. Hardison "B"		Well No. 10
Unit Letter A	Section 34	Township 21 South	Range 37 East	County Lea
Actual Footage Location of Well: 990 feet from the North line and 450 feet from the East line				
Ground Level Elev.:	Producing Formation Abo, Granite Wash & Drinkard	Pool Wantz Abo, Wantz Granite Wash & Drinkard	Dedicated Acreage: 40 Acres	

1. Outline the acreage dedicated to the subject well by colored pencil or hachure marks on the plat below.
2. If more than one lease is dedicated to the well, outline each and identify the ownership thereof (both as to working interest and royalty).
3. If more than one lease of different ownership is dedicated to the well, have the interests of all owners been consolidated by communitization, unitization, force-pooling, etc?
- ☐ Yes ☐ No If answer is "yes," type of consolidation _____

If answer is "no," list the owners and tract descriptions which have actually been consolidated. (Use reverse side of this form if necessary.) _____

No allowable will be assigned to the well until all interests have been consolidated (by communitization, unitization, forced-pooling, or otherwise) or until a non-standard unit, eliminating such interests, has been approved by the Commission.



CERTIFICATION

I hereby certify that the information contained herein is true and complete to the best of my knowledge and belief.

Name
Melba Knippling

Position
Proration Specialist

Company
Exxon Corporation
Box 1600 Midland, Texas

Date
May 8, 1978

I hereby certify that the well location shown on this plat was plotted from field notes of actual surveys made by me or under my supervision, and that the same is true and correct to the best of my knowledge and belief.

Date Surveyed
5-2-78

Registered Professional Engineer and/or Land Surveyor
W. S. Westerfield

Certificate No.
1582

WOUT PREVENTER SPECIFICATION
EQUIPMENT DESCRIPTION

TYPE II-C

All equipment should be at least 2000 psi WP or higher unless otherwise specified.

1. Bell nipple.
2. Hydril or Shaffer bag type preventer.
3. Ram type pressure operated blowout preventer with blind rams.
4. Flanged spool with one 4-inch and one 2-inch (minimum) outlet.
5. 2-inch (minimum) flanged plug or gate valve.
6. 2-inch by 2-inch by 2-inch (minimum) flanged tee.
- ~~7. 4-inch pressure operated gate valve.~~
8. 4-inch flanged gate or plug valve.
9. Ram type pressure operated blowout preventer with pipe rams.
10. Flanged type casing head with one side outlet (furnished by Exxon).
11. 2-inch threaded (or flanged) plug or gate valve (furnished by Exxon).
Flanged on 5000# WP, threaded on 3000# WP or less.
12. Needle valve (furnished by Exxon).
13. 2-inch nipple (furnished by Exxon).
14. Tapped bull plug (furnished by Exxon).
15. 4-inch flanged spacer spool.
16. 4-inch by 2-inch by 2-inch by 2-inch flanged cross.
17. 2-inch flanged plug or gate valve.
18. 2-inch flanged adjustable choke.
19. 2-inch threaded flange.
20. 2-inch XXH nipple.
21. 2-inch forged steel 90° Ell.
22. Cameron (or equal.) threaded pressure gage.
23. Threaded flange.

35. 2-inch flanged tee.
36. 3-inch (minimum) hose. (Furnished by Exxon).
37. Trip tank. (Furnished by Exxon).
38. 2-inch flanged plug or gate valve.
39. 2-1/2-inch pipe, 300' to pit, anchored.
40. 2-1/2-inch SE valve.
41. 2-1/2-inch line to steel pit or separator.

NOTES:

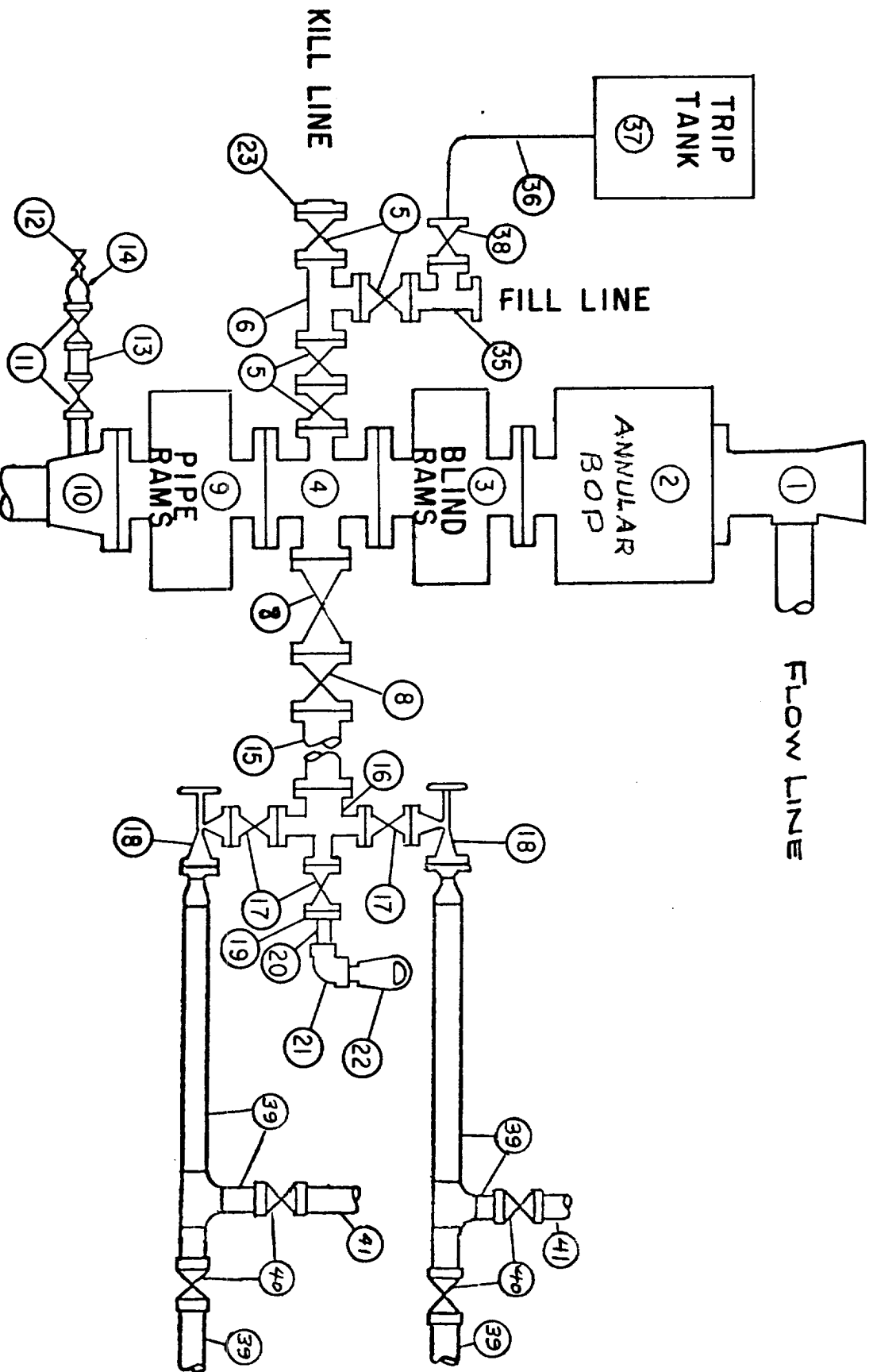
1. Items 3, 4 and 9 may be replaced with double ram type preventer with side outlets between the rams.
2. The two valves next to the stack on the fill and kill line to be closed unless drill string is being pulled.
3. Kill line is for emergency use only. This connection shall not be used for filling.
4. Replacement pipe rams and blind rams shall be on location at all times.
5. Only type U, LWS and QRC ram type preventers with secondary seals are acceptable for 5000 psi WP and higher BOP stacks.
6. Type E ram-type BOP's with factory modified side outlets may be used on 3000 psi or lower WP BOP stacks.

RECEIVED

101013

OIL CONSERVATION COMMA
FEB 4 1961

MIDLAND DRILLING ORGANIZATION BLOWOUT PREVENTER SPECIFICATION TYPE II - C



RECEIVED

FEB 10 1978

OIL CONSERVATION COMM.
EUBBS W. W.

173

173

173