

All distances must be from the outer boundaries of the Section.

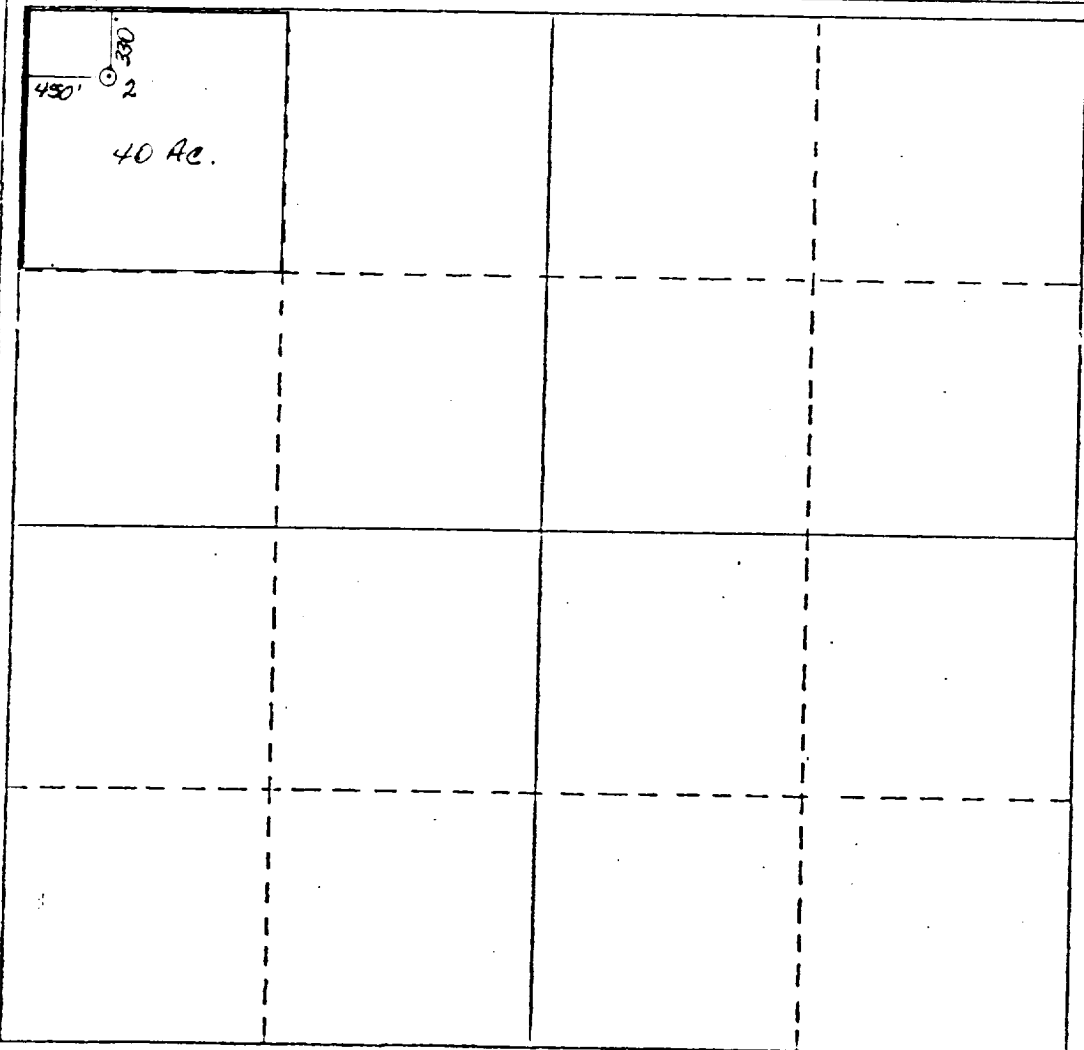
Operator Mobil Producing TX & NM Inc.			Lease General G State			Well No. 2
Unit Letter D	Section 16	Township 20-S	Range 37-E	County Lea		
Actual Postage Location of Well: 330 feet from the north line and 450 feet from the west line						
Ground Level Elev. 3527'	Producing Formation Queen		Pool Eumont Gas Pool		Dedicated Acreage: 40 Acres	

1. Outline the acreage dedicated to the subject well by colored pencil or hachure marks on the plat below.
2. If more than one lease is dedicated to the well, outline each and identify the ownership thereof (both as to working interest and royalty).
3. If more than one lease of different ownership is dedicated to the well, have the interests of all owners been consolidated by communitization, unitization, force-pooling, etc?

Yes No If answer is "yes," type of consolidation _____

If answer is "no," list the owners and tract descriptions which have actually been consolidated. (Use reverse side of this form if necessary.) _____

No allowable will be assigned to the well until all interests have been consolidated (by communitization, unitization, forced-pooling, or otherwise) or until a non-standard unit, eliminating such interests, has been approved by the Division.



CERTIFICATION

I hereby certify that the information contained herein is true and complete to the best of my knowledge and belief.

G. E. Tate

Name _____

G. E. Tate

Position _____

Env. & Reg. Manager

Company _____

Mobil Producing TX & NM Inc.

Date _____

July 17, 1985

I hereby certify that the well location shown on this plat was plotted from field notes of actual surveys made by me or under my supervision, and that the same is true and correct to the best of my knowledge and belief.

Date Surveyed _____

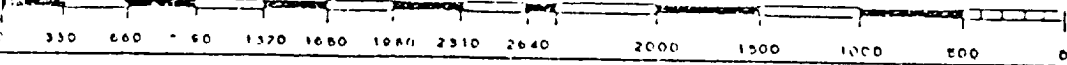
7/13/84

Registered Professional Engineer and/or Land Surveyor

H. A. Carson, Jr.

Certificate No. _____

5063



RECEIVED

JUL 24 1985

U.S. HOUSE OF REPRESENTATIVES

COUNTY LEA FIELD Eumont STATE NM
 OPR MOBIL PRODUCING TX & NM API 30-025-28818
 NO 2 LEASE General "G" State MAP
 Sec 16, T20S, R37E CO-ORD
 330 FNL, 450 FWL of Sec 5-1-15 NM
 3 mi S/Monument SPD 9-19-84 CMP 3-6-85

CSC	WELL CLASS: INIT D FIN DG LSE. CODE			
	FORMATION	DATUM	FORMATION	DATUM
8 5/8-360-300 sx				
5 1/2-5805-1700 sx				
2 3/8-3180				
	TD 5805 (BLBR)		PBD 5800	

IP (Queen) Perfs 3297-3446 F 79 MCFGPD. Pot based on 24 hr test thru 1 chk. GOR 79,000; gty (NR); CP Pkr; TP 75

P.L.C.:

CONTR Rod Rick #2 OPRSELEV 3527 GR SUBS 10

F.R. 7-30-84
 PD 6000 RT (Queen)
 9-25-84 Drlg 4137
 Drlg break 3846-3866
 10-2-84 Drlg 4816
 10-9-84 Drlg 5300
 10-16-84 TD 5805; MORT
 No Cores or DST's
 10-19-84 TD 5805; WOCT
 11-9-84 TD 5805; PBD 5800; Plg Tbg
 11-19-84 TD 5805; PBD 5800; Tstg
 Perf (Blinebry) 5732-5739, 5742-5748, 5753-5761 w/1 SPF
 Acid (5732-5761) 2400 gals (15% HCL)
 Frac (5732-5761) 4000 gals + 222,000 SCF N2
 Swbd 1 BO + 69 BLW in 9 hrs (5732-5761)
 5-1-15 NM

LEA
MOBIL PRODUCING
TX & NM

Eumont
2 General "G" State
Sec 16, T20S, R37E

NM
Page #2

11-19-84 Continued
Frac (5732-5761) 30,000 gals + 54,000# sd
11-26-84 TD 5805; PBD 5800; TOP
Ppd 815 BLW + 14 BSW in 96 hrs (5732-5761)
12-3-84 TD 5805; PBD 5800; TOP
Ppd 210 BSW in 72 hrs (5732-5761)
12-7-84 TD 5805; PBD 5800; SI
Ppd 54 BSW in 24 hrs (5732-5761)
1-9-85 TD 5805; PBD 5800; SI
Cmt Ret @ 5707
Sqzd (5753-5761) 50 sx & DOC
Perf ((Paddock) 5078-5082, 5106-5111, 5119-
5123, 5152-5156, 5174-5181, 5194-5202, 5219-
5222, 5224-5227 w/1 SPF 5-1-15 NM

1-9-85 Continued
Acid (5078-5227) 4600 gals (15%)
Ppd 535 BSW in 48 hrs (5078-5227)
4-29-85 TD 5805; PBD 5800; Complete
Sqzd (5078-5227) 100 sx & DOC
Perf (Queen) 3297-3305, 3312-3320, 3344-3345,
3372-3376, 3386-3388, 3392-3394, 3406-3406.
3410-3412, 3417-3419, 3425-3425, 3428-3430,
3433-3436, 3444-3446 w/1 SPF
Acid (3297-3446) 4600 gals (15% DINE FE HCL)
LOG TOPS: Golrieta 4984, Blinebry 5264
LOGS RUN: CNDL, DLL, BHC, ACSL, GRL, PDC
Rig Released 10-13-84
5-4-85 COMPLETION ISSUED 5-1-15 NM
IC 30-025-70369-84