

Submit to Appropriate
District Office
State Lease - 4 copies
Fee Lease - 3 copies

State of New Mexico
Energy, Minerals and Natural Resources Department

Form C-102
Revised 1-1-89

OIL CONSERVATION DIVISION
P.O. Box 2088
Santa Fe, New Mexico 87504-2088

DISTRICT I
P.O. Box 1980, Hobbs, NM 88240

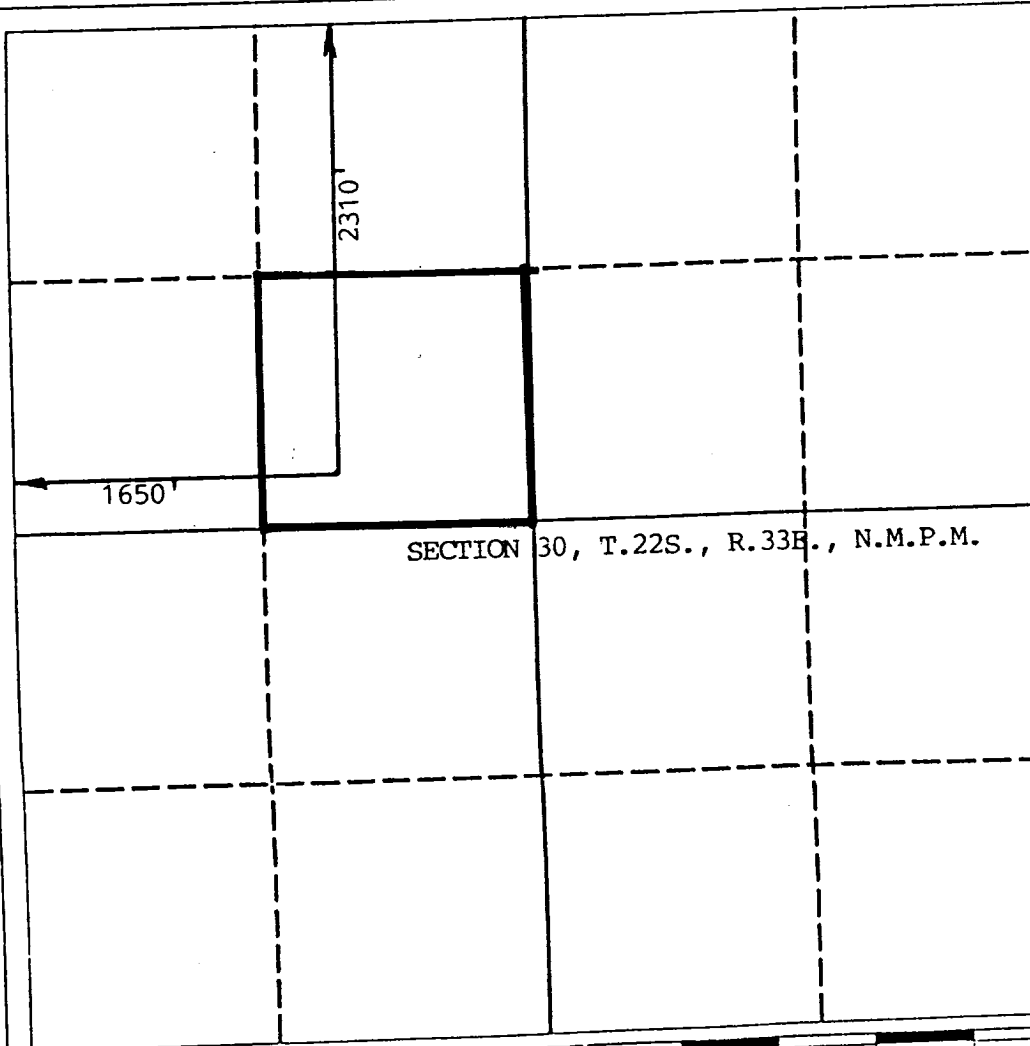
DISTRICT II
P.O. Drawer DD, Artesia, NM 88210

DISTRICT III
1000 Rio Brazos Rd., Aztec, NM 87410

WELL LOCATION AND ACREAGE DEDICATION PLAT
All Distances must be from the outer boundaries of the section

Operator MITCHELL ENERGY Corporation			Lease BIGHORN 30 STATE		Well No. #2
Unit Letter F	Section 30	Township 22S.	Range 33E.	County LEA	NMPM
Actual Footage Location of Well: 2310 feet from the NORTH line and 1650 feet from the WEST line					
Ground level Elev. 3730	Producing Formation Bone Spring		Pool East Red Tank (Bone Spring)		Dedicated Acreage: 40 Acres

1. Outline the acreage dedicated to the subject well by colored pencil or hatchure marks on the plat below.
2. If more than one lease is dedicated to the well, outline each and identify the ownership thereof (both as to working interest and royalty).
3. If more than one lease of different ownership is dedicated to the well, have the interest of all owners been consolidated by communitization, unitization, force-pooling, etc.?
☐ Yes ☐ No If answer is "yes" type of consolidation _____
If answer is "no" list the owners and tract descriptions which have actually been consolidated. (Use reverse side of this form if necessary).
No allowable will be assigned to the well until all interests have been consolidated (by communitization, unitization, forced-pooling, or otherwise) or until a non-standard unit, eliminating such interest, has been approved by the Division.



OPERATOR CERTIFICATION

I hereby certify that the information contained herein is true and complete to the best of my knowledge and belief.

Signature George Mullen
Printed Name George Mullen
Position Reg. Affairs Specialist
Company Mitchell Energy Corp.
Date April 22, 1993

SURVEYOR CERTIFICATION

I hereby certify that the well location shown on this plat was plotted from field notes of actual surveys made by me or under my supervision, and that the same is true and correct to the best of my knowledge and belief.

Date Surveyed 3/25/93
Signature & Seal of Professional Surveyor D. J. JACQUES
Certificate No. 6290
PROFESSIONAL ENGINEER

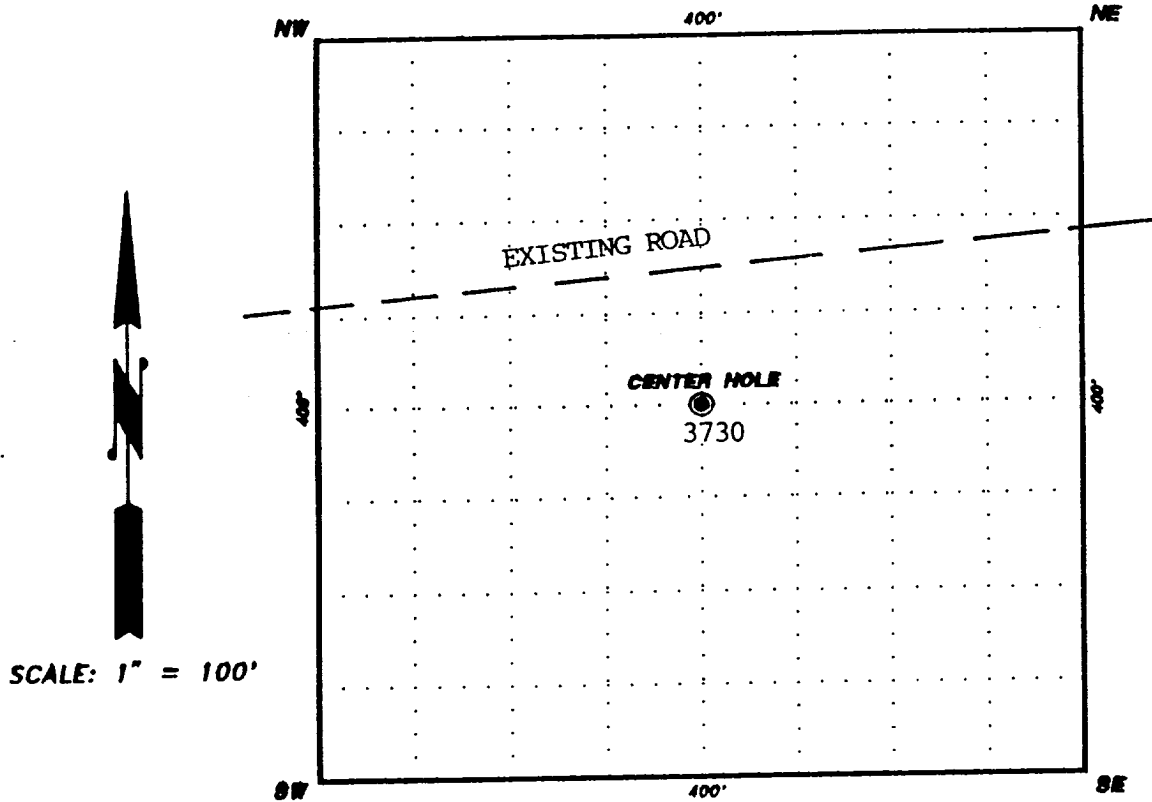
BIGHORN3

GRID ELEVATIONS

JOHN D. JAGLESS & ASSOCIATES

CONSULTING ENGINEERS

NO GRID STAKED DUE TO STATE LOCATION



WELL INFORMATION

BIGHORN 30 STATE #2
2310 FNL, 1650 FWL,
SECTION 30 T.22S., R.33E., N.M.P.M.

WRS COMPLETION REPORT

COMPLETIONS SEC 30 TWP 22S RGE 33E
PI# 30-T-0025 09/02/93 30-025-31959-0000 PAGE 1

NMEX LEA * 2310FNL 1650FWL SEC SE NW
STATE COUNTY FOOTAGE SPOT

MITCHELL ENERGY D DO

OPERATOR WELL CLASS INIT F.N

2 BIG HORN "30" STATE

WELL NO. LEASE NAME

3746KB 3730GR

RED TANK E

OPER ELEV

FIELD/POOL AREA

API 30-025-31959-0000

LEASE NO. PERMIT OR WELL I.D. NO.

07/08/1993 08/12/1993 ROTARY VERT OIL

SPUD DATE COMP DATE TYPE TOOL HOLE TYPE STATUS

10750 BONE SPG PETERSON DRLG 5 RIG SUB 14

PROJ. DEPTH PROJ. FORM CONTRACTOR

DTD 10490 PB 10371 FM/TD BONE SPG

DRILLERS T.D. LOG T.D. PLUG BACK TD OLD T.D. FORM T.D.

LOCATION DESCRIPTION

15 MI SE HALFWAY, NM

CASING/LINER DATA

CSG 20 @ 40
CSG 13 3/8 @ 500 W/ 600 SACKS
CSG 8 5/8 @ 4800 W/ 2150 SACKS
CSG 5 1/2 @ 10490 W/ 1050 SACKS

TUBING DATA

TBG 2 7/8 AT 9061

INITIAL POTENTIAL

IPP 183BOPD 263 MCFD 41BW 24HRS
BONE SPG PERF W/ 70/IT 8887- 8906 GROSS
PERF 8887- 8898 8900- 8906
ACID 8887- 8906 2000GALS
15% NEFE
SWFR 8887- 8906 24000GALS 81400LBS SAND
GTY 40.6 GOR 1437

ADDTVGELA

TYPE	FORMATION	LTH	TOP DEPTH/SUB	BSE DEPTH/SUB
LOG	SALT		1050 2696	4615 -869
LOG	DELWR SD		5000 -1254	
LOG	BONE SPG		8708 -4962	

CONTINUED IC# 300257014593

COPYRIGHT 1993

Petroleum Information Corporation

PI-WRS-GET
Form No.187

COMPLETIONS
PI# 30-T-0025 09/02/93 SEC 30 TWP 22S RGE 33E
30-025-31959-0000 PAGE 2

MITCHELL ENERGY
2 BIG HORN "30" STATE D DO

TYPE FORMATION LTH TOP DEPTH/SUB BSE DEPTH/SUB
SUBSEA MEASUREMENTS FROM KB

CORES

NO DETAILS

SDWL

LOGS AND SURVEYS /INTERVAL, TYPE/

LOGS
LOGS
LOGS

GR
CNL
CBL

AID
LDT

SONL
CCL

DRILLING PROGRESS DETAILS

MITCHELL ENERGY
400 W ILLINOIS
STE 1000
MIDLAND, TX 79701
915-682-5396
04/26 LOC/1993/
07/08 DRLG 90
07/12 DRLG 3570
07/14 DRLG 4525
07/19 DRLG 7250
07/21 DRLG 8290
08/03 10490 TD, WOCT
08/31 RIG REL 07/30/93
10490 TD, PB 10371
COMP 8/12/93, IPP 183 BO, 263 MCFG, 41
BWP, GOR 1437, GTY 40.6
PROD ZONE - BONE SPRING 8887-8906
CUT SDWL CORES, NO DSTS RPTD