

**DISTRICT I**  
 P. O. Box 1980  
 Hobbs, NM 88240

**OIL CONSERVATION DIVISION**  
 P. O. Box 2088  
 Santa Fe, New Mexico 87504-2088

**DISTRICT II**  
 P. O. Drawer DD  
 Artesia, NM 88210

**DISTRICT III**  
 1000 Rio Brazos Rd  
 Aztec, NM 87410

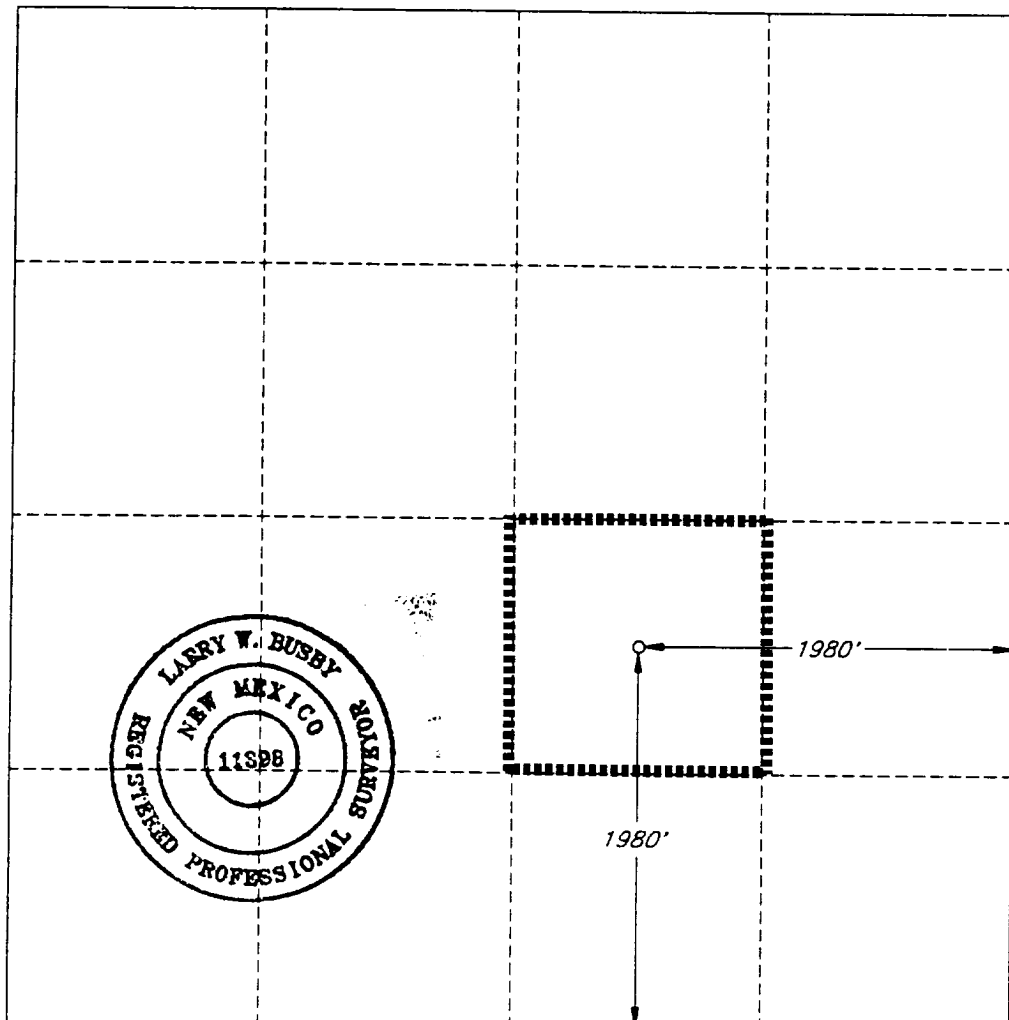
**WELL LOCATION AND ACREAGE DEDICATION PLAT**

All distances must be from the outer boundaries of the section.

Operator <b>SANTA FE ENERGY OPER. PART, L.P.</b>			Lease <b>WHITE SWAN '9' FEDERAL</b>		Well No. <b>3</b>
Unit Letter <b>J</b>	Section <b>9</b>	Township <b>22 SOUTH</b>	Range <b>32 EAST, N.M.P.M.</b>	County <b>LEA</b>	
Actual Footage Location of Well					
<b>1980</b> feet from the <b>SOUTH</b> line and		<b>1980</b> feet from the <b>EAST</b> line			
Ground Level Elev. <b>3809'</b>	Producing Formation <b>Delaware</b>	Pool <b>Livinstson Ridge, E. (Delaware)</b>	Acres <b>40</b>		

- Outline the acreage dedicated to the subject well by colored pencil or hachure marks on the plat below.
- If more than one lease is dedicated to the well, outline each and identify the ownership thereof (both as to working interest and royalty).
- If more than one lease of different ownership is dedicated to the well, have the interest of all the owners been consolidated by communitization, unitization, forced-pooling, etc.?
  - Yes  No If answer is "yes", type of consolidation \_\_\_\_\_
  - If the answer is "no", list the owners and tract descriptions which have actually been consolidated. (Use the reverse side of this form if necessary.) \_\_\_\_\_

No allowable will be assigned to the well until all interests have been consolidated (by communitization, unitization, forced-pooling, or otherwise) or until a non-standard unit, eliminating such interest, has been approved by the division.



**OPERATOR CERTIFICATION**

*I hereby certify that the information herein is true and complete to the best of my knowledge and belief.*

Signature  
*Darrell Roberts*  
 Printed Name  
 Darrell Roberts  
 Position  
 Division Drilling Engineer  
 Company  
 Santa Fe Energy Operating Partners, LP  
 Date  
 November 9, 1994

**SURVEYOR CERTIFICATION**

*I hereby certify that the well location shown on this plat was plotted from field notes of actual surveys made by me or under my supervision, and that the same is true and correct to the best of my knowledge and belief.*

Date Surveyed  
 JUNE 17, 1993  
 Signature and Seal of Professional Surveyor  
*Larry W. Busby*  
 Certificate No.  
**LARRY W. BUSBY R.P.S. #11398**  
 JOB NO. 96997 V.H.B.

