

Submit to Appropriate District Office
 State Lease - 4 copies
 Fee Lease - 3 copies

State of New Mexico
 Energy, Minerals and Natural Resources Department

Form C-102
 Revised 1-1-89

OIL CONSERVATION DIVISION

P.O. Box 2088
 Santa Fe, New Mexico 87504-2088

DISTRICT I
 P.O. Box 1980, Hobbs, NM 88240

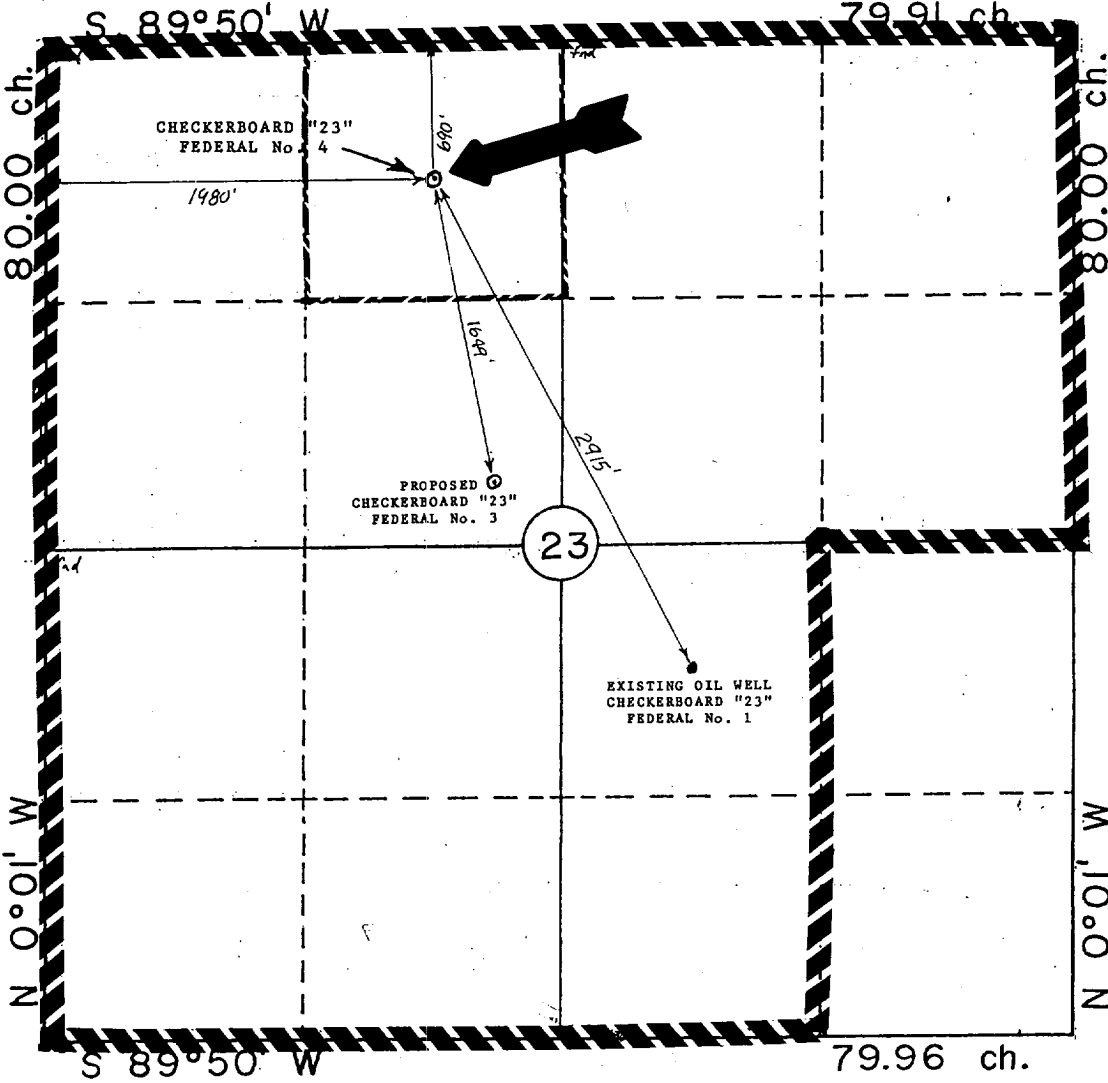
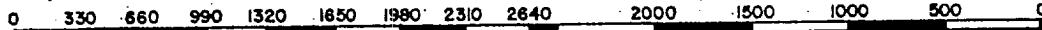
DISTRICT II
 P.O. Drawer DD, Artesia, NM 88210

DISTRICT III
 1000 Rio Brazos Rd., Aztec, NM 87410

WELL LOCATION AND ACREAGE DEDICATION PLAT

All Distances must be from the outer boundaries of the section

Operator MERIDIAN OIL INC.		Lease CHECKERBOARD "23" FEDERAL		Well No. 4
Unit Letter C	Section 23	Township 22 SOUTH	Range 32 EAST,	County LEA
Actual Footage Location of Well: 690 feet from the NORTH line and 1980 feet from the WEST line				
Ground level Elev. 3749	Producing Formation BONE SPRING	Pool RED TANK BONE SPRING	Dedicated Acreage: 40 Acres	
<p>1. Outline the acreage dedicated to the subject well by colored pencil or hatchure marks on the plat below.</p> <p>2. If more than one lease is dedicated to the well, outline each and identify the ownership thereof (both as to working interest and royalty).</p> <p>3. If more than one lease of different ownership is dedicated to the well, have the interest of all owners been consolidated by communitization, unitization, force-pooling, etc.? <input type="checkbox"/> Yes <input type="checkbox"/> No If answer is "yes" type of consolidation _____</p> <p>If answer is "no" list the owners and tract descriptions which have actually been consolidated. (Use reverse side of this form if necessary.) _____</p> <p>No allowable will be assigned to the well until all interests have been consolidated (by communitization, unitization, forced-pooling, or otherwise) or until a non-standard unit, eliminating such interest, has been approved by the Division.</p>				



OPERATOR CERTIFICATION

I hereby certify that the information contained herein is true and complete to the best of my knowledge and belief.

Signature: *Donna Williams*

Printed Name: **Donna Williams**

Position: **Production Assistant**

Company: **Meridian Oil Inc.**

Date: **1/13/94**

SURVEYOR CERTIFICATION

I hereby certify that the well location shown on this plat was plotted from field notes of actual surveys made by me or under my supervision, and that the same is true and correct to the best of my knowledge and belief.

Date Surveyed: **1-5-94**

Signature: **WILLIAM E. MAHNKE II**

Professional Land Surveyor Seal: **WILLIAM E. MAHNKE II, NEW MEXICO, #8466**

Certificate No.: **8466**

REVISED 1-7-94:
 MOVED LOCATION 300' NORTH
 ADJUSTED ALIGNMENT AND STATIONING
 OF FLOW LINE, POWER LINE, AND ROAD